

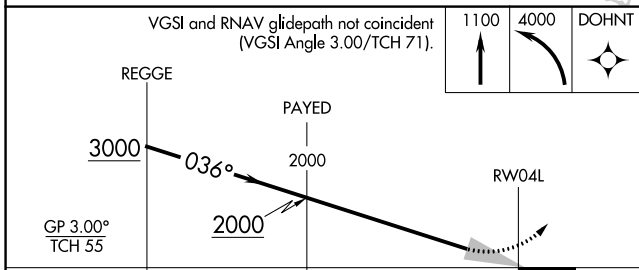
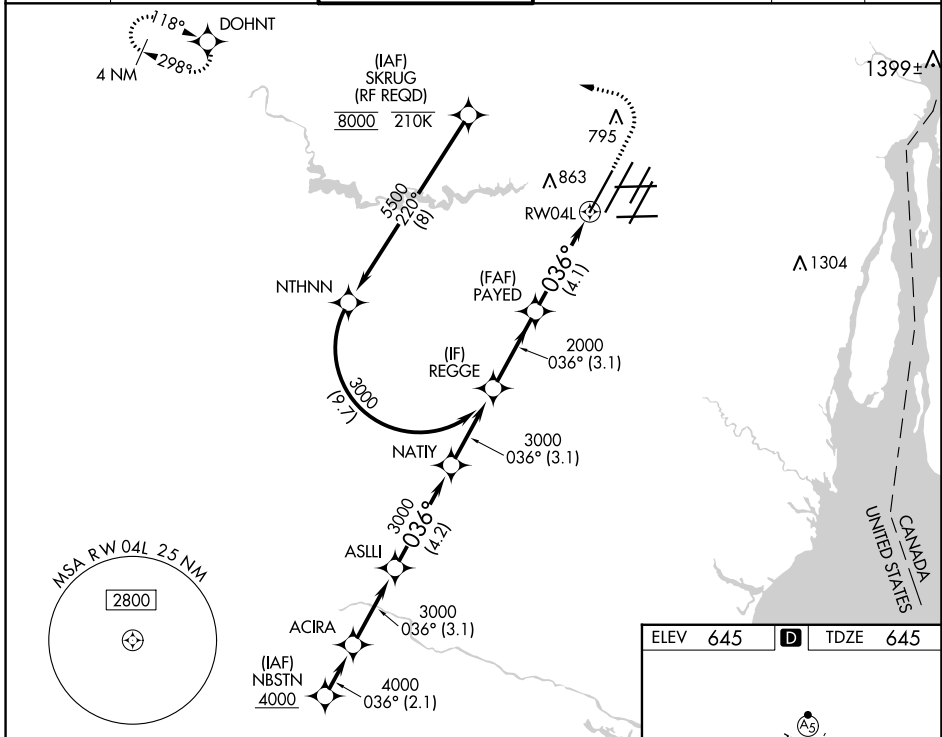
APP CRS 036°	Rwy Idg 10000
	TDZE 645
	Apt Elev 645

RNAV (RNP) W RWY 4L

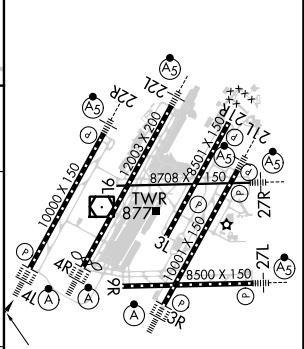
DETROIT METRO WAYNE COUNTY (DTW)

RNP AR APCH.	<p>Simultaneous approach authorized. For uncompensated Baro-VNAV systems, procedure NA below -19°C or above 54°C. For inop ALS, increase RNP 0.30 all Cats visibility to RVR 6000.</p>	<p>ALSF-2</p>	<p>MISSED APPROACH: Climb to 1100 then climbing left turn to 4000 direct DOHNT and hold, continue climb-in-hold to 4000.</p>
--------------	--	---------------	--

D-ATIS 133.675	DETROIT APP CON 124.05 284.0	METRO TOWER 135.0 317.725	GND CON 121.8 (NW) 119.45 (NE) 132.725 (SW) 119.25 (SE)	CLNC DEL 120.65	CPDLC
--------------------------	--	-------------------------------------	---	---------------------------	-------



ELEV 645	D	TDZE 645
----------	----------	----------



CATEGORY	A	B	C	D
RNP 0.15 DA		970/26	325 (400-½)	
RNP 0.30 DA		1058/40	413 (500-¾)	

AUTHORIZATION REQUIRED

TDZ/CL Rwys 3R, 4L, 4R and 22R
REL Rwys 3L, 9L, 9R and 21R
HIRL all runways

EC-1, 31 OCT 2024 to 28 NOV 2024

EC-1, 31 OCT 2024 to 28 NOV 2024