

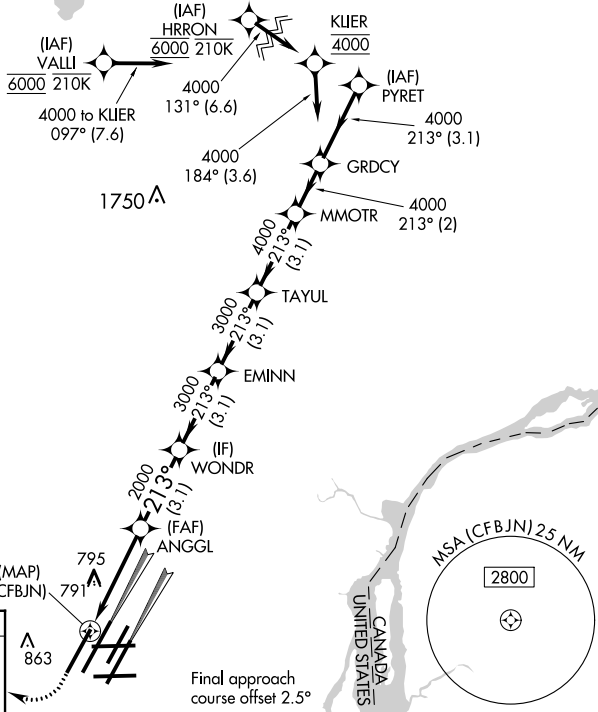
WAAS CH 42939 W22B	APP CRS 213°	Rwy Idg TDZE Apt Elev	10000 642 645
--	------------------------	-----------------------------	--

RNAV (GPS) Y RWY 22R

DETROIT METRO WAYNE COUNTY (DTW)

<p>▼ For uncompensated Baro-VNAV systems, LNAV/VNAV NA below -19°C (-2°F) or above 54°C (130°F). DME/DME RNP-0.3 NA. Simultaneous approach authorized. LNAV procedure NA during simultaneous operations. Use of FD or AP providing RNAV track guidance required during simultaneous operations.</p>		<p>MALS R</p>	<p>MISSED APPROACH: Climb to 1100 then climbing right turn to 4000 direct DOHNT and hold.</p>		
D-ATIS 133.675	DETROIT APP CON 124.05 284.0	METRO TOWER 135.0 317.725	GND CON 121.8 (NW) 119.45 (NE) 132.725 (SW) 119.25 (SE)	CLNC DEL 120.65	CPDLC

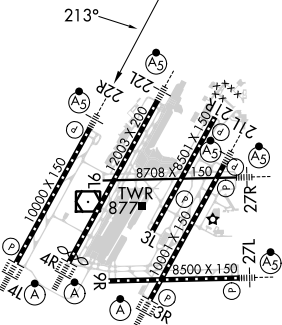
RADAR REQUIRED



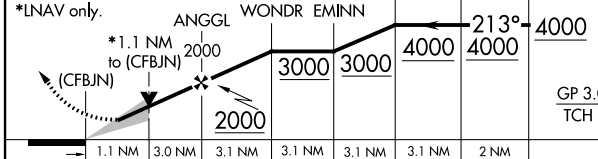
MISSED APCH FIX



ELEV 645	D	TDZE 642
-----------------	----------	-----------------



1100	4000	DOHNT	VGSI and RNAV glidepath not coincident (VGSI Angle 3.00/TCH 71).
------	------	-------	--



CATEGORY	A	B	C	D
LPV DA	892/24		250 (300-½)	
LNAV/VNAV DA	1050/45		408 (500-¾)	
LNAV MDA	1060/24	418 (500-½)	1060/40	418 (500-¾)
C CIRCLING	1180-1	535 (600-1)	1180-1½	1240-2
			535 (600-½)	595 (600-2)