

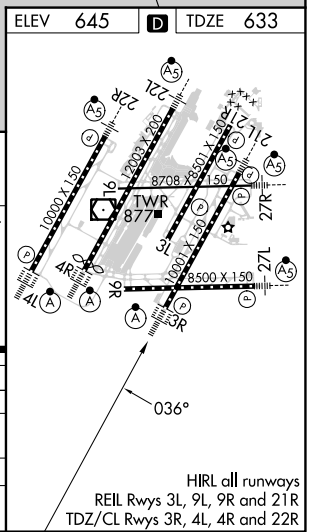
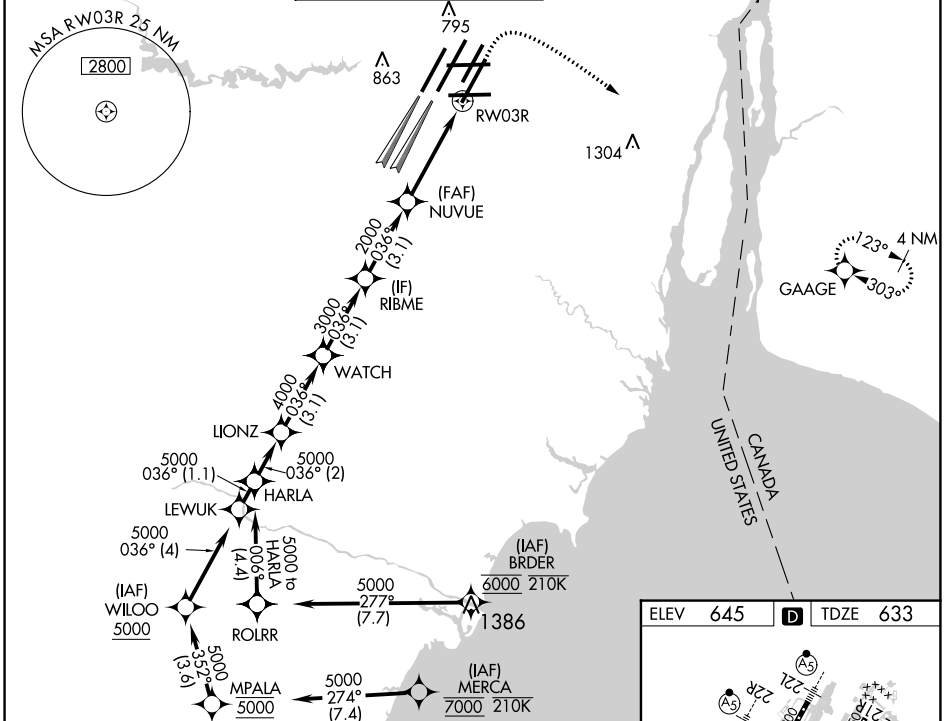
| | | |
|--|------------------------|--|
| WAAS CH 61304 W03A | APP CRS 036° | Rwy Idg 10001 TDZE 633 Apt Elev 645 |
|--|------------------------|--|

RNAV (GPS) Z RWY 3R

DETROIT METRO WAYNE COUNTY (DTW)

| | | |
|---|------------|--|
| RNP APCH. ▼ For uncompensated Baro-VNAV systems, LNAV/VNAV NA below -19°C (-2°F) or above 54°C (130°F). Simultaneous approach authorized. LNAV procedure NA during simultaneous operations. Use of FD or AP required during simultaneous operations. | ALSF-2 | MISSED APPROACH: Climb to 1100 then climbing right turn to 4000 direct GAAGE and hold, continue climb-in-hold to 4000. |
|---|------------|--|

| | | | | | |
|--------------------------|--|-------------------------------------|---|---------------------------|-------|
| D-ATIS 133.675 | DETROIT APP CON 125.15 284.0 | METRO TOWER 118.4 317.725 | GND CON 121.8 (NW) 119.45 (NE) 132.725 (SW) 119.25 (SE) | CLNC DEL 120.65 | CPDLC |
|--------------------------|--|-------------------------------------|---|---------------------------|-------|



VGSI and RNAV glidepath not coincident (VGSI Angle 3.00/TCH 70).

| | | | | | |
|--------------------|---------|-------------|--------------|-------------|--------|
| HARLA | LIONZ | WATCH | RIBME | NUVUE | GAAGE |
| 5000-036° | 5000 | 4000 | 3000 | 2000 | 1100 |
| GP 3.00° TCH 54 | 2 NM | 3.1 NM | 3.1 NM | 3.1 NM | 2.9 NM |
| CATEGORY | A | B | C | D | |
| LPV DA | 833/18 | | 200 (200-½) | | |
| LNAV/VNAV DA | 1013/35 | | 380 (400-¾) | | |
| LNAV MDA | 1080/24 | 447 (500-½) | 1080/45 | 447 (500-¾) | |
| CIRCLING | 1180-1 | 535 (600-1) | 1180-1½ | 1240-2 | |
| | | | 535 (600-1½) | 595 (600-2) | |

*INAV only.
*1.2 NM to RW03R

EC-1, 31 OCT 2024 to 28 NOV 2024

EC-1, 31 OCT 2024 to 28 NOV 2024