

WAAS CH <b>49118</b> <b>W18A</b>	APP CRS <b>183°</b>	Rwy Idg TDZE Apt Elev	<b>5000</b> <b>393</b> <b>401</b>
--	------------------------	-----------------------------	---

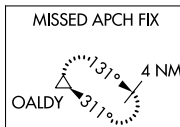
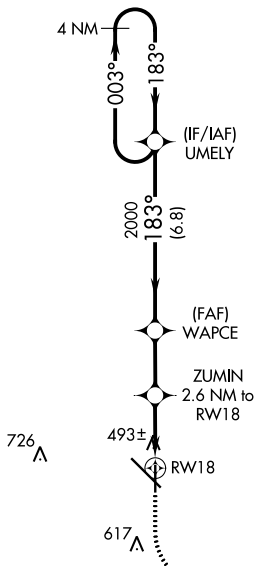
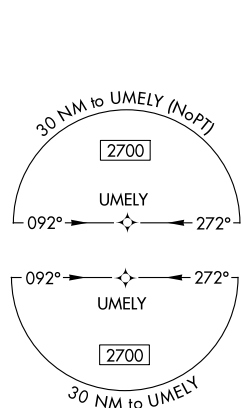
# RNAV (GPS) RWY 18

DOTHAN RGNL (DHN)

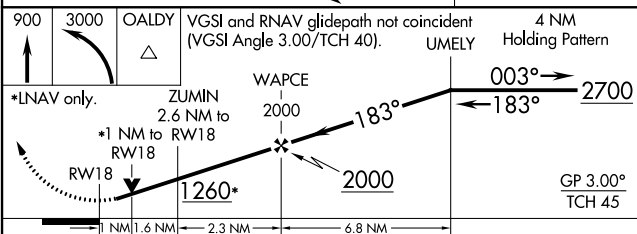
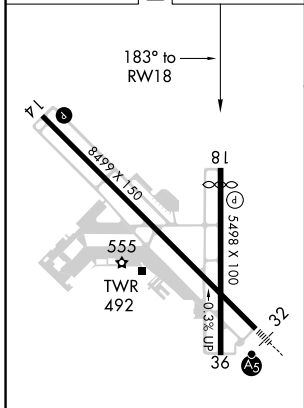
▼ For uncompensated Baro-VNAV systems, LNAV/VNAV NA below -1.5°C (5°F) or above 41°C (105°F). DME/DME RNP-0.3 NA. Visibility reduction by helicopters NA.

MISSED APPROACH: Climb to 900 then climbing left turn to 3000 direct OALDY and hold.

ATIS <b>135.725</b>	CAIRNS APP CON * <b>125.4 327.125</b>	DOTHAN TOWER * <b>118.4 (CTAF) 0 257.6</b>	GND CON <b>121.7 348.6</b>	UNICOM <b>122.95</b>
------------------------	--	---	-------------------------------	-------------------------



ELEV 401	<b>D</b>	TDZE 393
----------	----------	----------



CATEGORY	A	B	C	D
LPV DA		643- <sup>3</sup> / <sub>4</sub>	250 (300- <sup>3</sup> / <sub>4</sub> )	
LNAV/VNAV DA		674- <sup>7</sup> / <sub>8</sub>	281 (300- <sup>7</sup> / <sub>8</sub> )	
LNAV MDA		760-1	367 (400-1)	
<b>C</b> CIRCLING	860-1	459 (500-1)	920-1 <sup>1</sup> / <sub>2</sub> 519 (600-1 <sup>1</sup> / <sub>2</sub> )	1040-2 639 (700-2)

REIL Rwy 18  
REIL Rwy 14  
HIRL Rwy 18-36  
HIRL Rwy 14-32

SE-4, 31 OCT 2024 to 28 NOV 2024

SE-4, 31 OCT 2024 to 28 NOV 2024