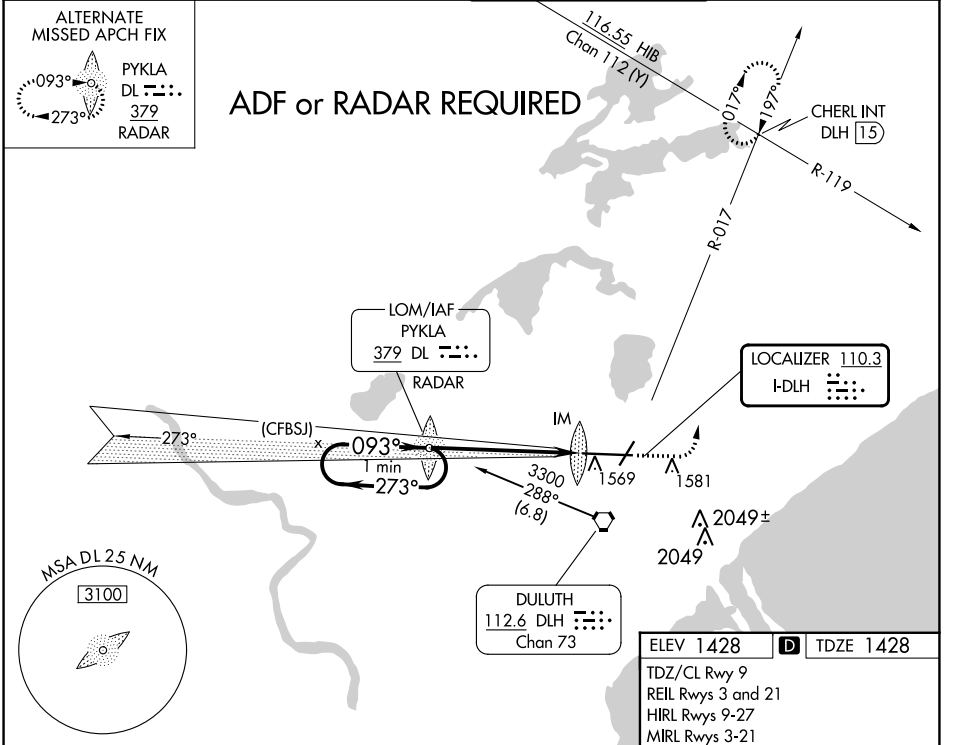


LOC I-DLH 110.3	APP CRS 093°	Rwy Idg 10062 TDZE 1428 Apt Elev 1428
---------------------------	------------------------	--

ILS RWY 9 (CAT II)

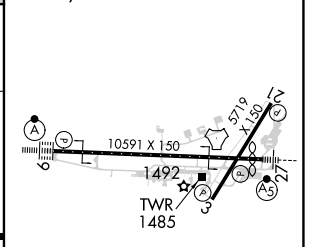
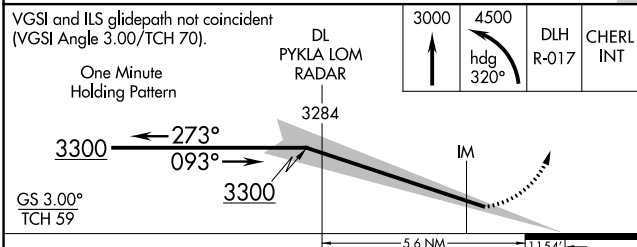
DULUTH INTL (DLH)

ASR ADF or RADAR required.	ATIS 124.1 270.1	DULUTH APP CON 125.45 233.7	DULUTH TOWER 118.3 257.8	GND CON 121.9 348.6
	MISSED APPROACH: Climb to 3000 then climbing left turn to 4500 on heading 320° and on DLH VORTAC R-017 to CHERL INT/DLH 15 DME and hold.			



NC-1, 31 OCT 2024 to 28 NOV 2024

NC-1, 31 OCT 2024 to 28 NOV 2024



CATEGORY	A	B	C	D
S-ILS 9	RA 101/12 100 DA 1528			

CATEGORY II ILS - SPECIAL AIRCREW & AIRCRAFT CERTIFICATION REQUIRED