

NEVUE THREE DEPARTURE(RNAV)
(NEVUE3.NEVUE) 21JUL16

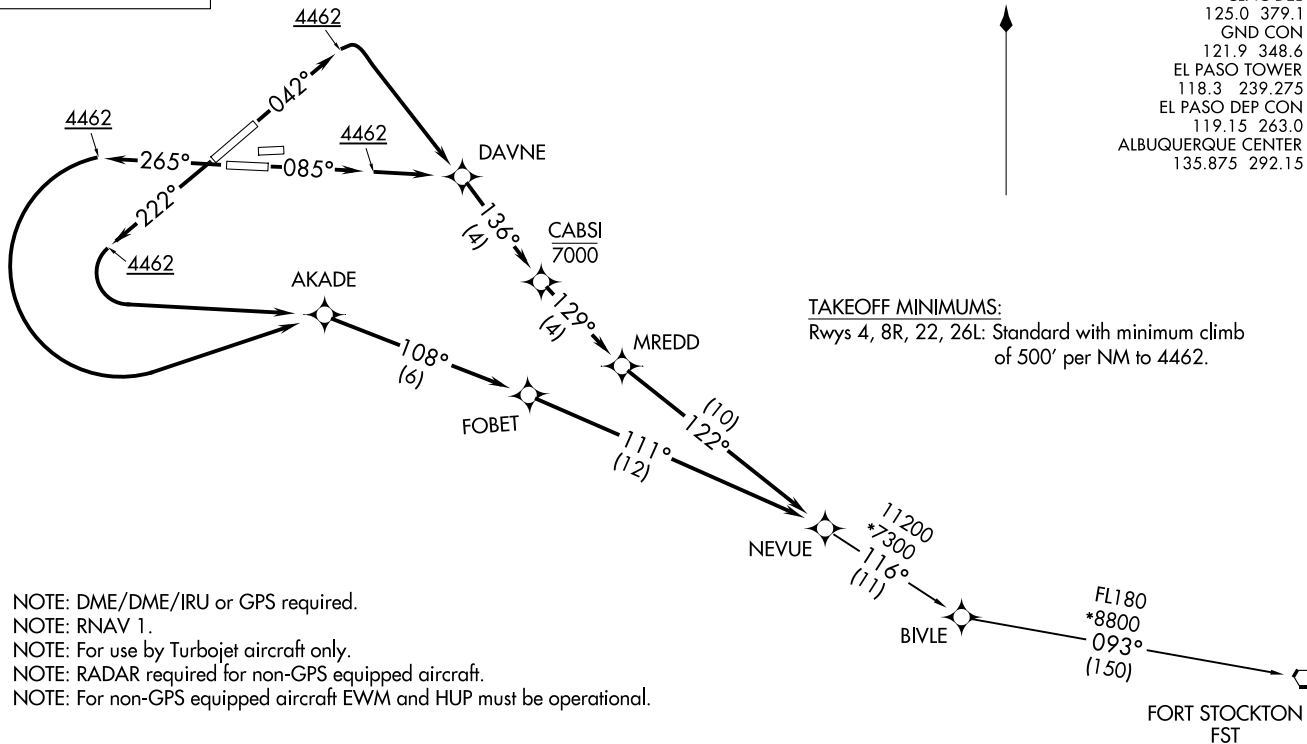
(NEVUE3.NEVUE) 1803Z
NEVUE THREE DEPARTURE(RNAV)

AL-134 (FAA)

EL PASO INTL (EILP)
EL PASO, TEXAS

TOP ALTITUDE:
Assigned by ATC

| | | |
|--------------------|---------|---------|
| D-ATIS | 120.0 | 254.3 |
| CLNC DEL | 125.0 | 379.1 |
| GND CON | 121.9 | 348.6 |
| EL PASO TOWER | 118.3 | 239.275 |
| EL PASO DEP CON | 119.15 | 263.0 |
| ALBUQUERQUE CENTER | 135.875 | 292.15 |



- NOTE: DME/DME/IRU or GPS required.
- NOTE: RNAV 1.
- NOTE: For use by Turbojet aircraft only.
- NOTE: RADAR required for non-GPS equipped aircraft.
- NOTE: For non-GPS equipped aircraft EWM and HUP must be operational.

NOTE: Chart not to scale.

(NARRATIVE ON FOLLOWING PAGE)

EL PASO, TEXAS
EL PASO INTL (EILP)

NEVUE THREE DEPARTURE (RNAV)



DEPARTURE ROUTE DESCRIPTION

TAKEOFF RWY 4: Climb heading 042° to 4462, then right turn direct DAVNE, then on track 136° to cross CABSI at or below 7000, then on track 129° to MREDD, then on track 122° to NEUVE. Thence. . . .

TAKEOFF RWY 8R: Climb heading 085° to 4462, then direct DAVNE, then on track 136° to cross CABSI at or below 7000, then on track 129° to MREDD, then on track 122° to NEUVE. Thence. . . .

TAKEOFF RWY 22: Climb heading 222° to 4462, then left turn direct AKADE, then on track 108° to FOBET, then on track 111° to NEVUE. Thence. . . .

TAKEOFF RWY 26L: Climb heading 265° to 4462, then left turn direct AKADE, then on track 108° to FOBET, then on track 111° to NEVUE. Thence. . . .

. . . .on depicted route to FST VORTAC.

FT STOCKTON TRANSITION (NEVUE3.FST)

SC-3, 31 OCT 2024 to 28 NOV 2024

SC-3, 31 OCT 2024 to 28 NOV 2024