

APP CRS	Rwy Idg	9025
085°	TDZE	3940
	Apt Elev	3962

RNAV (RNP) Y RWY 8R

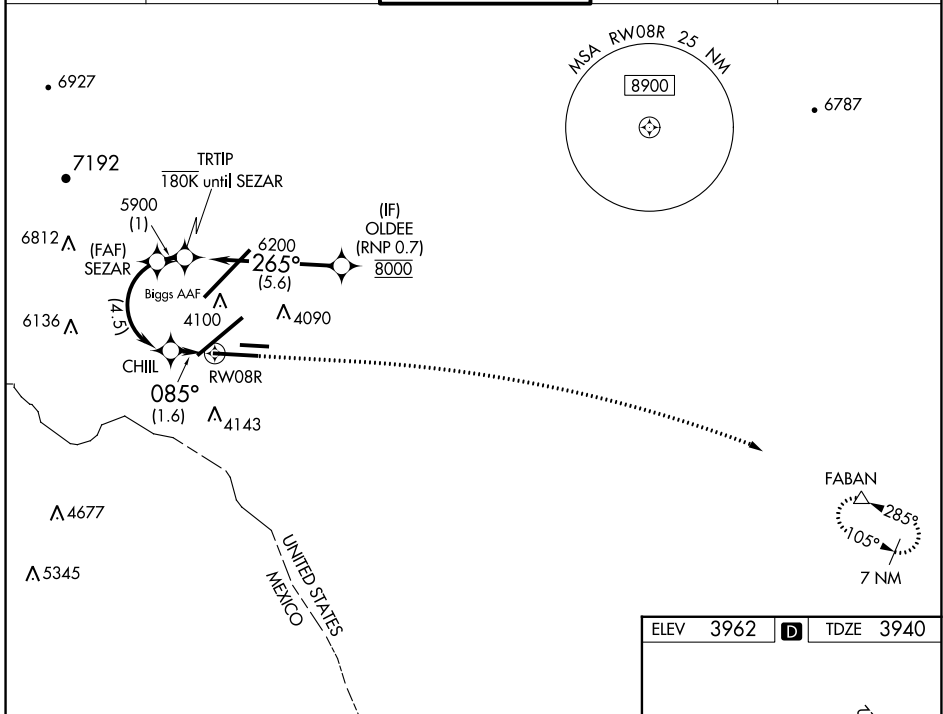
EL PASO INTL (ELP)

RNP AR APCH.
RF required.

T For uncompensated Baro-VNAV systems, procedure NA below -5°C or above 54°C.

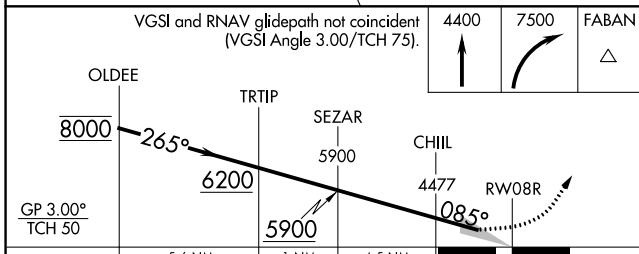
MISSED APPROACH: Climb to 4400 then climbing right turn to 7500 direct FABAN and hold.

D-ATIS 120.0 254.3	EL PASO APP CON 124.25 298.85	EL PASO TOWER 118.3 239.275	GND CON 121.9 348.6	CLNC DEL 125.0 379.1
------------------------------	---	---------------------------------------	-------------------------------	--------------------------------

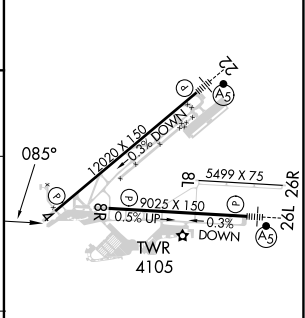


SC-3, 31 OCT 2024 to 28 NOV 2024

SC-3, 31 OCT 2024 to 28 NOV 2024



ELEV 3962	D	TDZE 3940
-----------	----------	-----------



	5.6 NM	1 NM	4.5 NM	1.6 NM
CATEGORY	A	B	C	D
RNP 0.20 DA	4193- ³ / ₄		253 (300- ³ / ₄)	
RNP 0.30 DA	4234- ⁷ / ₈		294 (300- ⁷ / ₈)	
AUTHORIZATION REQUIRED				

MIRL Rwy 8L-26R
HIRL Rwy 4-22 and 8R-26L
REIL Rwy 4 and 8R