

# RNAV (GPS) RWY 35C

WAAAS Chan <b>84880</b> <b>W35A</b>	APCH CRS <b>355°</b>	Rwy Idg <b>9217</b> TDZE <b>1293</b> Arprt Elev <b>1307</b>
---	-------------------------	---

AL-135 [USAF]

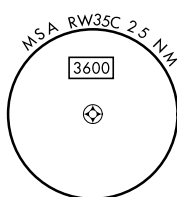
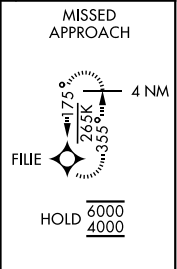
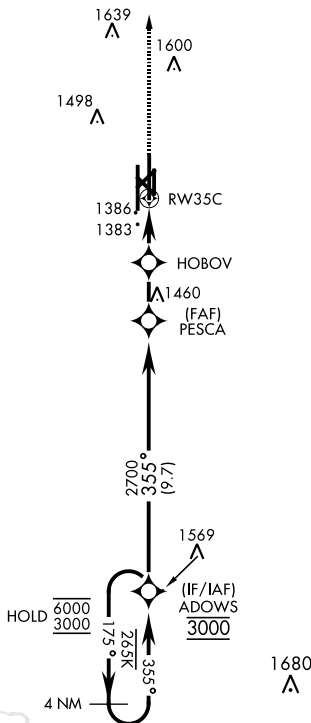
VANCE AFB (KEND)

RNP APCH	SALSF <b>(A2)</b>	MISSED APPROACH: Climb to 4000 direct FILE and hold.
----------	----------------------	--

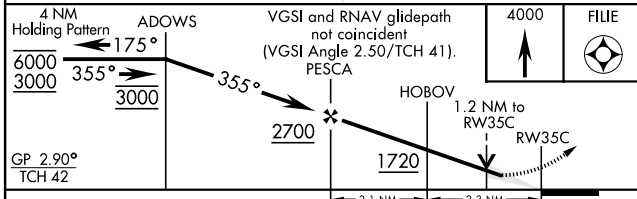
\* When ALS inop, increase RVR to 45, vis to 7/8 miles.  
 \*\* When ALS inop, increase RVR to 55, vis to 1 mile.  
 \*\*\* Circling visibility reduction by helicopters NA.

ATIS ★ <b>115.4 263.15</b>	APP CON <b>125.45 388.2</b> (E) <b>126.75 346.325</b> (W)	TOWER ★ <b>124.05 259.1</b>	GND CON <b>121.675 289.4</b>	CLNC DEL <b>225.4</b>
-------------------------------	---	--------------------------------	---------------------------------	--------------------------

1467  
 For uncompensated Baro-VNAV systems,  
 LNAV/VNAV NA below -17°C at  
 or above 54°C.

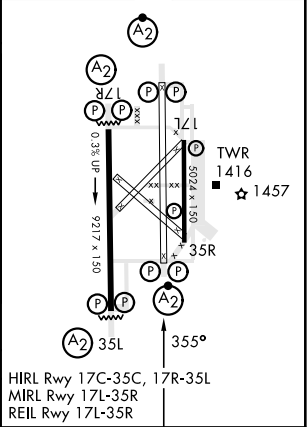


EMERG SAFE ALT 100 NM 4500



ELEV 1307	TDZE 1293
-----------	-----------

CATEGORY	A	B	C	D	E
LPV DA	1543/40		250	(300-34)	
LNAV/VNAV DA *	1568/40	275	(300-34)		1581/40 288 (300-34)
LNAV MDA **	1660/40		367	(400-34)	
*** CIRCLING	1760-1 453 (500-1)	1800-1 1/2 493 (500-1 1/2)	1900-2 593 (600-2)	2300-3 993 (1000-3)	



# RNAV (GPS) RWY 35C

SC-1, 31 OCT 2024 to 28 NOV 2024

SC-1, 31 OCT 2024 to 28 NOV 2024