

ENID, OKLAHOMA

RNAV (GPS) RWY 35R

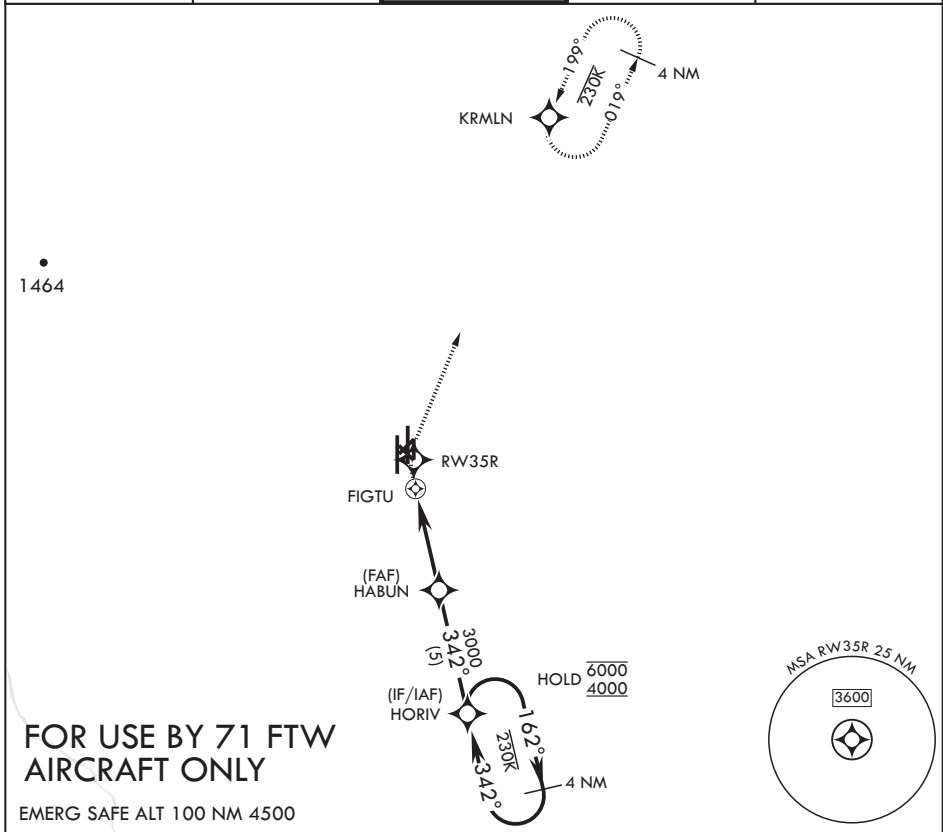
APCH CRS	Rwy Idg	5024
342°	TDZE	1284
	Arprt Elev	1307

AL-135 (USAF)

VANCE AFB (KEND)

RNP APCH	MISSED APPROACH: Climb to 1900 then climbing right turn to 4000 direct KRMLN and hold.

ATIS* 115.4 263.15	APP CON 125.45 388.2 (E) 126.75 346.325 (W)	TOWER* 124.05 259.1	GND CON 121.675 289.4	CLNC DEL 225.4
-----------------------	---	------------------------	--------------------------	-------------------



FOR USE BY 71 FTW AIRCRAFT ONLY

EMERG SAFE ALT 100 NM 4500

 1900 4000 KRMLN					ELEV 1307	TDZE 1284
CATEGORY	A	B	C	D		
LNAV MDA	1720-1%	436 (500-1%)	NA	NA	HIRL Rwy 17C-35C, 17R-35L MIRL Rwy 17L-35R REIL Rwy 17L, 35R	
CIRCLING	1760-1%	453 (500-1%)	NA	NA		

ENID, OKLAHOMA

36°20'N - 97°55'W

VANCE AFB (KEND)

Orig 24MAR22
TERPS

RNAV (GPS) RWY 35R

SC-1, 31 OCT 2024 to 28 NOV 2024

SC-1, 31 OCT 2024 to 28 NOV 2024