

RNAV (GPS) Y RWY 17R

APCH CRS	Rwy ldg	9217
163°	TDZE	1287
	Arpt Elev	1307

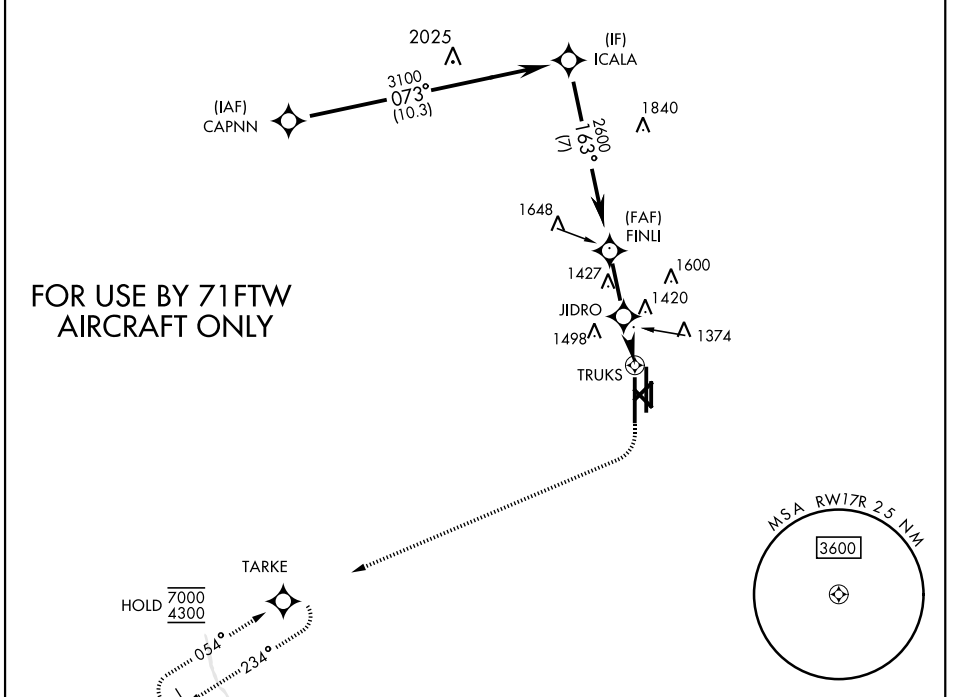
AL-135 [USAF]

VANCE AFB (KEND)

RNP APCH	SALS
RADAR required	(A2)
* When ALS inop, increase vis to 1 mile. Circling visibility reduction by helicopters not authorized.	

MISSED APPROACH: Climb to 1900, then climbing right turn to 4300 direct TARKE and hold.

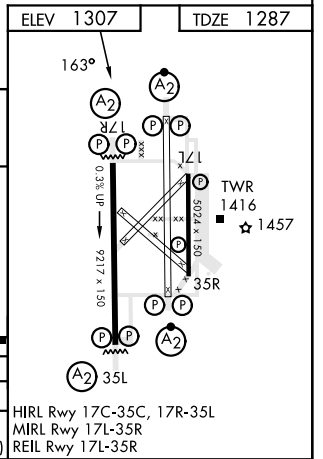
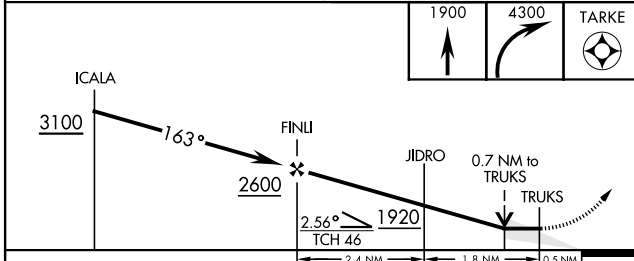
ATIS ★	APP CON	TOWER ★	GND CON	CLNC DEL
115.4 263.15	125.45 388.2 (E) 126.75 346.325 (W)	124.05 259.1	121.675 289.4	225.4



SC-1, 31 OCT 2024 to 28 NOV 2024

SC-1, 31 OCT 2024 to 28 NOV 2024

ELEV 1307	TDZE 1287
-----------	-----------



CATEGORY	A	B	C	D	E
LNAV MDA*	1640-3/4 353 (400-3/4)				
CIRCLING	1760-1 453 (500-1)	1800-1 1/2 493 (500-1 1/2)	1900-2 593 (600-2)	2300-3 993 (1000-3)	

HIRL Rwy 17C-35C, 17R-35L
MIRL Rwy 17L-35R
REIL Rwy 17L-35R

RNAV (GPS) Y RWY 17R