

ENID, OKLAHOMA

# VOR/DME RWY 35R

VORTAC END <b>115.4</b> Chan <b>101</b>	APCH CRS <b>342°</b>	Rwy Idg TDZE Arpt Elev <b>5024</b> <b>1284</b> <b>1307</b>
---	-------------------------	---

AL-135 [USAF]

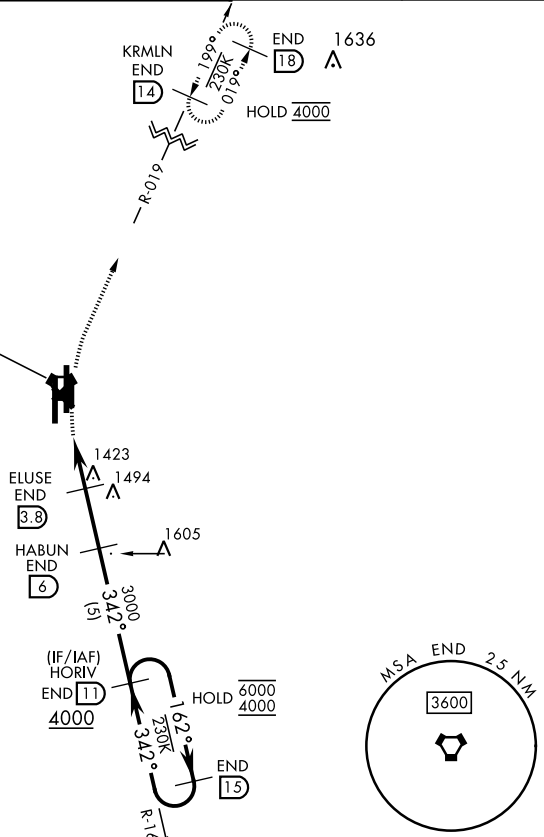
VANCE AFB (KEND)

<p>▼ Visibility reduction by helicopters NA.</p>	<p>MISSED APPROACH: Climbing right turn to 4000 on heading 005°, intercept END VORTAC R-019 to KRMLN and hold.</p>
--	--

<p>ATIS ★ <b>115.4 263.15</b></p>	<p>APP CON <b>125.45 388.2 EAST</b> <b>126.75 346.325 WEST</b></p>	<p>TOWER ★ <b>124.05 259.1</b></p>	<p>GND CON <b>121.675 289.4</b></p>	<p>CLNC DEL <b>225.4</b></p>
---------------------------------------	--	--	---	----------------------------------

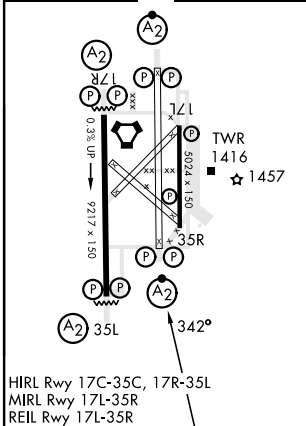
## FOR USE BY 71 FTW ACFT ONLY

VANCE  
115.4 END ≡:.  
Chan 101



EMERG SAFE ALT 100 NM 4500

ELEV 1307	TDZE 1284
-----------	-----------



HIRL Rwy 17C-35C, 17R-35L  
MIRL Rwy 17L-35R  
REIL Rwy 17L-35R

<p>4000 hdg 005°</p>	<p>END R-019</p>	<p>KRMLN END (14)</p>	<p>VGSI and descent angles not coincident (VGSI Angle 3.00/TCH 50).</p>	
<p>VORTAC</p>	<p>FIGTU (1.9)</p>	<p>ELUSE (3.8) TCH 40</p>	<p>HABUN (6) HORIV (11) END (15)</p>	
<p>1.1</p>	<p>1.9 NM</p>	<p>2.2 NM</p>	<p>3000, 4000, 6000 altitudes and 342°, 162° headings.</p>	
CATEGORY	A	B	C	D
S-35R	1720-1 $\frac{3}{8}$	436 (500-1 $\frac{3}{8}$ )	NA	
<b>C</b> CIRCLING	1760-1 $\frac{3}{8}$	453 (500-1 $\frac{3}{8}$ )	NA	

ENID, OKLAHOMA

36°20'N-97°55'W

VANCE AFB (KEND)

Orig 24MAR22

# VOR/DME RWY 35R

SC-1, 31 OCT 2024 to 28 NOV 2024

SC-1, 31 OCT 2024 to 28 NOV 2024