

WAAS CH <b>50213</b> <b>W17A</b>	APP CRS <b>175°</b>	Rwy Idg <b>8002</b> TDZE <b>1165</b> Apt Elev <b>1167</b>
----------------------------------------	------------------------	-----------------------------------------------------------------

# RNAV (GPS) RWY 17

ENID WOODRING RGNL (WDG)

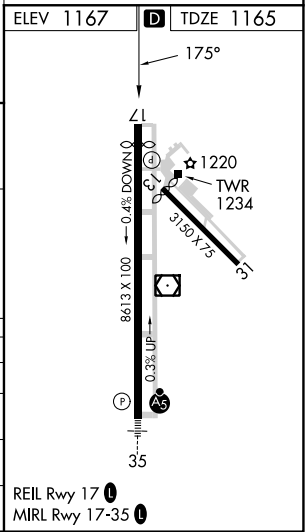
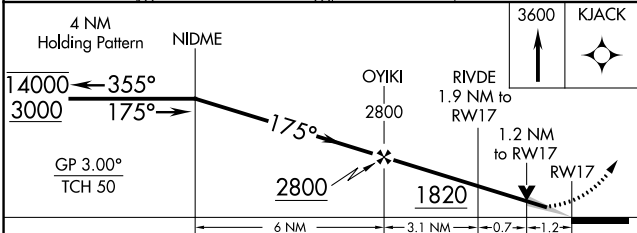
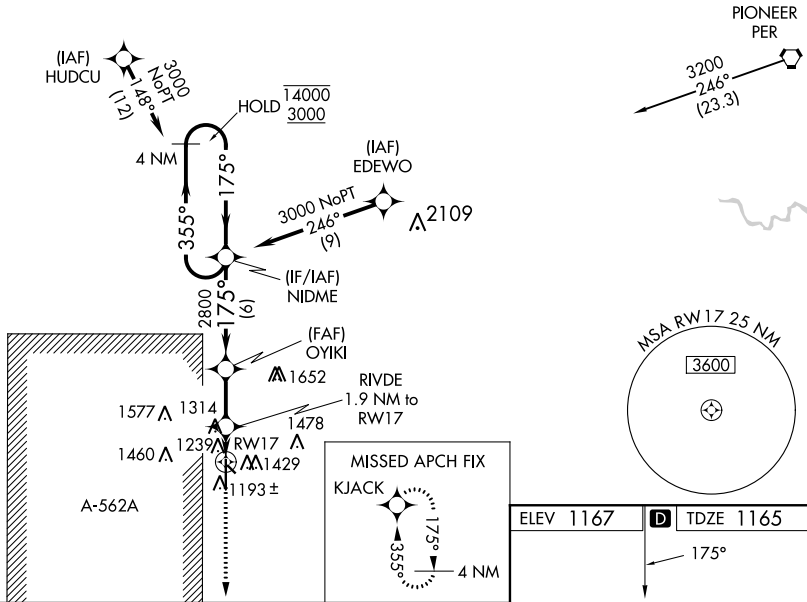
RNP APCH-GPS.

**⚠** Circling Rwy 13 NA at night. For uncompensated Baro-VNAV systems, LNAV/VNAV NA below -17°C or above 54°C.

MISSED APPROACH: Climb to 3600 direct KJACK and hold.

AWOS-3PT <b>123.725</b>	VANCE APP CON ★ <b>121.3 346.325</b>	WOODRING TOWER ★ <b>118.9 (CTAF) 0 257.95</b>	GND CON <b>121.925</b>
----------------------------	-----------------------------------------	--------------------------------------------------	---------------------------

Procedure NA for arrival on PER VORTAC  
airway radials 173 CW 335.



CATEGORY	A	B	C	D	E
LPV DA			1415-3/4	250 (300-3/4)	
LNAV/VNAV DA			1415-3/4	250 (300-3/4)	
LNAV MDA	1580-1	415 (500-1)		1580-1 1/8	415 (500-1 1/8)
<b>C</b> CIRCLING	1760-1	593 (600-1)	1820-1 3/4 653 (700-1 3/4)	1880-2 1/4 713 (800-2 1/4)	2000-3 833 (900-3)

REIL Rwy 17 **0**  
MRL Rwy 17-35 **0**

SC-1, 31 OCT 2024 to 28 NOV 2024

SC-1, 31 OCT 2024 to 28 NOV 2024