

FALLON, NEVADA

TACAN Y RWY 13R

TACAN NFL Chan 82	APCH CRS 141°	Rwy Ldg TDZE Arprt Elev 14,001 3935 3935	AL-143 [USN]	FALLON NAS (VAN VOORHIS FLD)	(KNFL)
-----------------------------	-------------------------	--	--------------	------------------------------	--------

MISSED APPROACH: Climb direct NFL TACAN, then climbing left turn to 10,500.
Intercept NFL R-117 outbound and hold. Continue climb-in-hold to 10,500.

ATIS ★ 370.925	NAVY FALLON APP CON 120.85 360.2	NAVY FALLON TOWER★ 119.25 340.2	GND CON 251.15	CLNC DEL 353.55	ASR/PAR
--------------------------	--	---	--------------------------	---------------------------	---------

Knots	60	120	180	240	300	360
V/V(fpm)	205	410	615	820	1025	1230

*Min climb of 205 ft/NM to 8600 - Controlling Obstacle Unk

CAUTION:
Fallon Muni Airport
(uncontrolled) 5 NM NW
PATTERN alt 800' AGL

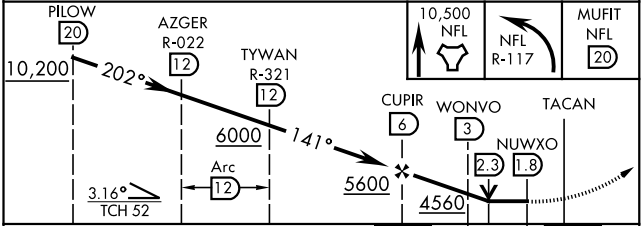
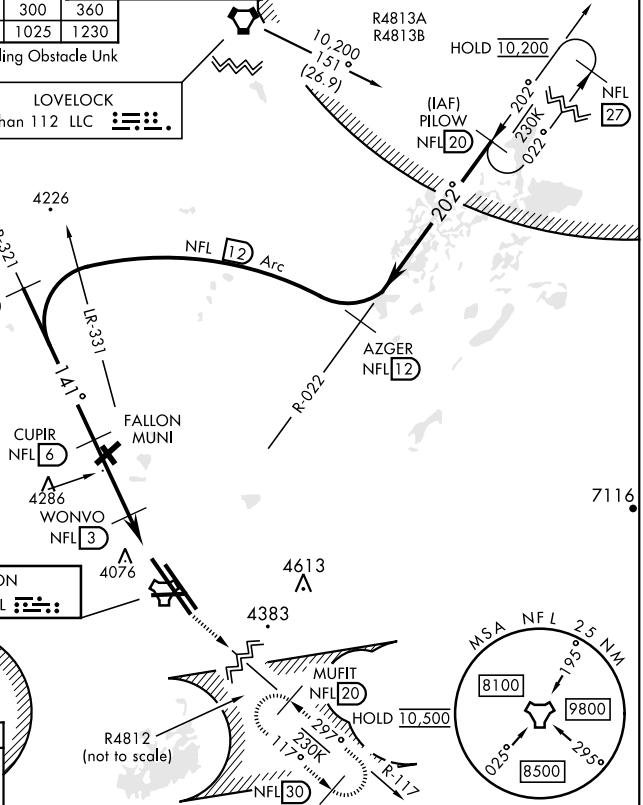
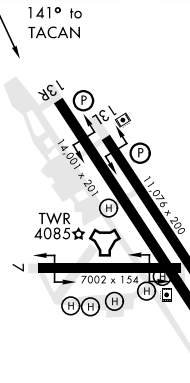
CAUTION:
RCL 91' from FAC at 3000'
from threshold.

LOVELOCK
Chan 112 LLC

HAZEN
Chan 88 HZN

FALLON
Chan 82 NFL

EMERG SAFE ALT 100 NM 15,600
ELEV 3935 TDZE 3935



CATEGORY	A	B	C	D
S-13R *	4340-1	405 (500-1)	4340-1 $\frac{1}{8}$	405 (500-1 $\frac{1}{8}$)
S-13R	4440-1	505 (600-1)	4440-1 $\frac{3}{8}$	505 (600-1 $\frac{3}{8}$)
CIRCLING	4400-1	465 (500-1)	4700-2 $\frac{1}{4}$ 765 (800-2 $\frac{1}{4}$)	4920-3 985 (1000-3)

FALLON, NEVADA
Amdt 3 19MAY22

39°25'N-118°42'W FALLON NAS (VAN VOORHIS FLD) (KNFL)

TACAN Y RWY 13R

SW-4, 31 OCT 2024 to 28 NOV 2024

SW-4, 31 OCT 2024 to 28 NOV 2024