

22083

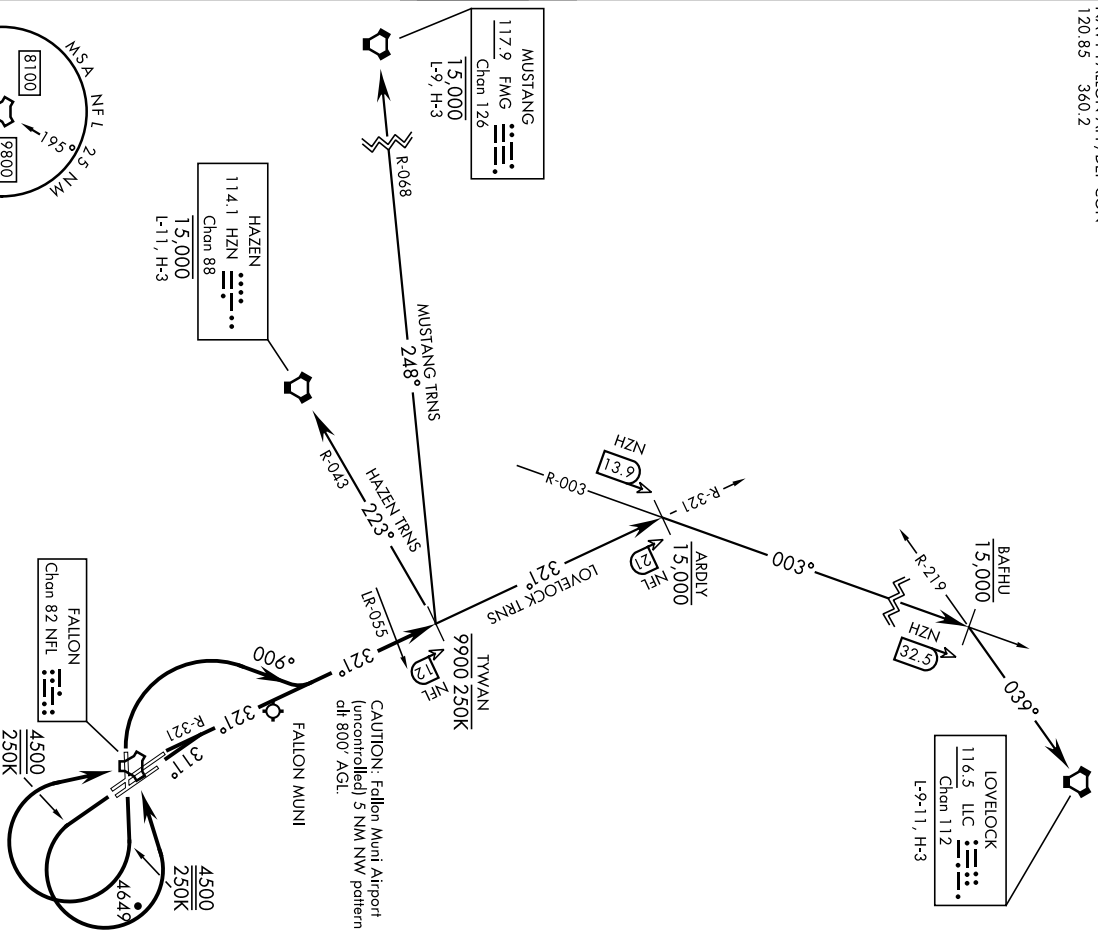
# TYWAN-ONE DEPARTURE (TYWAN1•TYWAN)

FALLON NAS (VAN VOORHIS FLD) (KNFL)  
FALLON, NEVADA

Alt	Rwy	Knobs	60	120	180	240	300	360
7		V/V(fpm)	217	434	651	868	1085	1302

Minimum Climb Rate to 4900

ATIS 370.925 ★  
CLNC DEL  
353.53  
GND CON  
251.15  
NAVY FALLON TOWER ★  
119.25 340.2  
NAVY FALLON APP/DEP CON  
120.85 360.2



SW-4, 31 OCT 2024 to 28 NOV 2024

SW-4, 31 OCT 2024 to 28 NOV 2024

(Continued on next page)

TA FL 80

# TYWAN-ONE DEPARTURE (TYWAN1•TYWAN)

FALLON, NEVADA  
FALLON NAS (VAN VOORHIS FLD) (KNFL)

Orig 24MAR22

A1-143 [USN]

## ▼ DEPARTURE ROUTE DESCRIPTION

TAKEOFF RWY 7: Climb to 4500, then climbing right turn to NFL TACAN, intercept NFL R-321 to TYWAN and cross TYWAN at or below 9900. Do not exceed 250 KIAS until TYWAN.

TAKEOFF RWY 13L/R: Climb to 4500, then climbing left turn to NFL TACAN, intercept NFL R-321 to TYWAN and cross TYWAN at or below 9900. Do not exceed 250 KIAS until NFL.

TAKEOFF RWY 25: Climbing right turn to intercept NFL TACAN R-321 to TYWAN. Cross TYWAN at or below 9900. Do not exceed 250 KIAS until established on NFL R-321.

TAKEOFF RWY 31L/R: Climb on heading 311° to intercept NFL TACAN R-321 to TYWAN. Cross TYWAN at or below 9900.

HAZEN TRANSITION (TYWAN1.HZN): Left turn direct HZN VORTAC. Cross HAZEN at or below 15,000 or as assigned by ATC.

LOVELOCK TRANSITION (TYWAN1.LLC): Direct ARDLY, right turn direct BAFHU, right turn direct LLC VORTAC. Cross ARDLY at or below 15,000 or as assigned by ATC.

MUSTANG TRANSITION (TYWAN1.FMG): Left turn direct FMG VORTAC. Cross MUSTANG at or below 15,000 or as assigned by ATC.