

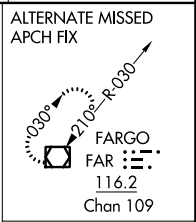
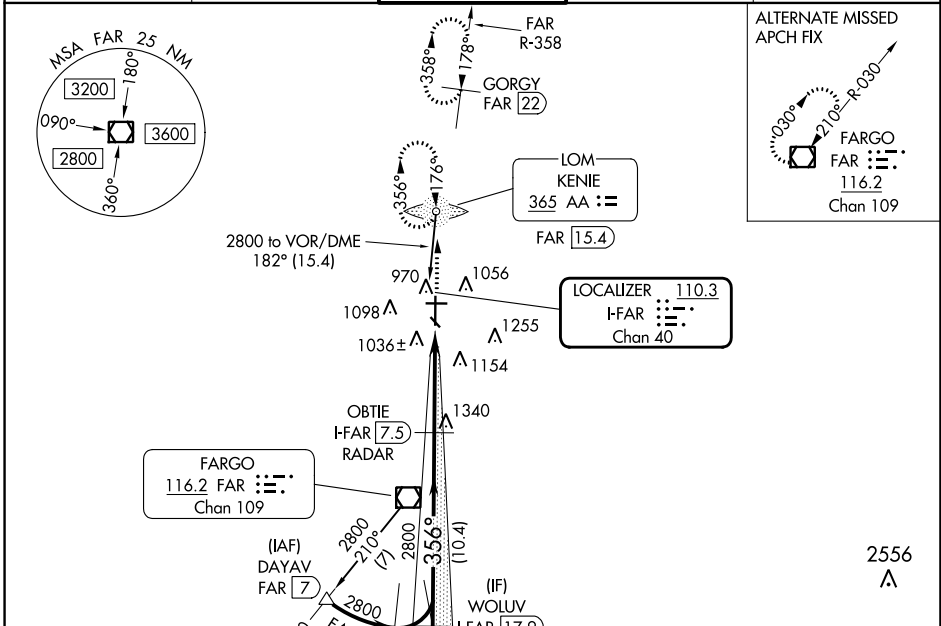
LOC/DME I-FAR 110.3 Chan 40	APP CRS 356°	Rwy Idg TDZE Apt Elev	9001 899 901
---	------------------------	-----------------------------	---

ILS or LOC RWY 36

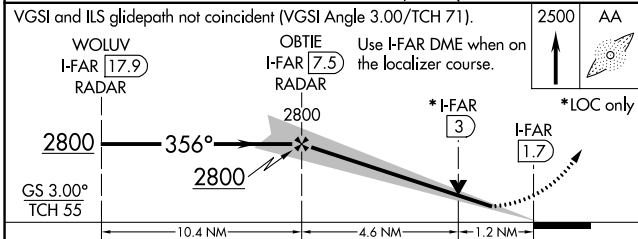
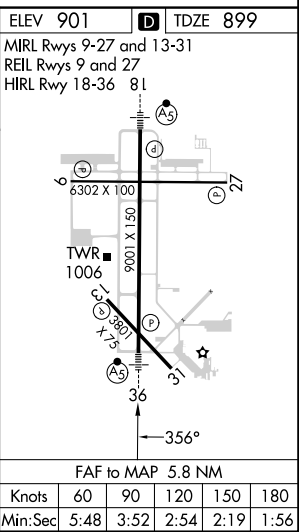
HECTOR INTL (F.A.R.)

ADF or DME required for procedure entry. ADF or DME required.	MALSR 	MISSED APPROACH: Climb to 2500 direct KENIE LOM and hold (DME aircraft climb to 4000 on FAR VOR/DME R-358 to GORGY/22 DME and hold N, RT, 178° inbound, continue climb-in-hold to 4000).
<p>▼ For inop ALS increase S-ILS 36 Cat E visibility to RVR 4000 and S-LOC 36 Cat C/D/E visibility to 1/8 SM.</p> <p>▲ #RVR 1800 authorized with use of FD or AP or HUD to DA.</p>		

ATIS 124.5 379.2	FARGO APP CON 120.4 377.15	FARGO TOWER 133.8 290.4	GND CON 121.9 348.6	CLNC DEL 121.9 348.6
----------------------------	--------------------------------------	-----------------------------------	-------------------------------	--------------------------------



VGSIs and ILS glidepath not coincident (VGSi Angle 3.00/TCH 71).	2500 AA
WOLUV I-FAR [17.9] RADAR	Use I-FAR DME when on the localizer course.
OBTIE I-FAR [7.5] RADAR	
2800	*I-FAR [3] *LOC only
GS 3.00° TCH 55	I-FAR [1.7]
10.4 NM	4.6 NM
1.2 NM	



CATEGORY	A	B	C	D	E
S-ILS 36#	1099/24 200 (200-1/2)				
S-LOC 36	1360/24	461 (500-1/2)	1360/50	461 (500-1)	
CIRCLING	1380-1	479 (500-1)	1520-1 3/4 619 (700-1 3/4)	1620-2 1/4 719 (800-2 1/4)	1620-2 1/2 719 (800-2 1/2)
	Knots	60	90	120	150
	Min:Sec	5:48	3:52	2:54	2:19
					180

NC-1, 31 OCT 2024 to 28 NOV 2024

NC-1, 31 OCT 2024 to 28 NOV 2024