

WAAS CH 50106 W36A	APP CRS 356°	Rwy Idg TDZE Apt Elev	9001 899 901
--	------------------------	-----------------------------	---

RNAV (GPS) RWY 36
HECTOR INTL (F.A.R.)

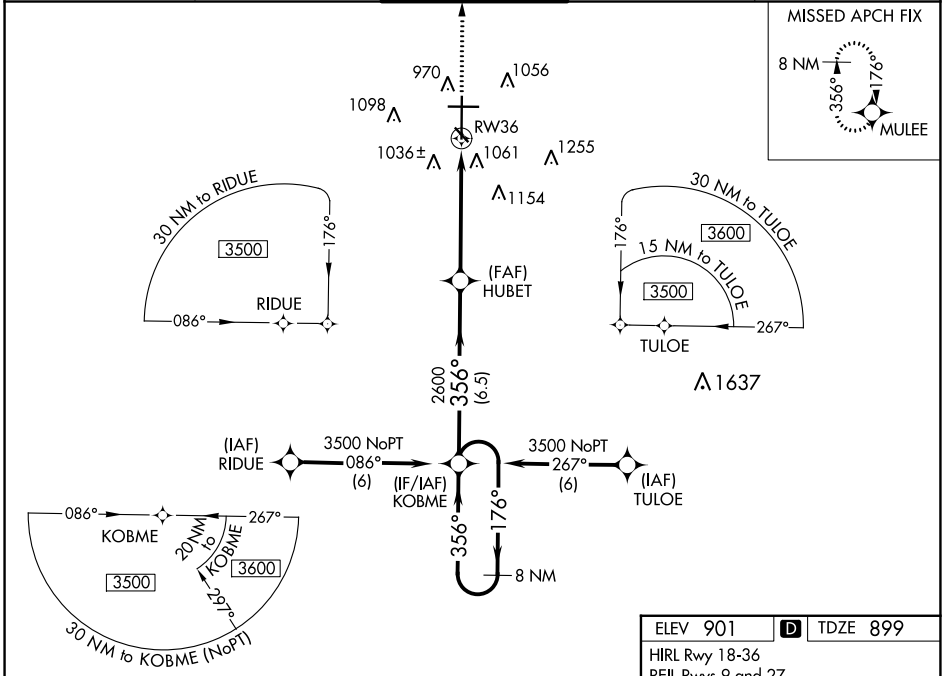
RNP APCH.

Baro-VNAV NA below -16°C (4°F). For inop MALSR, increase LPV Cat E visibility to RVR 4000, and increase LNAV/VNAV and LNAV Cat E visibility to 1½ mile.

MALSR

MISSED APPROACH: Climb to 3500 direct MULEE and hold.

ATIS 124.5 379.2	FARGO APP CON 120.4 377.15	FARGO TOWER 133.8 290.4	GND CON 121.9 348.6	CLNC DEL 121.9 348.6
----------------------------	--------------------------------------	-----------------------------------	-------------------------------	--------------------------------



NC-1, 31 OCT 2024 to 28 NOV 2024

NC-1, 31 OCT 2024 to 28 NOV 2024

VGSI and RNAV glidepath not coincident (VGSI Angle 3.00/TCH 71).

8 NM Holding Pattern

KOBME

HUBET

3500

176°

356°

356°

2600

3500 MULEE

*1.4 NM to RW36

*LNAV only.

RW36

GP 3.00°

TCH 55

6.5 NM

3.7 NM

1.4

CATEGORY	A	B	C	D	E
LPV DA	1150/24		251 (300-½)		
LNAV/VNAV DA	1360/50		461 (500-1)	1360/60 461 (500-1¼)	
LNAV MDA	1420/24	521 (600-½)	1420/50 521 (600-1)	1420/60	521 (600-1¼)
CIRCLING	1420-1	519 (600-1)	1520-1¾ 619 (700-1¾)	1620-2¼ 719 (800-2¼)	1620-2½ 719 (800-2½)

ELEV 901

TDZE 899

HIRL Rwy 18-36

REIL Rwy 9 and 27

MIRL Rwy 9-27 and 13-31

81

AS

6302 X 100

27

TWR 1006

9001 X 150

36

356°