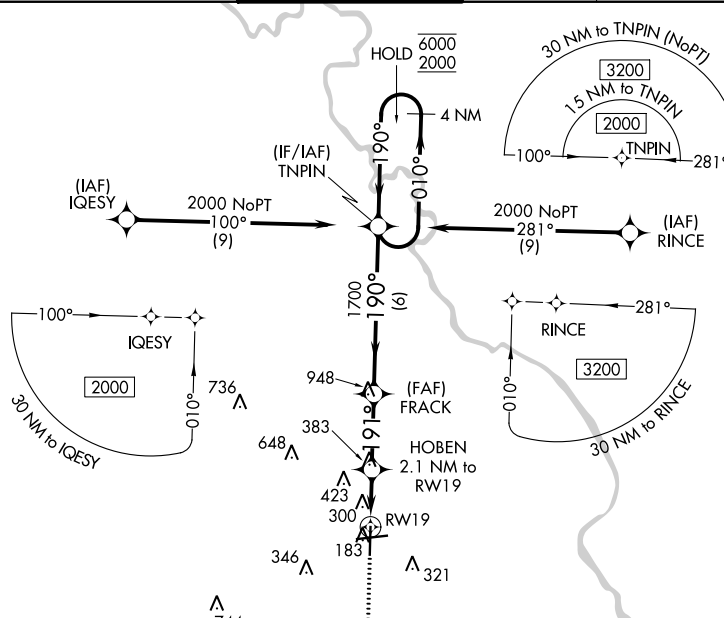


APP CRS	Rwy Idg	6000
191°	TDZE	144
	Apt Elev	147

RNAV (GPS) RWY 19

FLORENCE RGNL (FLO)

RNP APCH - GPS.		MISSED APPROACH: Climb to 2000 direct PAILS and on track 188° to NUTAL and hold.				
<p>▼ Rwy 19 helicopter visibility reduction below 1 SM NA. Straight-in Rwy 19 NA at night. Circling Rwy 1, 19 NA at night.</p>		<p>FLORENCE TOWER ★</p> <p>125.1 (CTAF) 353.85</p>		<p>GND CON</p> <p>121.9 353.85</p>	<p>CLNC DEL</p> <p>121.9 353.85</p>	<p>UNICOM</p> <p>122.95</p>
<p>ATIS</p> <p>123.625</p>	<p>FLORENCE APP CON★</p> <p>118.6 341.7 135.25 316.15</p> <p>(256°-074°) (075°-255°)</p>					



ELEV 147	TDZE 144
191°	

MIRL Rwy 1-19
REIL Rwy 1, 19 and 27
HIRL Rwy 9-27

2000	PAILS	NUTAL	VGSI and descent angles not coincident (VGSI Angle 3.00/TCH 32).	
↑	✧	△	4 NM	TNPIN Holding Pattern
<p>FRACK</p> <p>HOBEN 2.1 NM to RWY 19</p> <p>840</p>		<p>190°</p> <p>1700</p> <p>010° → 6000</p> <p>← 190° 2000</p>		
-2.1 NM		-2.7 NM		6 NM
CATEGORY	A	B	C	D
LNAV MDA	560-1	416 (500-1)	560-1 ¹ / ₈	416 (500-1 ¹ / ₈)
CIRCLING	640-1 493 (500-1)	660-1 513 (600-1)	900-2 ¹ / ₄ 753 (800-2 ¹ / ₄)	900-2 ¹ / ₂ 753 (800-2 ¹ / ₂)

SE-2, 31 OCT 2024 to 28 NOV 2024

SE-2, 31 OCT 2024 to 28 NOV 2024