

RNAV (GPS) RWY 36

APCH CRS	Rwy Idg	5184
015°	TDZE	740
	Arprt Elev	754

AL-151 [USA]

GODMAN AAF (KF TK)

RNP APCH - GPS

ODALS

MISSED APPROACH: Climbing left turn to 2500 direct HONAL and hold.

▼ * Straight-in Rwy 36 at night, operational VGSI required, remain on or above VGSI glidepath until threshold. When ALS inop, increase CAT CD vis to 1½ miles. Helicopter visibility reduction below 1 mile NA.

ATIS

109.6

LOUISVILLE APP CON

132.075 327.0

TOWER ★

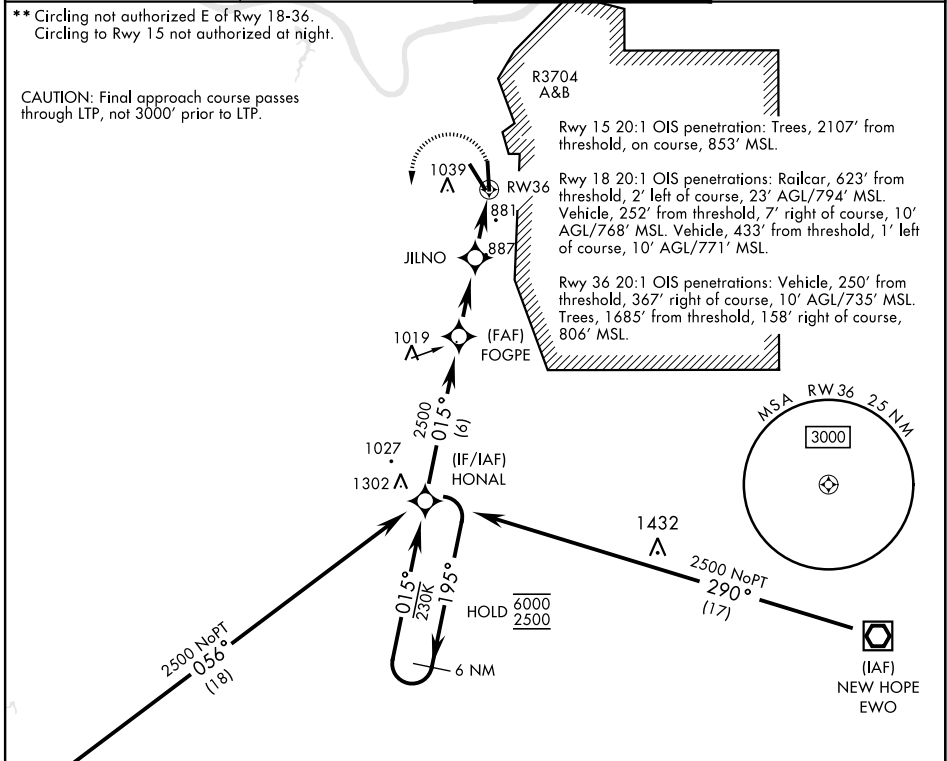
133.35 (CTAF) 0

GND CON

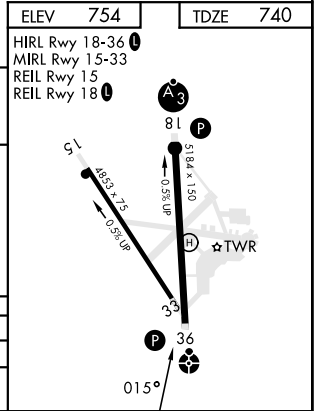
121.9 239.3

** Circling not authorized E of Rwy 18-36.
Circling to Rwy 15 not authorized at night.

CAUTION: Final approach course passes through LTP, not 3000' prior to LTP.



6 NM Holding Pattern		HONAL		FOGPE		JILNO		RWY 36	
6000	2500	195°	015°	2500	1580	2.9 NM	2.5 NM		
3.00°	TCH 55								
CATEGORY	A	B	C	D					
LNAV MDA*	1240-1	500 (500-1)	1240-1¼	500 (500-1¼)					
CIRCLING**	1340-1	586 (600-1)	1340-1½	586 (600-1½)	1340-2	586 (600-2)			



RNAV (GPS) RWY 36

SE-1, 31 OCT 2024 to 28 NOV 2024

SE-1, 31 OCT 2024 to 28 NOV 2024