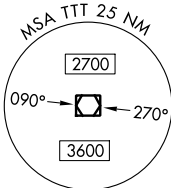


RADAR and DME required.

**TOP ALTITUDE:
ASSIGNED BY ATC**

NOTE: SOLDO Transition: ATC assigned.

LONE STAR DEP CON
118.1 306.95 (North)
135.975 379.9 (South)
ATIS
120.7
CLNC DEL
124.65
GND CON
121.9
MEACHAM TOWER
118.3 257.8



MAVERICK
113.1 TTT
Chan 78



TAKEOFF MINIMUMS:

Rwys 16, 17: Standard.

Rwy 34: 300-1 7/8 or standard with minimum climb of 225'/NM to 1100, or alternatively, with standard takeoff minimums and a normal 200'/NM climb gradient, takeoff must occur no later than 2000' prior to DER.

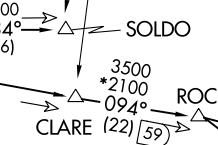
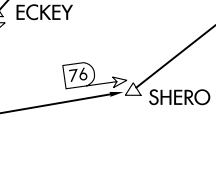
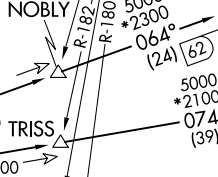
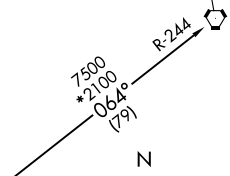
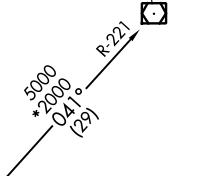
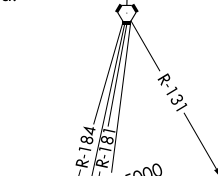
Rwy 35: 300-1 1/4 or standard with minimum climb of 210'/NM to 900, or alternatively, with standard takeoff minimums and a normal 200'/NM climb gradient, takeoff must occur no later than 1300' prior to DER.

NOTE: Chart not to scale.

BONHAM
114.6 BYP
Chan 93

PARIS
113.6 PRX
Chan 83

TEXARKANA
116.3 TXK
Chan 110



GREGG COUNTY
112.9 GGG
Chan 76

TYLER
114.2 TYR
Chan 89



GARLAND FIVE DEPARTURE
(GARLS.TTT) 25JAN24

FORT WORTH MEACHAM INTL (FTW)
FORT WORTH, TEXAS

(GARLS.TTT) 24305
GARLAND FIVE DEPARTURE

AL-159 (FAA)
FORT WORTH MEACHAM INTL (FTW)
FORT WORTH, TEXAS

(CONTINUED ON FOLLOWING PAGE)

GARLAND FIVE DEPARTURE



DEPARTURE ROUTE DESCRIPTION

TAKEOFF RUNWAY 16: Climb on heading 166° to 1600 before proceeding on course.

TAKEOFF RUNWAY 17: Climb on heading 164° to 1600 before proceeding on course.

When entering controlled airspace, fly assigned heading for RADAR vectors to appropriate route. Maintain ATC assigned altitude.

GREGG COUNTY TRANSITION (GARL5.GGG): From over TTT VOR/DME on TTT R-094 to ROCKK, then on GGG R-279 to GGG VORTAC.

PARIS TRANSITION (GARL5.PRX): From over TTT VOR/DME on TTT R-064 to ECKEY, then on PRX R-221 to PRX VOR/DME.

SOLDO TRANSITION (GARL5.SOLDO): From over TTT VOR/DME on TTT R-084 to SOLDO.

TEXARKANA TRANSITION (GARL5.TXK): From over TTT VOR/DME on TTT R-074 to SHERO, then on TXK R-244 to TXK VORTAC.

TYLER TRANSITION (GARL5.TYR): From over TTT VOR/DME on TTT R-094 to ROCKK, then on TYR R-303 to TYR VOR/DME.

SC-2, 31 OCT 2024 to 28 NOV 2024

SC-2, 31 OCT 2024 to 28 NOV 2024