

|   |                        |                             |   |
|---|------------------------|-----------------------------|---|
| LOC/DME I-VQX<br><b>110.75</b><br>Chan 44 (Y) | APP CRS<br><b>274°</b> | Rwy ldg<br>TDZE<br>Apt Elev | <b>7500</b><br><b>667</b><br><b>680</b> |
|---|------------------------|-----------------------------|---|

# ILS RWY 28L (SA CAT I)

CHICAGO O'HARE INTL (ORD)

From VOGLR: RNAV 1-GPS required.

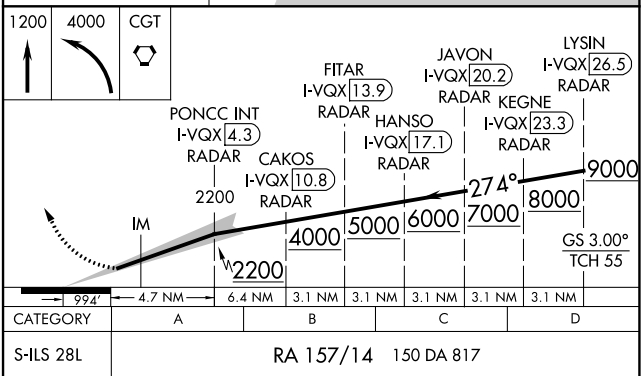
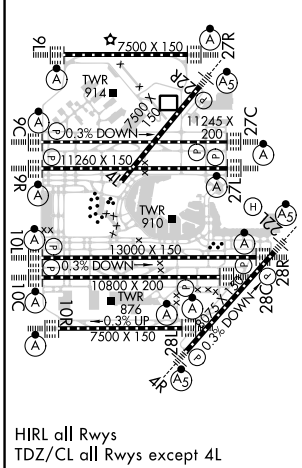
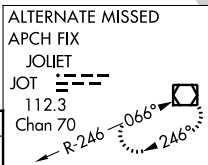
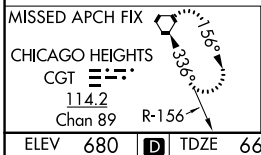
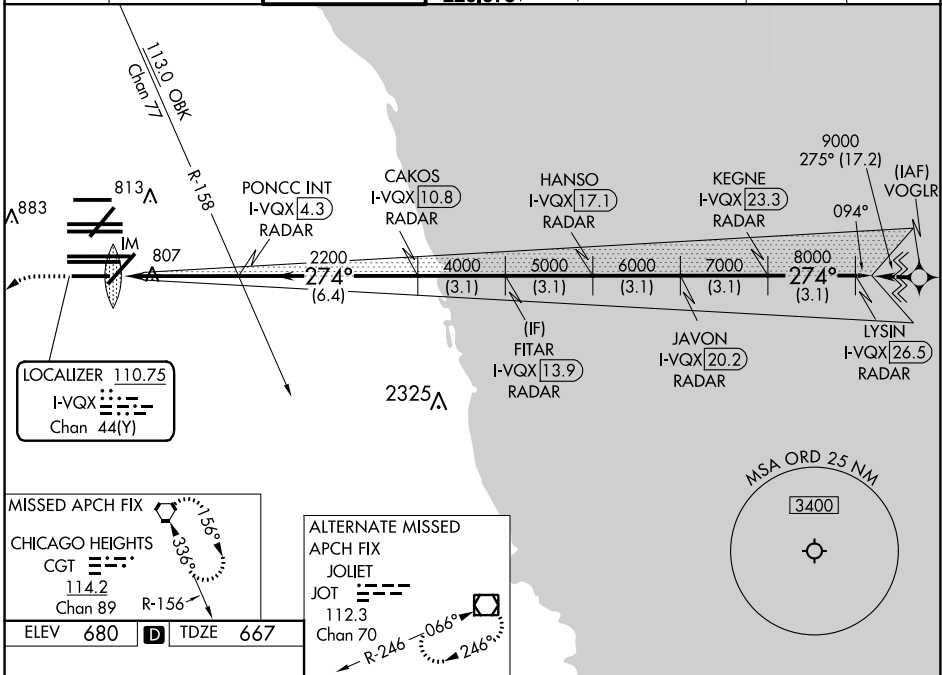
Aircraft not GPS equipped - RADAR required for procedure entry. DME or RADAR required.

Simultaneous approach authorized.  
Requires specific OPSPEC, MSPEC, or LOA approval and use of HUD to DH.



MISSED APPROACH: Climb to 1200 then climbing left turn to 4000 direct CGT VORTAC and hold.

|  |   |                                    |   |  |                          |       |
|--|---|------------------------------------|---|--|--------------------------|-------|
| D-ATIS<br><b>135.4</b><br><b>282.225</b> | CHICAGO APP CON<br><b>119.0 292.125</b> | O'HARE TOWER<br><b>133.0 348.0</b> | GND CON (TWR NORTH)<br><b>124.125</b><br>(TWR SOUTH)<br><b>118.05</b><br>(ALL TWRs)<br><b>226.675</b> | (TWR CENTER) (OBND)<br><b>121.75</b><br>(IBND)<br><b>121.9</b> | CLNC DEL<br><b>121.6</b> | CPDLC |
|--|---|------------------------------------|---|--|--------------------------|-------|



SA CATEGORY I ILS-SPECIAL AIRCREW & AIRCRAFT CERTIFICATION REQUIRED

EC-3, 31 OCT 2024 to 28 NOV 2024

EC-3, 31 OCT 2024 to 28 NOV 2024