

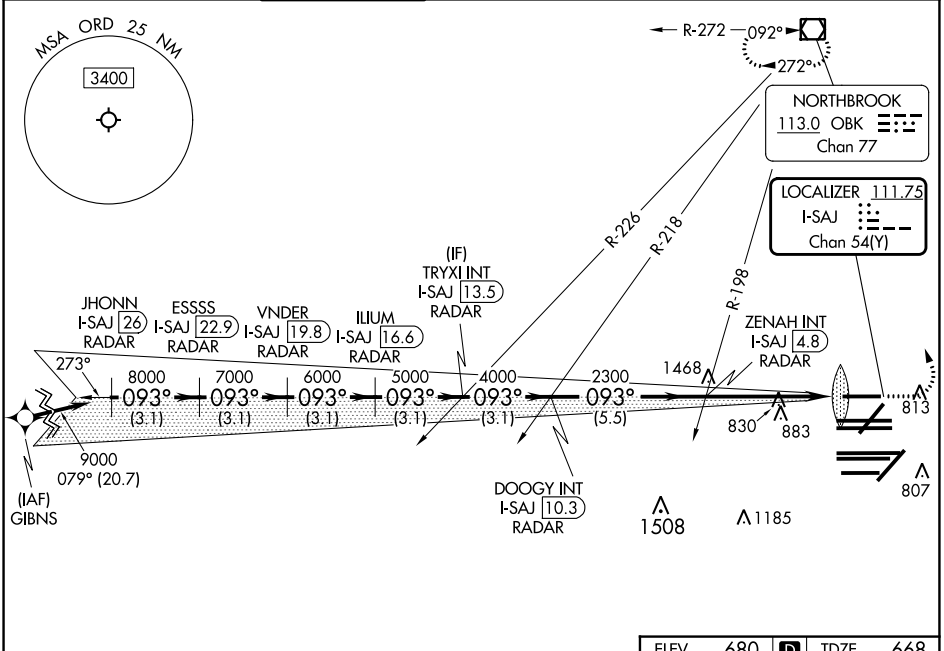
LOC/DME I-SAJ <b>111.75</b> Chan 54 (Y)	APP CRS <b>093°</b>	Rwy Idg <b>7500</b>
		TDZE <b>668</b>
		Apt Elev <b>680</b>

# ILS RWY 9L (CAT II & III)

CHICAGO O'HARE INTL (ORD)

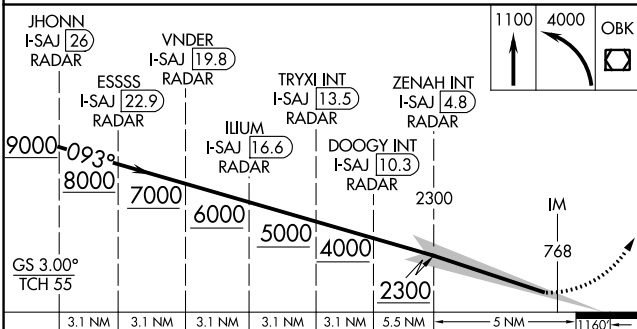
RNAV-1 GPS or RADAR required for procedure entry. RADAR or DME required.	ALSF-2 	MISSED APPROACH: Climb to 1100 then climbing left turn to 4000 direct OBK VOR/DME and hold, continue climb-in-hold to 4000.
Simultaneous approach authorized.		

D-ATIS <b>135.4</b> <b>282.225</b>	CHICAGO APP CON <b>119.0 292.125</b>	O'HARE TOWER <b>128.15 348.0</b>	GND CON (TWR CENTER) <b>124.125</b> (TWR NORTH) <b>118.05</b> (TWR SOUTH) <b>226.675</b> (ALL TWRs)	CLNC DEL <b>121.6</b>	CPDLC
--	---	-------------------------------------	--	--------------------------	-------



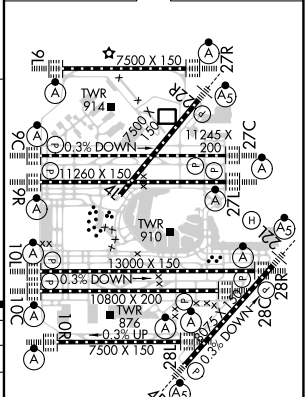
EC-3, 31 OCT 2024 to 28 NOV 2024

EC-3, 31 OCT 2024 to 28 NOV 2024



ELEV 680	TDZE 668
----------	----------

CATEGORY	A	B	C	D
S-ILS 9L	CAT II RA 104/12 100 DA 768			
S-ILS 9L	CAT III RVR 06			



**CATEGORY II & III ILS - SPECIAL AIRCREW & AIRCRAFT CERTIFICATION REQUIRED**

HIRL all Rwys  
TDZ/CL all Rwys except 4L