

LOC/DME I-MED <b>111.1</b> Chan <b>48</b>	APP CRS <b>093°</b>	Rwy Idg <b>12246</b> TDZE <b>672</b> Apt Elev <b>680</b>
---	------------------------	--

# ILS or LOC RWY 10L

CHICAGO O'HARE INTL (ORD)

From GIBNS: RNAV-1 GPS required.

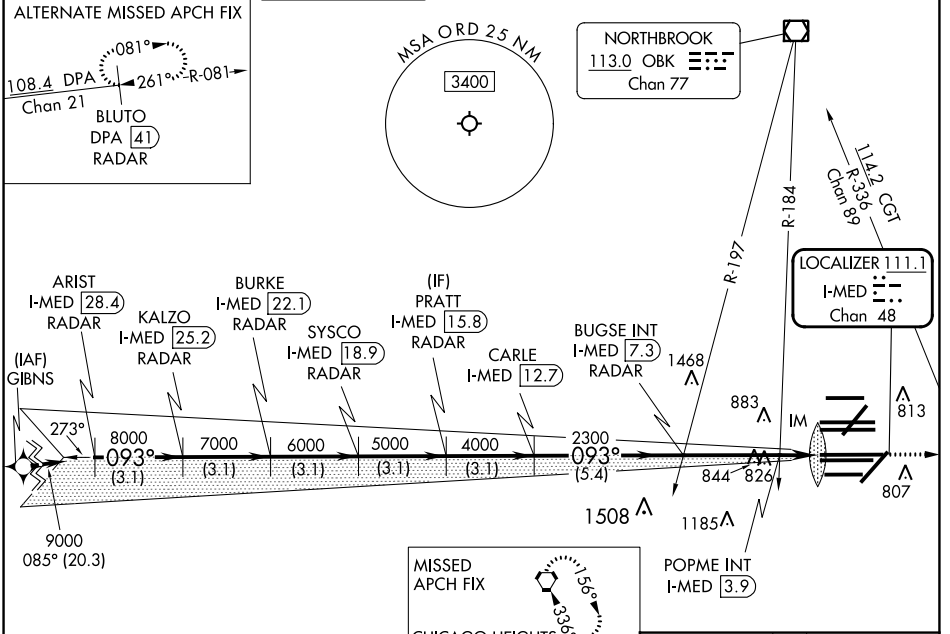
RNAV 1-GPS or RADAR required for procedure entry. DME or RADAR required.

Simultaneous approach authorized.

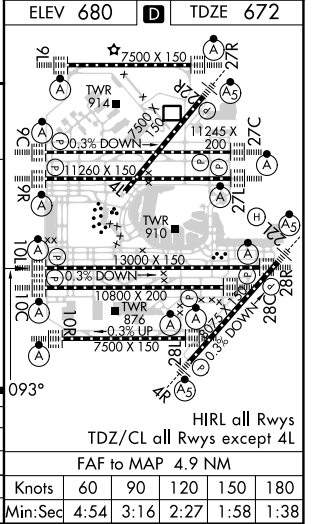
ALSF-2

MISSED APPROACH: Climb to 4000 on heading 093° and CGT VORTAC R-336 to CGT VORTAC and hold.

D-ATIS <b>135.4</b> <b>282.225</b>	CHICAGO APP CON <b>119.0 292.125</b>	O'HARE TOWER <b>132.7 348.0</b>	GND CON (TWR CENTER) <b>124.125</b> (TWR NORTH) <b>118.05</b> (TWR SOUTH) <b>226.675</b> (ALL TWRS)	(TWR CENTER) <b>121.75</b> (OBND) <b>121.9</b> (IBND)	CLNC DEL <b>121.6</b>	CPDLC
--	---	------------------------------------	--	---	--------------------------	-------



ARIST I-MED 28.4 RADAR	BURKE I-MED 22.1 RADAR	PRATT I-MED 15.8 RADAR	SYSCO I-MED 18.9 RADAR	CARLE I-MED 12.7 RADAR	BUGSE INT I-MED 7.3	POPME INT I-MED 3.9	I-MED 2.4		
VGSI and ILS glidepath not coincident (VGSI Angle 3.00/TCH 74). hdg 093° CGT R-336 *LOC only.									
9000	8000	7000	6000	5000	4000	2300	1200		
3.1 NM	3.1 NM	3.1 NM	3.1 NM	3.1 NM	5.4 NM	3.4 NM	1.4 NM		
GS 3.00° TCH 56 HIRL all Rwy's TDZ/CL all Rwy's except 4L FAF to MAP 4.9 NM									
CATEGORY	A		B		C		D		
S-ILS 10L	872/18		200 (200-½)						
S-LOC 10L	1200/24	528 (600-½)	1200/55		528 (600-1)				
POPME FIX MINIMUMS (DUAL VOR RECEIVERS OR DME REQUIRED)									
S-LOC 10L	1080/24	408 (400-½)	1080/40		408 (400-¾)				
				Knots	60	90	120	150	180
				Min:Sec	4:54	3:16	2:27	1:58	1:38



EC-3, 31 OCT 2024 to 28 NOV 2024

EC-3, 31 OCT 2024 to 28 NOV 2024