

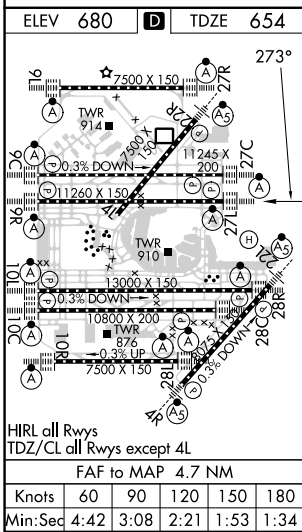
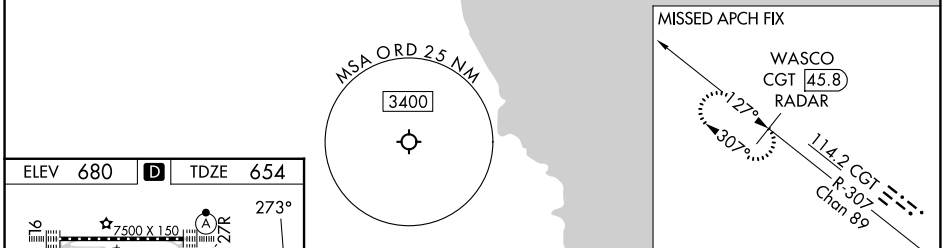
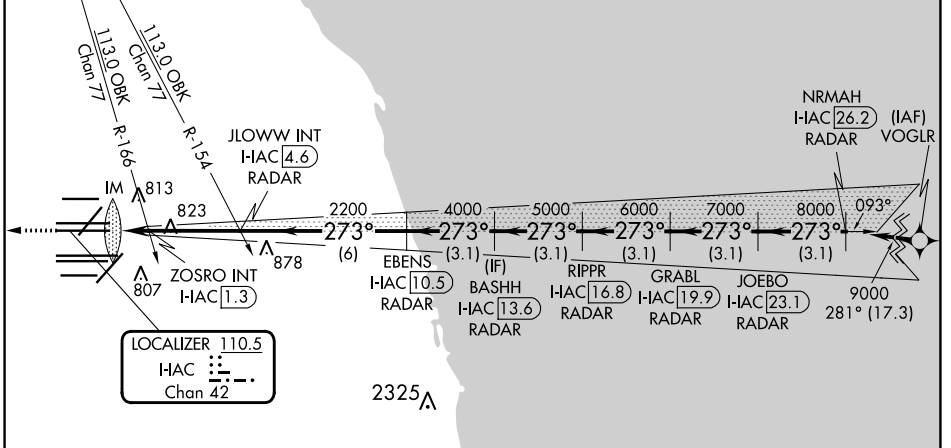
LOC/DME I-AIC 110.5 Chan 42	APP CRS 273°	Rwy ldg 11260 TDZE 654 Apt Elev 680
---	------------------------	--

ILS or LOC RWY 27L

CHICAGO O'HARE INTL (ORD)

RNP APCH-GPS from VOGLR. Aircraft not GPS equipped - RADAR required for procedure entry. DME or RADAR required.	ALSF-2 	MISSED APPROACH: Climb to 1200 then climb to 4000 on heading 265° and on CGT VORTAC R-307 to WASCO/CGT 45.8 DME/RADAR and hold.
Simultaneous approach authorized. For inop ALS, increase S-LOC 27L Cat C/D visibility to 1 1/2 SM.		

D-ATIS 135.4 282.225	CHICAGO APP CON 119.0 292.125	O'HARE TOWER 126.9 348.0	GND CON 124.125 (TWR NORTH) 118.05 (TWR SOUTH) 226.675 (ALL TWRs)	(TWR CENTER) 121.75 (OBND) 121.9 (IBND)	CLNC DEL 121.6	CPDLC
--	--	---	---	---	--------------------------	-------



1200	4000	CGT R-307	WASCO CGT [45.8] RADAR	VGSI and ILS glidepath not coincident (VGSI Angle 3.00/TCH 77).				
↑	↑	hdg 265°						
		JLOWW INT I-AIC [4.6] RADAR	BASHH I-AIC [13.6] RADAR	GRABL I-AIC [19.9] RADAR				
		ZOSRO INT I-AIC [1.3] RADAR	RIPPR I-AIC [16.8] RADAR	JOEBO I-AIC [23.1] RADAR				
		EBENS I-AIC [10.5] RADAR		NRMAH I-AIC [26.2] RADAR				
		I-AIC [0.2]						
		2200	4000	5000	6000	7000	8000	9000
		1160						GS 3.00° TCH 57
		0.1	1.3	3.3 NM	3.1 NM	3.1 NM	3.1 NM	3.1 NM
CATEGORY	A		B		C		D	
S-ILS 27L	854/18 200 (200-1/2)							
S-LOC 27L	1160/24	506 (500-1/2)	1160/55		506 (500-1)			
ZOSRO FIX MINIMUMS (DUAL VOR RECEIVERS OR DME REQUIRED)								
S-LOC 27L	1080/24	426 (400-1/2)	1080/40 426 (400-3/4)					

EC-3, 31 OCT 2024 to 28 NOV 2024

EC-3, 31 OCT 2024 to 28 NOV 2024