

# ILS PRM RWY 28C


(CLOSE PARALLEL)

CHICAGO O'HARE INTL (ORD)

LOC/DME I-VZE <b>108.95</b> Chan <b>26 (Y)</b>	APP CRS <b>273°</b>	Rwy ldg <b>10800</b> TDZE <b>651</b> Apt Elev <b>680</b>
--	------------------------	--

Aircraft not GPS equipped - RADAR required for procedure entry. DME or RADAR required.  
From VOGLR: RNAV 1-GPS required.

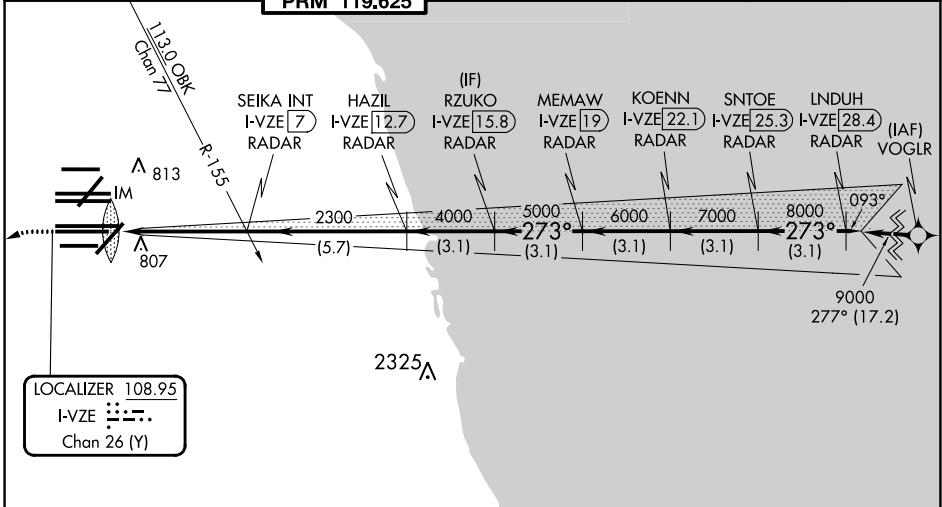
ALSF-2



MISSED APPROACH: Climb to 1100 then climbing left turn to 4000 on heading 215° and DPA VOR/DME R-082 to DPA VOR/DME and hold.

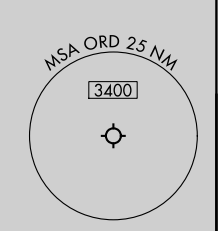
Simultaneous approach authorized. Use of FD or AP required during simultaneous operations. Dual VHF comm required. See additional requirements on AAUP.

D-ATIS <b>135.4</b> <b>282.225</b>	CHICAGO APP CON <b>119.0 292.125</b>	O'HARE TOWER <b>120.75 348.0</b> <b>PRM 119.625</b>	GND CON (TWR CENTER) <b>124.125</b> (TWR NORTH) <b>118.05</b> (TWR SOUTH) <b>226.675</b> (ALL TWRs)	(TWR CENTER) <b>121.75</b> (OBND) <b>121.9</b> (IBND)	CLNC DEL <b>121.6</b>	CPDLC
--	---	---	--	---	--------------------------	-------

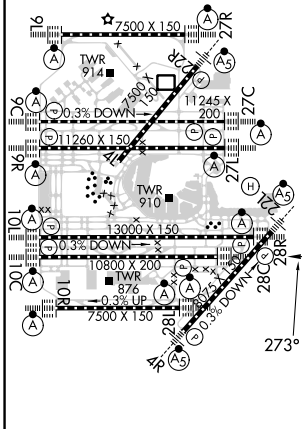


LOCALIZER 108.95  
I-VZE  
Chan 26 (Y)

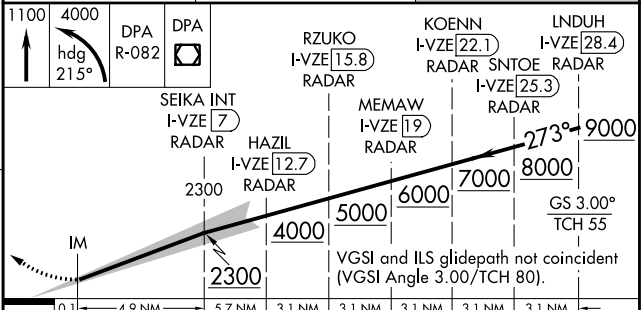
MISSED APCH FIX  
DUPAGE  
DPA  
108.4  
Chan 21  
R-248-068°



ELEV 680	D	TDZE 651
----------	---	----------



HIRL all Rwy  
TDZ/CL all Rwy except 4L



0.1	4.9 NM	5.7 NM	3.1 NM	3.1 NM	3.1 NM	3.1 NM
CATEGORY	A	B	C	D		
S-ILS 28C	851/18 200 (200-1/2)					

EC-3, 31 OCT 2024 to 28 NOV 2024

EC-3, 31 OCT 2024 to 28 NOV 2024