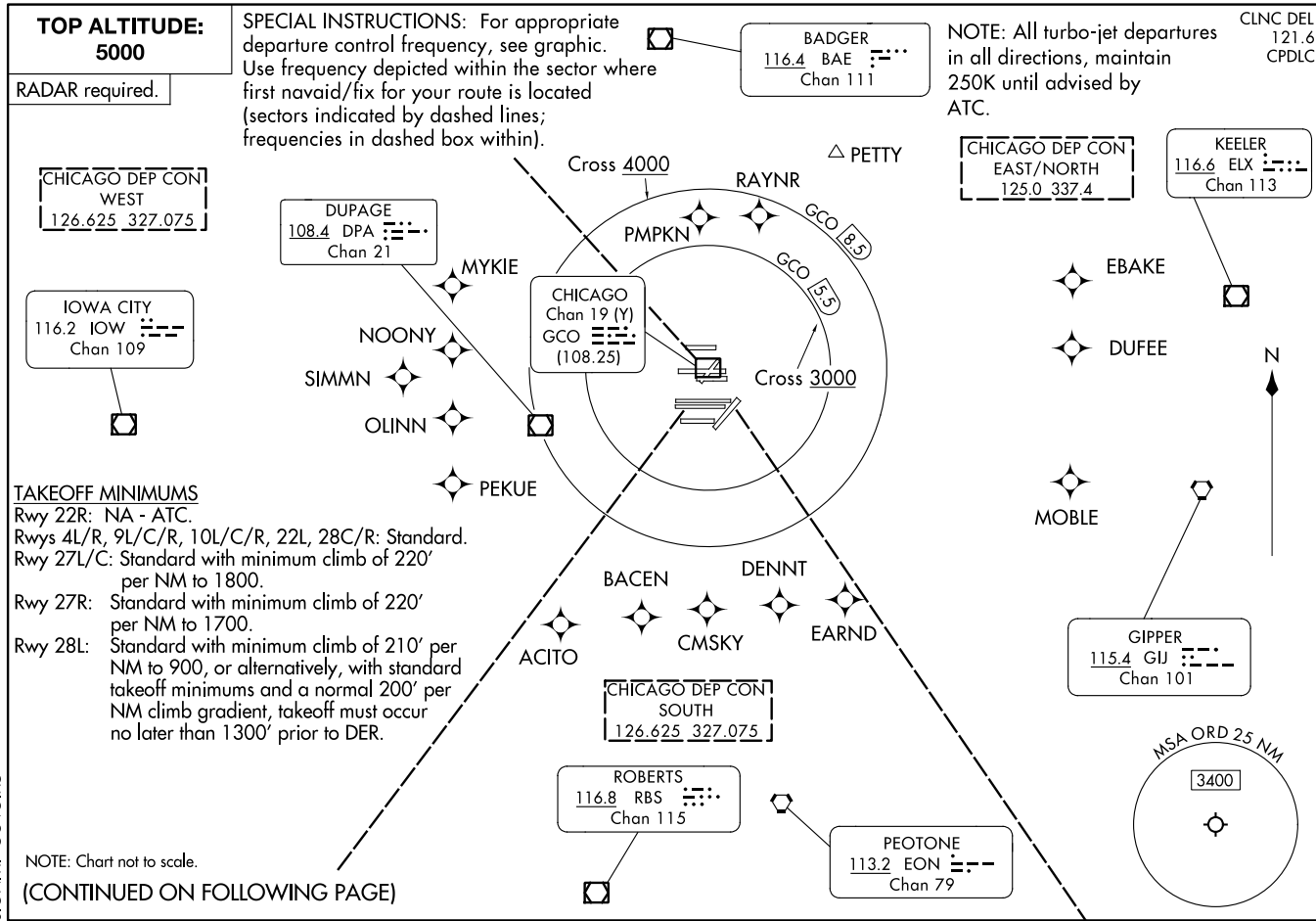


30NOV23

O'HARE EIGHT DEPARTURE

CHICAGO, ILLINOIS
CHICAGO O'HARE INTL (ORD)



**TOP ALTITUDE:
5000**

RADAR required.

CHICAGO DEP CON
WEST
126.625 327.075

IOWA CITY
116.2 IOW
Chan 109

DUPAGE
108.4 DPA
Chan 21

CHICAGO
Chan 19 (Y)
GCO
(108.25)

BADGER
116.4 BAE
Chan 111

CHICAGO DEP CON
EAST/NORTH
125.0 337.4

KEELER
116.6 ELX
Chan 113

CLNC DEL
121.6
CPDLC

TAKEOFF MINIMUMS

Rwy 22R: NA - ATC.
Rwys 4L/R, 9L/C/R, 10L/C/R, 22L, 28C/R: Standard.
Rwy 27L/C: Standard with minimum climb of 220'
per NM to 1800.
Rwy 27R: Standard with minimum climb of 220'
per NM to 1700.
Rwy 28L: Standard with minimum climb of 210' per
NM to 900, or alternatively, with standard
takeoff minimums and a normal 200' per
NM climb gradient, takeoff must occur
no later than 1300' prior to DER.

NOTE: Chart not to scale.

(CONTINUED ON FOLLOWING PAGE)

240225

AL-166 (FAA)

CHICAGO O'HARE INTL (ORD)
CHICAGO, ILLINOIS

O'HARE EIGHT DEPARTURE



DEPARTURE ROUTE DESCRIPTION

ALL AIRCRAFT: Expect RADAR vectors to first enroute navaid/fix.
Expect clearance to requested altitude/flight level ten minutes after departure.

ALL AIRCRAFT: Cross 5.5 DME arc of GCO DME at or above 3000, cross
8.5 DME arc of GCO DME at or above 4000, maintain 5000 or assigned altitude.
If unable to comply advise ATC as soon as possible prior to departure.

EC-3, 31 OCT 2024 to 28 NOV 2024

EC-3, 31 OCT 2024 to 28 NOV 2024