

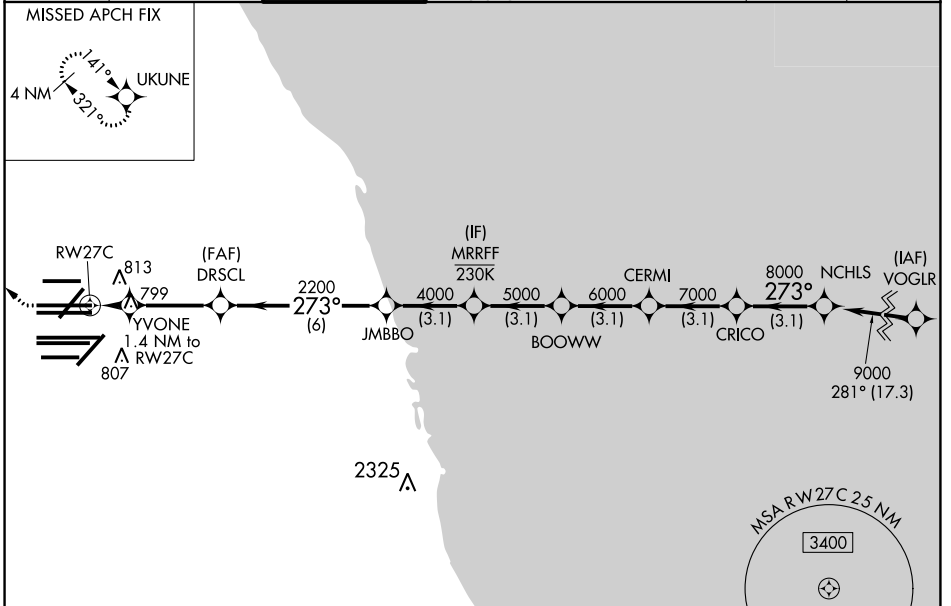
WAAS CH 70643 W27D	APP CRS 273°	Rwy Idg 11245 TDZE 653 Apt Elev 680
--	------------------------	--

RNAV (GPS) RWY 27C

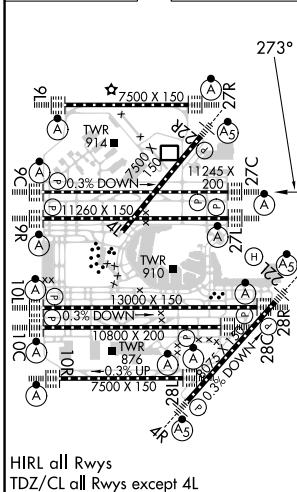
CHICAGO O'HARE INTL (ORD)

RNP APCH. Simultaneous approach authorized. LNAV procedure NA during simultaneous operations. Use of FD or AP required during simultaneous operations. For uncompensated Baro-VNAV systems, LNAV/VNAV NA below -19°C or above 54°C. For inop ALS, increase LNAV Cat C/D visibility to RVR 6000.	ALS F-2 	MISSED APPROACH: Climb to 1100 then climbing right turn to 4000 direct UKUNE and hold.
--	-------------	---

D-ATIS 135.4 282.225	CHICAGO APP CON 119.0 292.125	O'HARE TOWER 121.15 348.0	GND CON 124.125 (TWR NORTH) 118.05 (TWR SOUTH) 226.675 (ALL TWRs)	(TWR CENTER) 121.75 (OBND) 121.9 (IBND)	CLNC DEL 121.6	CPDLC
--	---	-------------------------------------	---	---	--------------------------	-------



ELEV 680	D	TDZE 653
----------	----------	----------



1100	4000	UKUNE	VGSI and RNAV glidepath not coincident (VGSI Angle 3.00/TCH 75).	NCHLS				
*LNAV only.								
YVONE 1.4 NM to RW27C	DRSC L 2200	JMBBO 4000	MRRFF 5000	BOOWW 6000				
RW27C 1160*	2200		CERMI 7000	CRICO 8000				
				NCHLS 9000				
				GP 3.00° TCH 56				
	1.4	3.3 NM	→ 6 NM →	3.1 NM 3.1 NM 3.1 NM 3.1 NM				
CATEGORY	A		B		C		D	
LPV DA			853/18		200 (200-½)			
LNAV/VNAV DA			1086/40		433 (500-¾)			
LNAV MDA	1060/24		407 (400-½)		1060/40		407 (400-¾)	

EC-3, 31 OCT 2024 to 28 NOV 2024

EC-3, 31 OCT 2024 to 28 NOV 2024