

|  |                        |  |
|--|------------------------|--|
| WAAS<br>CH <b>42634</b><br><b>W28B</b> | APP CRS<br><b>273°</b> | Rwy Idg <b>10800</b><br>TDZE <b>651</b><br>Apt Elev <b>680</b> |
|--|------------------------|--|

# RNAV (GPS) RWY 28C

CHICAGO O'HARE INTL (ORD)

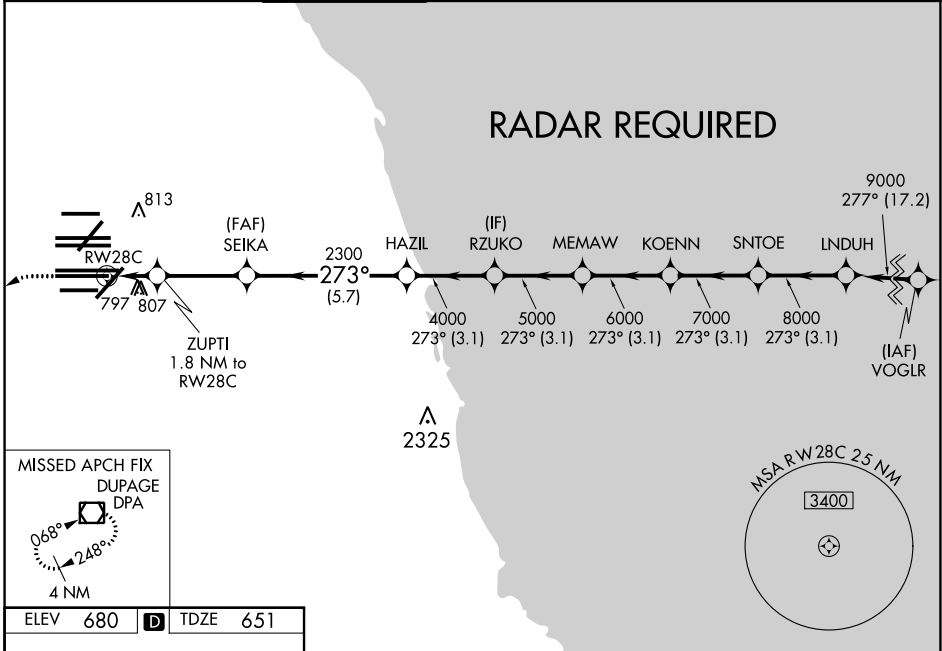
▼ DME/DME RNP-0.3 NA. Simultaneous approach authorized. For uncompensated Baro-VNAV systems, LNAV/VNAV NA below -19°C (-2°F) or above 54°C (130°F). LNAV procedure NA during simultaneous operations. Use of FD or AP providing RNAV track guidance required during simultaneous operations. For inop ALSF, increase LNAV Cat C and D visibility to RVR 6000.

ALSF-2



MISSED APPROACH:  
Climb to 1100 then  
climbing left turn to  
4000 direct DPA  
VOR/DME and hold.

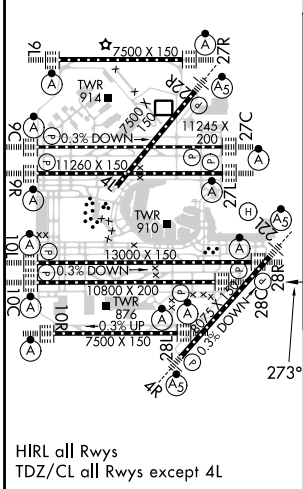
|  |  |                                     |   |   |                          |       |
|--|--|-------------------------------------|---|---|--------------------------|-------|
| D-ATIS<br><b>135.4</b><br><b>282.225</b> | CHICAGO<br>APP CON<br><b>119.0 292.125</b> | O'HARE TOWER<br><b>120.75 348.0</b> | GND CON<br><b>124.125</b><br><b>118.05</b><br><b>226.675</b> (ALL TWRS) | (TWR CENTER)<br><b>121.75</b> (OBND)<br><b>121.9</b> (IBND) | CLNC DEL<br><b>121.6</b> | CPDLC |
|--|--|-------------------------------------|---|---|--------------------------|-------|



EC-3, 31 OCT 2024 to 28 NOV 2024

EC-3, 31 OCT 2024 to 28 NOV 2024

|                 |          |                 |
|-----------------|----------|-----------------|
| ELEV <b>680</b> | <b>D</b> | TDZE <b>651</b> |
|-----------------|----------|-----------------|



|                             |               |             |  |         |             |                          |
|-----------------------------|---------------|-------------|--|---------|-------------|--------------------------|
| 1100                        | 4000          | DPA         | VGSi and RNAV glidepath not coincident (VGSi Angle 3.00/TCH 80). |         |             |                          |
| *LNAV only.                 |               |             |  |         |             |                          |
| ZUPTI<br>1.8 NM to<br>RW28C | SEIKA<br>2300 | HAZIL       | RZUKO  | MEMAW   | KOENN       | SNTOE LNDUH<br>273° 9000 |
| *1 NM to<br>RW28C           | *1260         | 4000        | 5000   | 6000    | 7000        | 8000                     |
| GP 3.00°<br>TCH 55          |               |             |  |         |             |                          |
| 1 NM                        | 0.8           | 3.2 NM      | 5.7 NM   | 3.1 NM  | 3.1 NM      | 3.1 NM                   |
| CATEGORY                    | A             | B           |  | C       |             | D                        |
| LPV DA                      | 851/18        |             | 200 (200-½)  |         |             |                          |
| LNAV/VNAV DA                | 1094/50       |             | 443 (500-1)  |         |             |                          |
| LNAV MDA                    | 1060/24       | 409 (400-½) |  | 1060/40 | 409 (400-¾) |                          |