

GOLDSBORO, NORTH CAROLINA

# ILS or LOC Y RWY 8

LOC I-GSB <b>109.3</b>	APCH CRS <b>081°</b>	Rwy Idg <b>11,760</b>
		TDZE <b>73</b>
		Arpt Elev <b>109</b>

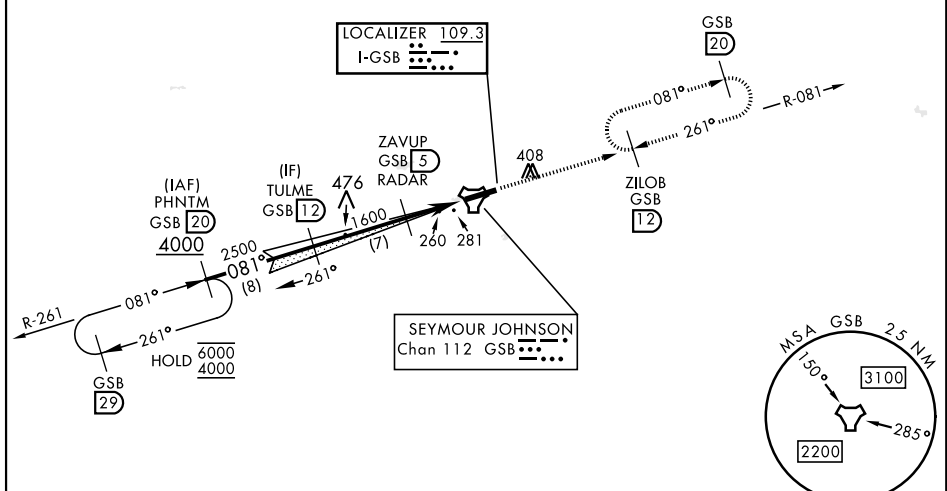
[USAF]

SEYMOUR JOHNSON AFB (KGSB)

RADAR or DME required.	ALSF-1 	MISSED APPROACH: Climb to 2300 via GSB R-081 to ZILOB and hold.
<b>∇</b> * When ALS inop, increase RVR to 40 and vis to 3/4 mile.		

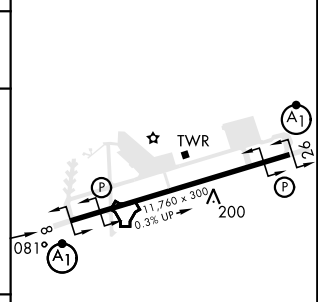
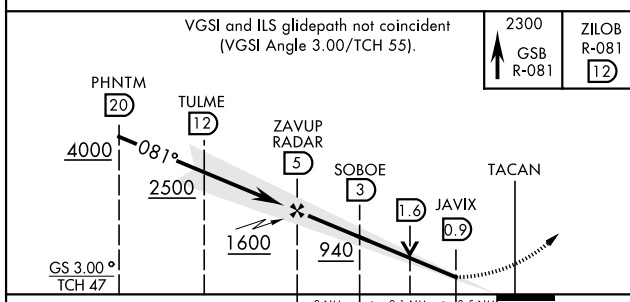
ATIS ★ <b>317.625</b>	APP CON <b>123.7 290.9</b> (258°-110°) <b>119.7 273.6</b> (111°-257°)	TOWER ★ <b>126.25 370.875</b>	GND CON <b>132.45 275.8</b>	CLNC DEL <b>128.025 270.8</b>
--------------------------	---	----------------------------------	--------------------------------	----------------------------------

\*\* When ALS inop, increase CAT AB RVR to 55 and vis to 1 mile, CAT CDE vis to 1 3/8 miles.  
 \*\*\* Circling N of Rwy 8-26 not authorized.



ELEV	109	TDZE	73
------	-----	------	----

EMERG SAFE ALT 100 NM 3700



CATEGORY	A	B	C	D	E
S-ILS 8*	273/24		200	(200-1/2)	
S-LOC 8**	520/24	447 (500-1/2)	520/45	447	(500-7/8)
CIRCLING ***	580-1 471 (500-1)	600-1 491 (500-1)	680-1 1/2 571 (600-1 1/2)	740-2 631 (700-2)	740-2 1/4 631 (700-2 1/4)

HIRL Rwy 8-26  
 FAF to MAP 4.1 NM

Knots	60	90	120	150	180
Min:Sec	4:06	2:44	2:03	1:38	1:22

GOLDSBORO, NORTH CAROLINA 35°20'N-77°58'W SEYMOUR JOHNSON AFB (KGSB)

Amdt 8 03NOV22

# ILS or LOC Y RWY 8

SE-2, 31 OCT 2024 to 28 NOV 2024

SE-2, 31 OCT 2024 to 28 NOV 2024