

LOC/DME I-GYH <b>108.3</b> Chan 20	APP CRS <b>047°</b>	Rwy Idg TDZE <b>956</b> Apt Elev <b>956</b>
--	------------------------	---

# ILS or LOC RWY 5

DONALDSON FLD (GYH)

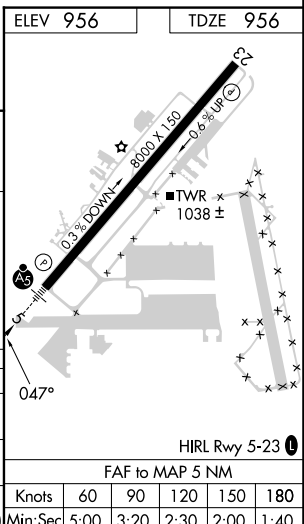
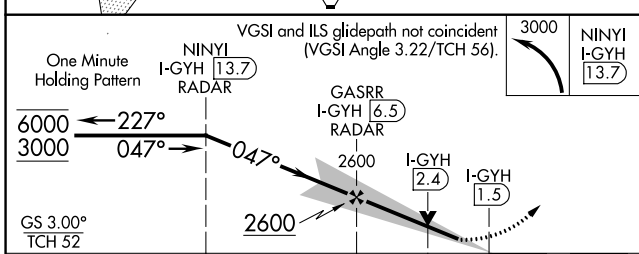
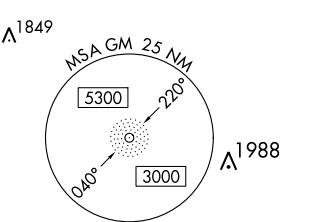
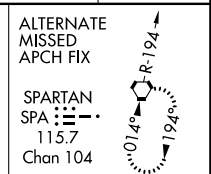
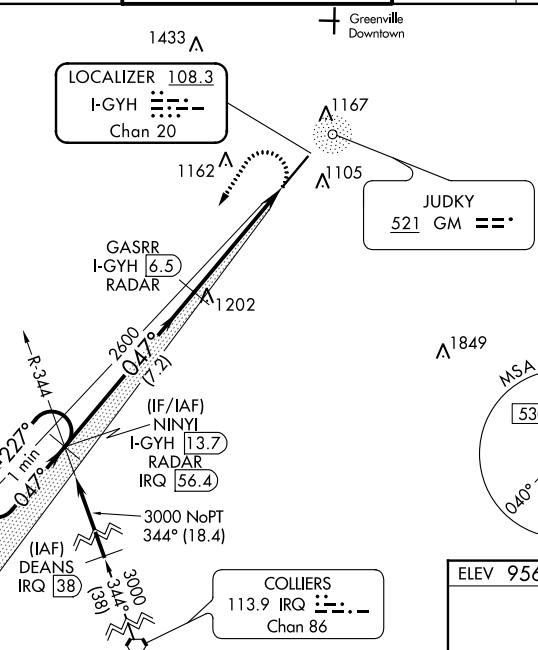
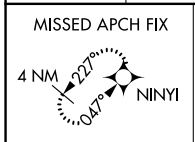
RNP APCH - GPS.  
DME or RADAR required.

▼ VDP NA when using Greer altimeter setting. When local altimeter setting not received, use Greer altimeter setting and increase S-ILS 5 DA to 1185 feet; increase all MDAs 40 feet and S-LOC 5 visibility Cts C, D, E ½ SM. For inop ALS, increase S-ILS 5 Cat E visibility to ¾ SM and increase S-LOC 5 Cat E visibility to 1 ½ SM. For inop ALS when using Greer altimeter setting, increase S-ILS 5 Cat E visibility to ¾ SM and increase S-LOC 5 Cat E visibility to 1 ½ SM. DME required when GSP App Con closed.

MALSR  
AS

**MISSED APPROACH:**  
Climbing left turn to 3000 direct NINYI and hold.

AWOS-3 <b>127.325</b>	GREER APP CON ★ <b>118.8 270.275</b>	DONALDSON TOWER ★ <b>133.325 (CTAF) 0 269.25</b>	GND CON <b>121.4</b>	CLNC DEL <b>121.4</b>	UNICOM <b>122.7</b>
--------------------------	---	---	-------------------------	--------------------------	------------------------



CATEGORY	A	B	C	D	E
S-ILS 5	1156-½		200 (200-½)		
S-LOC 5	1340-½	384 (400-½)	1340-⅝	384 (400-⅝)	
CIRCLING	1420-1 464 (500-1)	1480-1 524 (600-1)	1480-1½ 524 (600-½)	1520-2 564 (600-2)	1560-2¼ 604 (700-2¼)

ELEV 956	TDZE 956				
Knots					
60	90	120	150	180	
Min:Sec	5:00	3:20	2:30	2:00	1:40

SE-2, 31 OCT 2024 to 28 NOV 2024

SE-2, 31 OCT 2024 to 28 NOV 2024