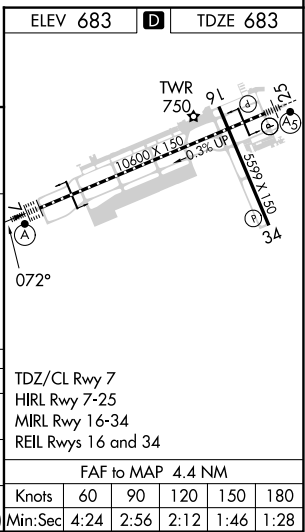
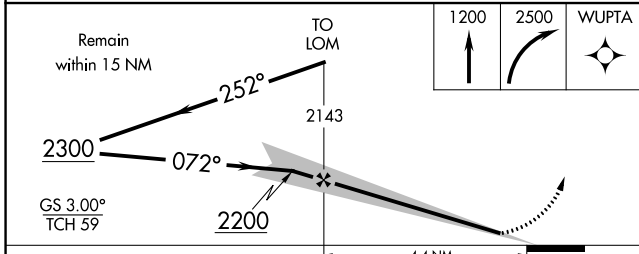
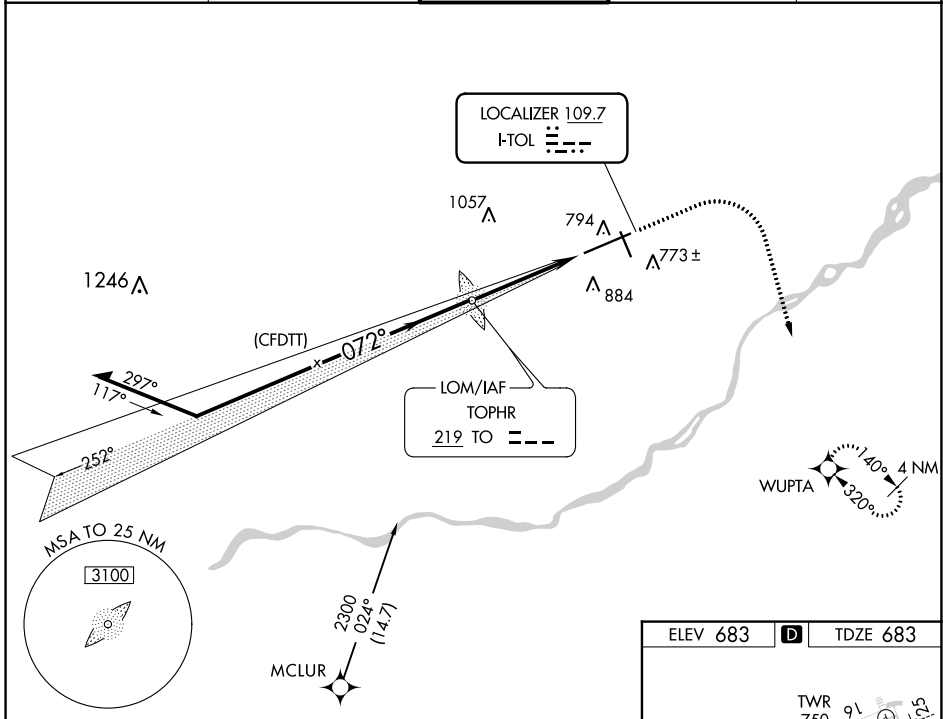


LOC I-TOL 109.7	APP CRS 072°	Rwy Ldg 10599 TDZE 683 Apt Elev 683
---------------------------	------------------------	--

ILS Z or LOC Z RWY 7
EUGENE F KRANZ TOLEDO EXPRESS (TOL)

ADF or RADAR required for procedure entry. RNAV 1-GPS required. ADF required for LOC only.	ALSF-2 	MISSED APPROACH: Climb to 1200 then climbing right turn to 2500 direct WUPTA and hold.
For inop ALS, increase S-ILS 7 Cat E visibility to RVR 4000, S-LOC 7 Cat C/D/E visibility to 1 3/8 SM.		

ATIS 118.75 290.225	TOLEDO APP CON 134.35 317.55	TOLEDO TOWER 118.1 285.4	GND CON 121.9 348.6	CLNC DEL 121.75 348.6
-------------------------------	--	------------------------------------	-------------------------------	---------------------------------



EC-2, 31 OCT 2024 to 28 NOV 2024

EC-2, 31 OCT 2024 to 28 NOV 2024