

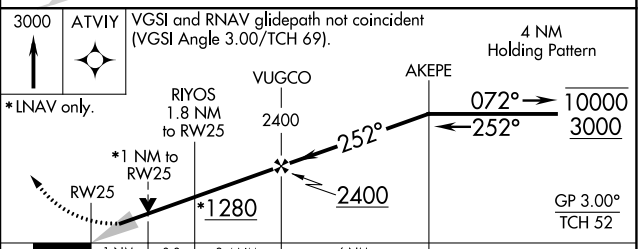
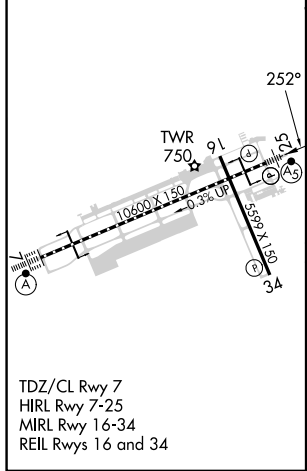
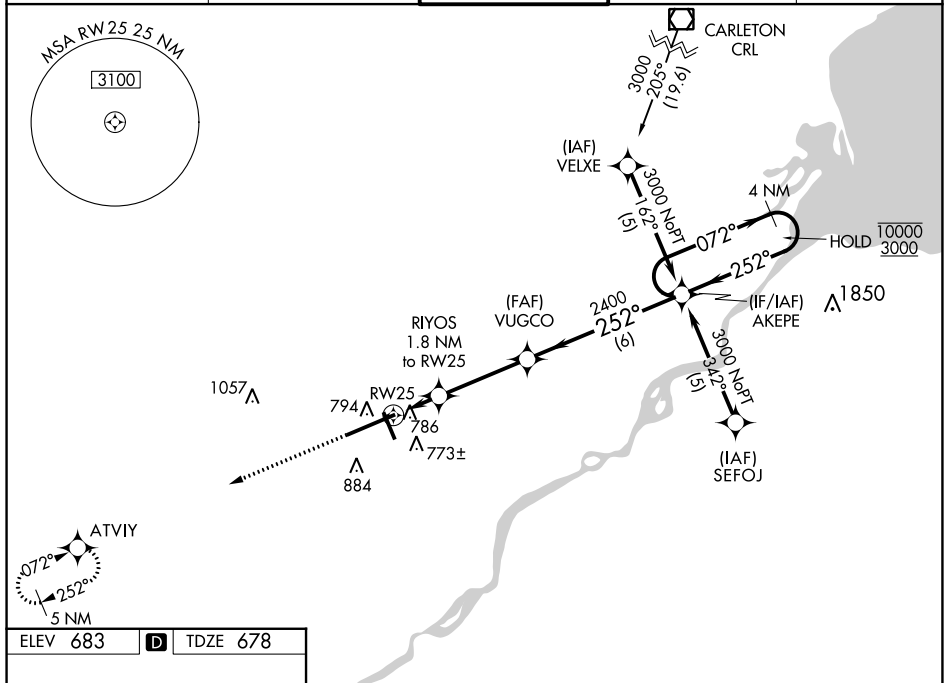
WAAS CH 48899 W25A	APP CRS 252°	Rwy Idg TDZE 678 Apt Elev 683	10599 678 683
--	------------------------	---	--

RNAV (GPS) RWY 25

EUGENE F KRANZ TOLEDO EXPRESS (TOL)

RNP APCH	<p>▼ For uncompensated Baro-VNAV systems, LNAV/VNAV NA below -17°C or above 52°C. For inoperative ALS, increase LPV Cat E visibility to RVR 4000, LNAV/VNAV Cat E visibility to 1½ SM, LNAV Cat D/E visibility to RVR 6000.</p> <p>▲ ASR ** RVR 1800 authorized with the use of FD or AP or HUD to DA.</p>	MALS R	MISSED APPROACH: Climb to 3000 direct ATVIY and hold.
----------	--	--------	--

ATIS 118.75 290.225	TOLEDO APP CON 134.35 317.55	TOLEDO TOWER 118.1 285.4	GND CON 121.9 348.6	CLNC DEL 121.75 348.6
-------------------------------	--	------------------------------------	-------------------------------	---------------------------------



CATEGORY	A	B	C	D	E
LPV DA**	878/24		200 (200-½)		
LNAV/VNAV DA	1065/50		387 (400-1)		
LNAV MDA	1040/24		362 (400-½)		1040/50 362 (400-1)
<input checked="" type="checkbox"/> CIRCLING	1200-1 517 (600-1)		1300-1¾ 617 (700-1¾)	1360-2¼ 677 (700-2¼)	1360-2½ 677 (700-2½)

EC-2, 31 OCT 2024 to 28 NOV 2024

EC-2, 31 OCT 2024 to 28 NOV 2024