

WAAS CH <b>70610</b> <b>W08A</b>	APP CRS <b>082°</b>	Rwy Idg TDZE Apt Elev	<b>5000</b> <b>342</b> <b>347</b>
--	------------------------	-----------------------------	---

# RNAV (GPS) RWY 8

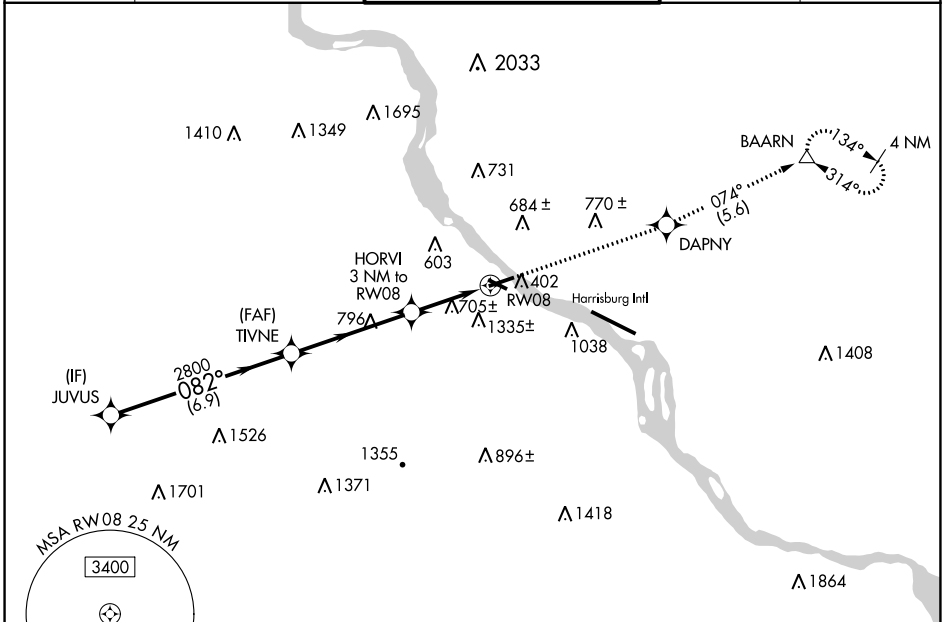
CAPITAL CITY (CXY)

**▽** DME/DME RNP-0.3 NA. When local altimeter setting not received, use Harrisburg Intl altimeter setting. For inop MALSR, increase LPV all Cats visibility to 1½ mile and increase LNAV Cat C, D visibility to 1¾ mile. Helicopter visibility reduction below 1 SM NA. Procedure NA at night.



**MISSED APPROACH:** Climb to 3000 direct DAPNY and on track 074° to BAARN and hold.

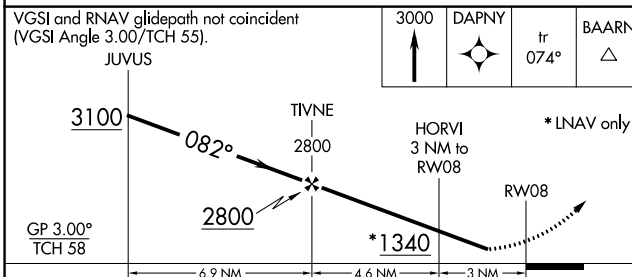
ATIS <b>134.95</b>	HARRISBURG APP CON <b>124.1 273.525</b>	<b>CAPITAL CITY TOWER *</b> <b>119.5 (CTAF) 0 257.8</b>	GND CON <b>121.9</b>	UNICOM <b>122.95</b>
-----------------------	--	--	-------------------------	-------------------------



NE-4, 31 OCT 2024 to 28 NOV 2024

NE-4, 31 OCT 2024 to 28 NOV 2024

## RADAR REQUIRED



CATEGORY	A	B	C	D
LPV DA	833-1¼		491 (500-1¼)	
LNAV MDA	960-1	625 (700-1)	960-1¾	625 (700-1¾)
CIRCLING	1200-1¼ 853 (900-1¼)	1700-1½ 1353 (1400-1½)	1700-3	1353 (1400-3)

