

HI-TACAN RWY 35L

TACAN EFD Chan 31	APCH CRS 002°	Rwy Idg 9001 THRE 28 Arprt Elev 33	AL-197 [USAF]	ELLINGTON (KEFD)
-------------------	---------------	--	---------------	------------------

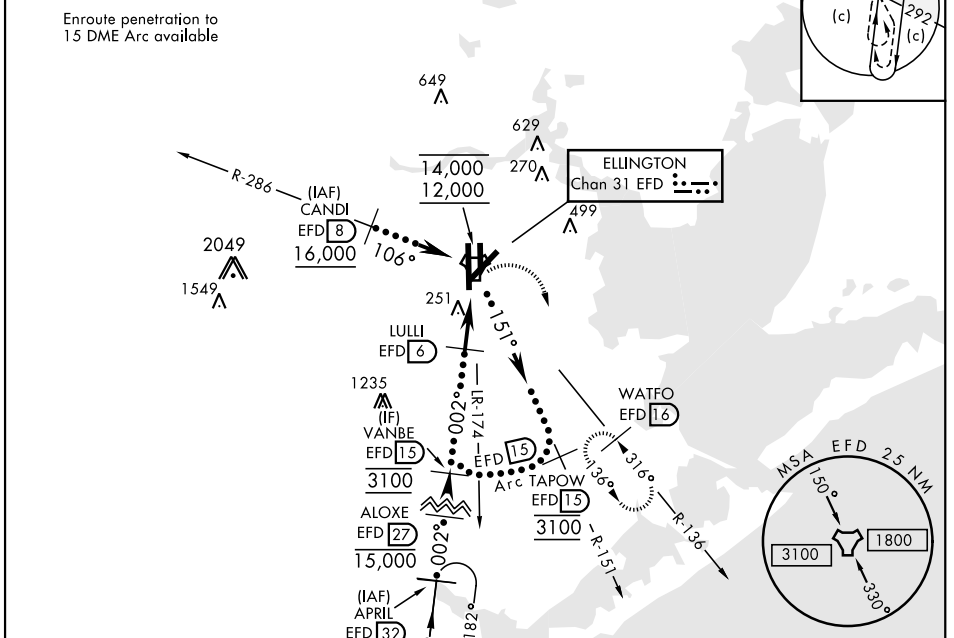
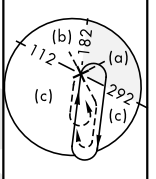
RADAR required for procedure entry

MALSF (A4)

MISSED APPROACH: Climbing right turn to 3100 on EFD TACAN R-136 to WATFO/ EFD 16 DME and hold.

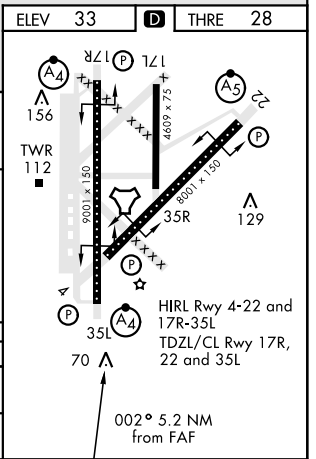
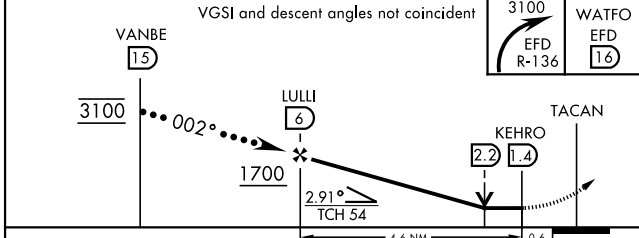
ATIS 135.575 269.9	HOUSTON APP CON 134.45 284.0	TOWER 126.05 253.5	GND CON 121.6 275.8
------------------------------	--	------------------------------	-------------------------------

EFD TACAN	N29°36.36' W95°09.58'
CANDI	N29°39.24' W95°18.17'
APRIL	N29°04.53' W95°14.05'
WATFO	N29°23.90' W94°58.07'



EMERG SAFE ALT 100 NM 16,000

ELEV 33 **D** THRE 28



CATEGORY	C	D	E
S-35L *	520/60	492	(500-1¼)
CIRCLING**	580-1½ 547 (600-1½)	640-2 607 (700-2)	700-2¼ 667 (700-2¼)

002° 5.2 NM from FAF

HOUSTON, TEXAS 29°36'N-95°10'W ELLINGTON (KEFD)

HI-TACAN RWY 35L

SC-5, 31 OCT 2024 to 28 NOV 2024

SC-5, 31 OCT 2024 to 28 NOV 2024