

# HOODO SEVEN DEPARTURE(RNAV)

SC-5, 31 OCT 2024 to 28 NOV 2024

D-ATIS  
124.6  
CLNC DEL  
125.45  
CPDC  
GND CON  
121.9  
HOBBY TOWER  
118.7 256.9  
HOUSTON DEP CON  
127.125 269.075

NOTE: RNAV 1.

NOTE: RADAR required.

NOTE: ATC assigned only.

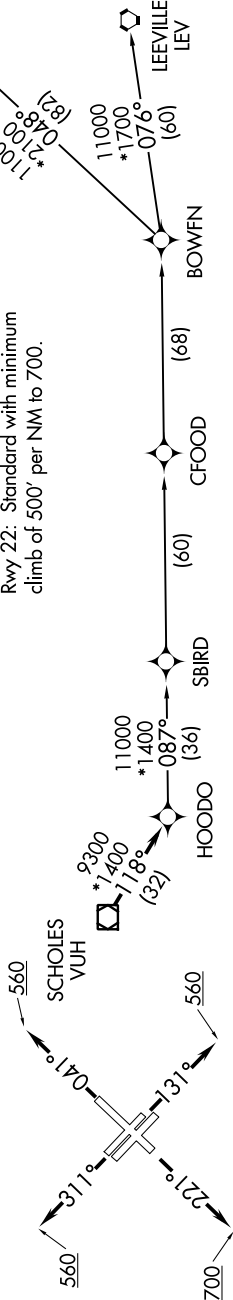
NOTE: DME/DME/IRU or GPS required.

NOTE: For non-GPS equipped aircraft, LCH, ILLA, TBD, and LEV DME's must be operational.

### TAKEOFF MINIMUMS

Rwys 4, 13L/R, 31L/R: Standard with minimum climb of 500' per NM to 560.

Rwy 22: Standard with minimum climb of 500' per NM to 700.



TOP ALTITUDE:  
16000

### DEPARTURE ROUTE DESCRIPTION

**TAKEOFF RUNWAY 4:** Climb on heading 041° to 560, for RADAR vectors to VUH VOR/DME, thence . . . .

**TAKEOFF RUNWAYS 13L/R:** Climb on heading 131° to 560, for RADAR vectors to VUH VOR/DME, thence . . . .

**TAKEOFF RUNWAY 22:** Climb on heading 221° to 700, for RADAR vectors to VUH VOR/DME, thence . . . .

**TAKEOFF RUNWAYS 31L/R:** Climb on heading 311° to 560, for RADAR vectors to VUH VOR/DME, thence . . . .

. . . . on track 118° to HOODO, then on (transition). Maintain 16000.  
Expect filed altitude 10 minutes after departure.

- BOWFN TRANSITION (HOODO7.BOWFN)
- CFOOD TRANSITION (HOODO7.CFOOD)
- HARVEY TRANSITION (HOODO7.HRV)
- LEEVILLE TRANSITION (HOODO7.LEV)
- SBIRD TRANSITION (HOODO7.SBIRD)



NOTE: Chart not to scale.

# HOODO SEVEN DEPARTURE (RNAV)

(HOODO7.HOODO) 07OCT21

SC-5, 31 OCT 2024 to 28 NOV 2024