

LOC/DME I-UPU <b>111.3</b>	APP CRS <b>311°</b>	Rwy Idg TDZE Apt Elev	<b>7602</b> <b>43</b> <b>46</b>
Chan <b>50</b>			

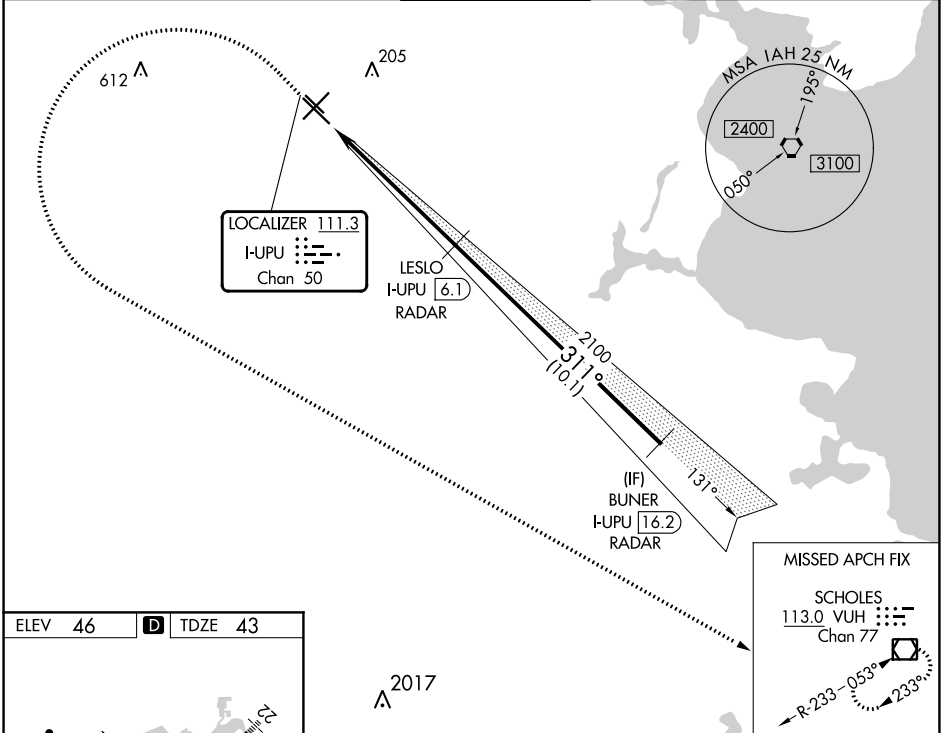
# ILS or LOC RWY 31L

WILLIAM P HOBBY (HOU)

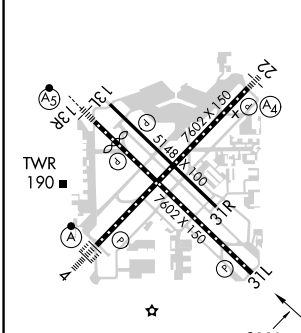
RADAR or DME required for LOC only.  
RADAR required for procedure entry.

MISSED APPROACH: Climb to 1000 then climbing left turn to 3000 direct VUH VOR/DME and hold.

D-ATIS <b>124.6</b>	HOUSTON APP CON <b>120.05 379.1 EAST</b> <b>124.35 316.15 WEST</b>	HOBBY TOWER <b>118.7 256.9</b>	GND CON <b>121.9</b>	CLNC DEL <b>125.45</b>	CPDLC
------------------------	--	-----------------------------------	-------------------------	---------------------------	-------



ELEV 46	<b>D</b>	TDZE 43
---------	----------	---------



REIL Rwy 31L  
MIRL Rwy 13L-31R  
HIRL Rwys 4-22 and 13R-31L  
TDZ/CL Rwys 4, 13R and 31L

FAF to MAP 6.3 NM

Knots	60	90	120	150	180
Min:Sec	6:18	4:12	3:09	2:31	2:06

1000	3000	VUH	VGSI and ILS glidepath not coincident (VGSI Angle 3.00/TCH 76).	BUNER I-UPU 16.2 RADAR
*LOC only	*I-UPU 1.1	LESLO I-UPU 6.1 RADAR	2100	311° 4000
	1.3	5 NM	10.1 NM	GS 3.00° TCH 58
CATEGORY	A	B	C	D
S-ILS 31L		243/40	200 (200-3/4)	
S-LOC 31L	520/55	477 (500-1)	520-1 3/8 477 (500-1 3/8)	
<b>C</b> CIRCLING	520-1	474 (500-1)	740-2 1/4 694 (700-2 1/4)	

SC-5, 31 OCT 2024 to 28 NOV 2024

SC-5, 31 OCT 2024 to 28 NOV 2024