


WAAS CH <b>70310</b> <b>W13A</b>	APP CRS <b>131°</b>	Rwy ldg <b>6568</b> TDZE <b>46</b> Apt Elev <b>46</b>
--	------------------------	---

# RNAV (GPS) RWY 13R

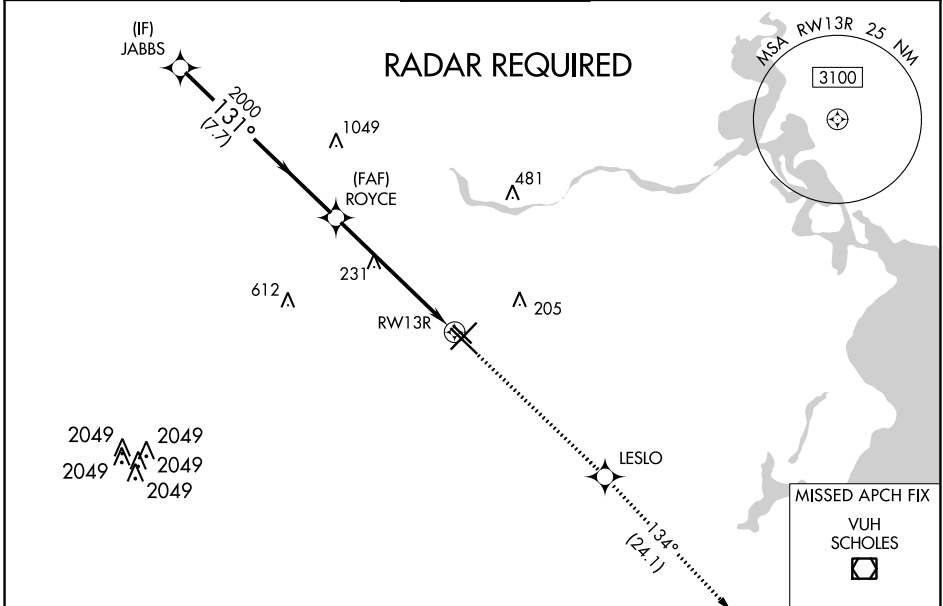
WILLIAM P HOBBY (HOU)



**▽** For uncompensated Baro-VNAV systems, LNAV/VNAV NA below -15°C or above 54°C. DME/DME RNP-0.3 NA. For inop ALS, increase LPV all Cats visibility to RVR 5000; increase LNAV/VNAV Cats A/B/C/D visibility to 1½ SM, Cat E to 1½ SM; and increase LNAV Cats A/B visibility to RVR 5500, Cats C/D to 1½ SM, Cat E to 1¾ SM. Rwy 13R helicopter visibility reduction below ¾ SM NA.

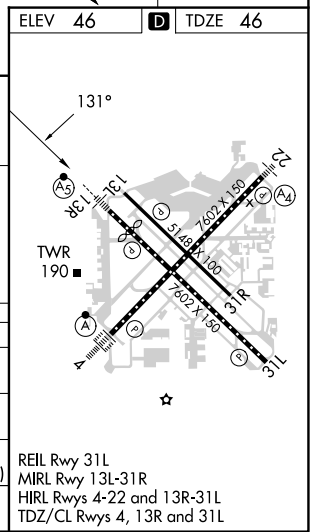
MALSR 

MISSED APPROACH: Climb to 2200 direct LESLO and on track 134° to VUH VOR/DME.

D-ATIS <b>124.6</b>	HOUSTON APP CON <b>120.05 379.1 EAST</b> <b>124.35 316.15 WEST</b>	HOBBY TOWER <b>118.7 256.9</b>	GND CON <b>121.9</b>	CLNC DEL <b>125.45</b>	CPDLC
------------------------	--	-----------------------------------	-------------------------	---------------------------	-------



	ELEV 46		TDZE 46			
	JABBS	ROYCE	2200	LESLO	tr 134°	VUH
	2000	2000	↑	✧	↔	
	*1.4 NM to RW13R		*LNAV only			
	GP 3.00° TCH 49		RW13R			
	7.7 NM		4.5 NM		1.4 NM	
CATEGORY	A	B	C	D	E	
LPV DA	330/40		284 (300-¾)			
LNAV/VNAV DA	475/50		429 (500-1)			
LNAV MDA	540/40	494 (500-¾)	540/50	494 (500-1)	540/60	494 (500-1¼)
 CIRCLING	540-1	494 (500-1)	740-2¼	694 (700-2¼)	860-3	814 (900-3)



SC-5, 31 OCT 2024 to 28 NOV 2024

SC-5, 31 OCT 2024 to 28 NOV 2024