

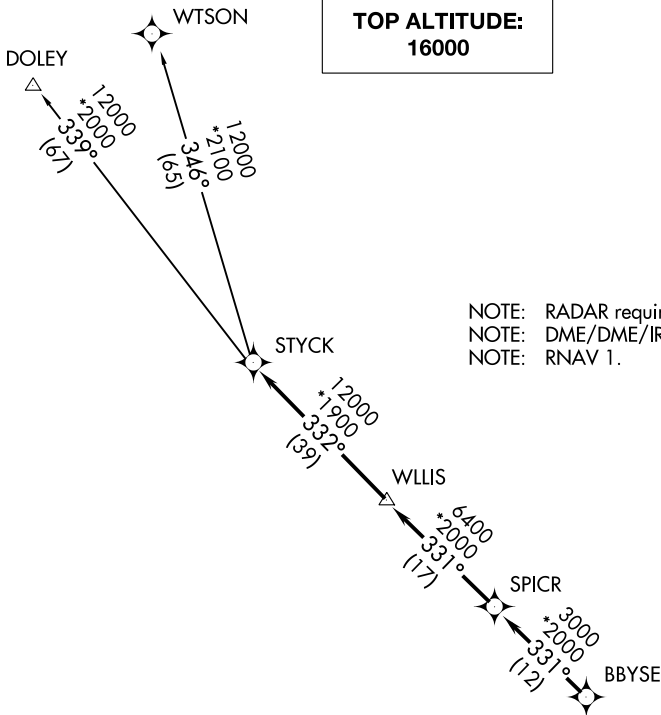
(STYCK8.STYCK) 21280

AL-198 (FAA)

WILLIAM P HOBBY (HOU)
HOUSTON, TEXAS

STYCK EIGHT DEPARTURE (RNAV)

**TOP ALTITUDE:
16000**



D-ATIS
124.6
CLNC DEL
125.45
CPDLC
GND CON
121.9
HOBBY TOWER
118.7 256.9
HOUSTON DEP CON
132.25

NOTE: RADAR required.
 NOTE: DME/DME/IRU or GPS required.
 NOTE: RNAV 1.

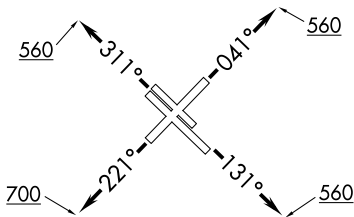
TAKEOFF MINIMUMS

Rwys 4, 13L/R, 31L/R: Standard with minimum climb of 500' per NM to 560.
 Rwy 22: Standard with minimum climb of 500' per NM to 700.

DEPARTURE ROUTE DESCRIPTION

TAKEOFF RUNWAY 4: Climb on heading 041° to 560 for RADAR vectors to BBYSE, thence. . .
TAKEOFF RUNWAYS 13L/R: Climb on heading 131° to 560 for RADAR vectors to BBYSE, thence. . .
TAKEOFF RUNWAY 22: Climb on heading 221° to 700 for RADAR vectors to BBYSE, thence. . .
TAKEOFF RUNWAYS 31L/R: Climb on heading 311° to 560 for RADAR vectors to BBYSE, thence. . .
 . . . on track 331° to SPICR, then on track 331° to WLLIS, then on track 332° to STYCK, then on (transition). Maintain 16000 or as assigned by ATC. Expect filed altitude 10 minutes after departure.

DOLEY TRANSITION (STYCK8.DOLEY)
WTSON TRANSITION (STYCK8.WTSON)



NOTE: Chart not to scale.

STYCK EIGHT DEPARTURE (RNAV)

(STYCK8.STYCK) 07OCT21

HOUSTON, TEXAS
WILLIAM P HOBBY (HOU)

SC-5, 31 OCT 2024 to 28 NOV 2024

SC-5, 31 OCT 2024 to 28 NOV 2024