

(DAWNN1.DAWNN) 23334  
**DAWNN ONE DEPARTURE**

AL-203 (FAA)

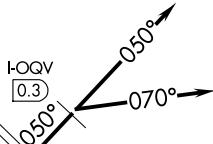
INDIANAPOLIS INTL (IND)  
 INDIANAPOLIS, INDIANA

D-ATIS 134.25  
 CLNC DEL  
 128.75 257.8  
 CPDLC  
 GND CON  
 121.9  
 INDY TOWER  
 120.9 257.8  
 INDIANAPOLIS DEP CON  
 124.95 317.8 (EAST)  
 119.05 317.8 (WEST)

**TOP ALTITUDE:  
 ASSIGNED BY  
 ATC**

BRICKYARD  
 116.3 VHP  
 Chan 110

LOCALIZER  
 111.75 I-UZK  
 Chan 54(Y)



LOCALIZER  
 111.15 I-OQV  
 Chan 48(Y)

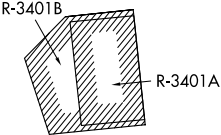
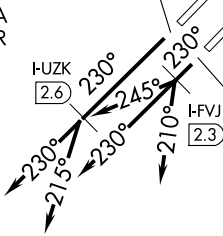
LOCALIZER  
 111.15 I-FVJ  
 Chan 48(Y)

TERRE HAUTE  
 115.3 TTH  
 Chan 100

HOOSIER  
 110.2 OOM  
 Chan 39

SNEVA RADAR

FOYTT RADAR



DAWNN  
 10000  
 (For LOUISVILLE Transition)



LOUISVILLE  
 114.8 IU  
 Chan 95

MYSTIC  
 108.2 MYS

TAKEOFF MINIMUMS:  
 Rwy 5L/R, 14, 23L/R, 32: Standard.

- NOTE: RADAR required.
- NOTE: Select appropriate localizer/DME frequency/channel prior to departure.
- NOTE: Turbojets accelerate to 250K until reaching 10000, if unable advise ATC.
- NOTE: Assigned to aircraft with a requested altitude of 11000 or above.

(NARRATIVE ON FOLLOWING PAGE)

NOTE: Chart not to scale.

**DAWNN ONE DEPARTURE**  
 (DAWNN1.DAWNN) 07DEC17

INDIANAPOLIS, INDIANA  
 INDIANAPOLIS INTL (IND)

EC-2, 31 OCT 2024 to 28 NOV 2024

EC-2, 31 OCT 2024 to 28 NOV 2024



DEPARTURE ROUTE DESCRIPTION

TAKEOFF RWY 23R (TURBOJETS ONLY-DME REQUIRED): Climb on heading 230° to I-UZK 2.6 DME, then on assigned heading 230° or 215° to assigned altitude.

Thence....

TAKEOFF RWY 23L (TURBOJETS ONLY-DME REQUIRED): Climb on heading 230° to I-FVJ 2.3 DME, then on assigned heading 210°, 230°, or 245° to assigned altitude.

Thence....

TAKEOFF RWY 5R (TURBOJETS ONLY-DME REQUIRED): Climb on heading 050° to I-OQV 0.3 DME, then on assigned heading 050° or 070° to assigned altitude.

Thence....

TAKEOFF ALL OTHER RWYS (TURBOJETS ONLY): Climb on assigned heading to assigned altitude. Thence....

TAKEOFF ALL RWYS (PROPELLER ONLY): Climb on assigned heading to assigned altitude. Thence....

DEPARTING ALL OTHER AUTHORIZED RUNWAYS/AIRPORTS: Climb on assigned heading to assigned altitude. Thence....

....on RADAR vectors to join VHP R-174 to DAWNN INT then on transition or assigned route. Expect clearance to requested altitude ten minutes after departure.

LOUISVILLE TRANSITION (DAWNN1.IIU): From over DAWNN INT on IIU R-311 to IIU VORTAC.

MYSTIC TRANSITION (DAWNN1.MYS): From over DAWNN INT on MYS R-002 to MYS VOR.

EC-2, 31 OCT 2024 to 28 NOV 2024

EC-2, 31 OCT 2024 to 28 NOV 2024