

LOC/DME I-FVJ <b>111.15</b> Chan <b>48 (Y)</b>	APP CRS <b>230°</b>	Rwy Idg <b>10000</b> TDZE <b>790</b> Apt Elev <b>796</b>
--	------------------------	--

# ILS RWY 23L (SA CAT II)

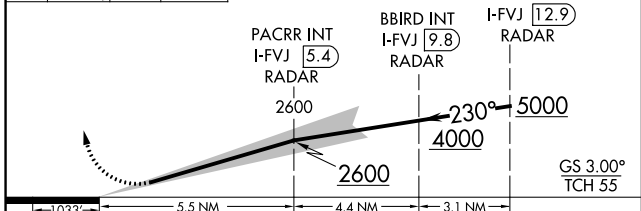
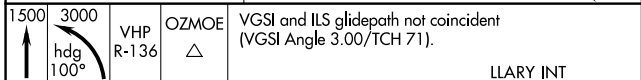
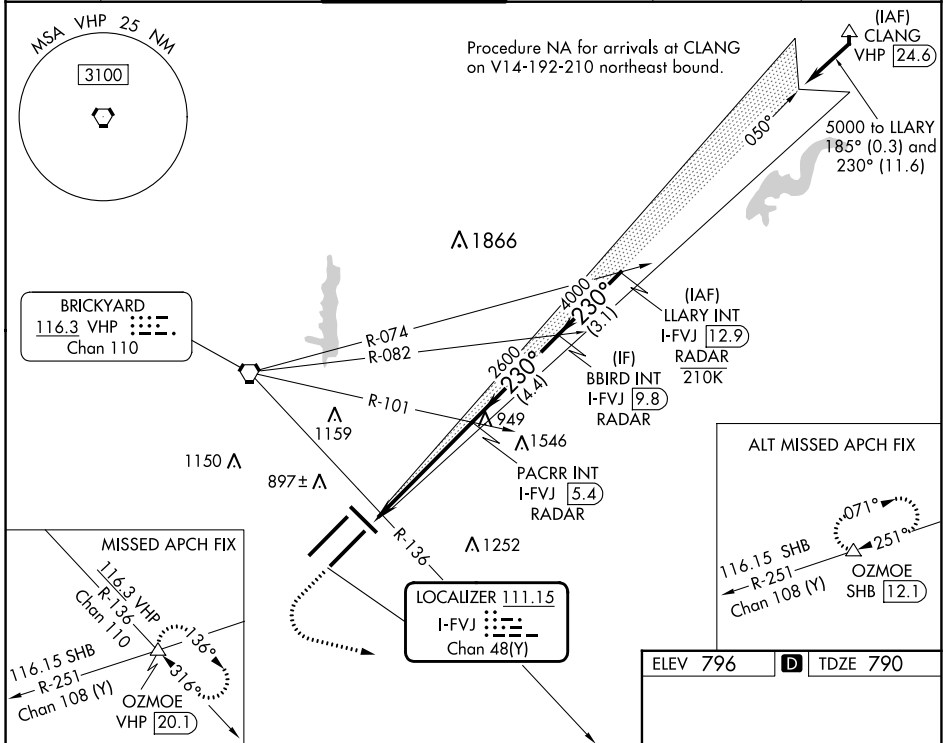
INDIANAPOLIS INTL (IND)

Simultaneous approach authorized. Requires specific OPSPEC, MSPEC, or LOA approval.

MALS R-136

MISSED APPROACH: Climb to 1500 then climbing left turn to 3000 on heading 100° and on VHP VORTAC R-136 to OZMOE INT/VHP 20.1 DME and hold.

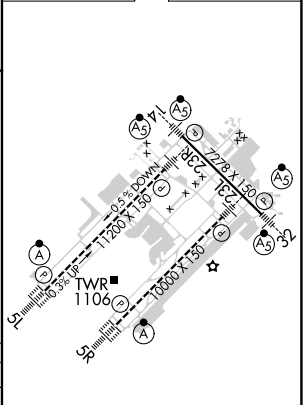
D-ATIS <b>134.25</b>	INDIANAPOLIS APP CON <b>128.175 317.8</b>	INDY TOWER <b>120.9 257.8</b>	GND CON <b>121.9</b>	CLNC DEL <b>128.75 257.8</b>	CPDLC
-------------------------	--	----------------------------------	-------------------------	---------------------------------	-------



CATEGORY	A	B	C	D
S-ILS 23L	RA 105/12		100 DA 890	

**SA CATEGORY II ILS- SPECIAL AIRCREW & AIRCRAFT CERTIFICATION REQUIRED**

ELEV 796 TDZE 790



HIRL all Rwys  
TDZ/CL Rwys 5L and 5R