

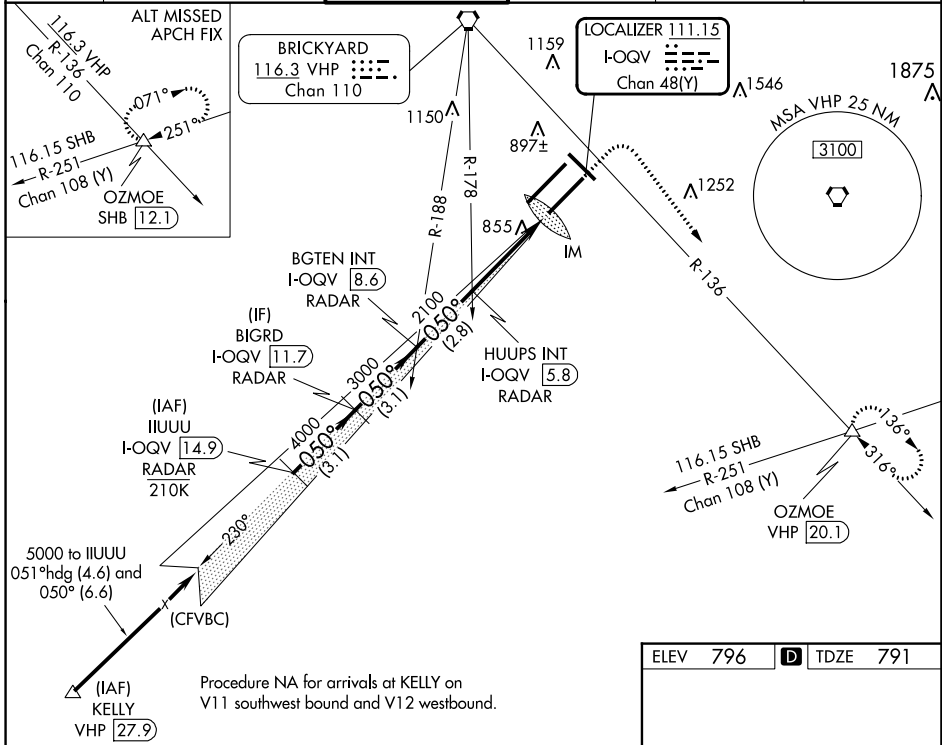
LOC/DME I-QOQV 111.15 Chan 48(Y)	APP CRS 050°	Rwy ldg 10000 TDZE 791 Apt Elev 796
---	------------------------	--

ILS RWY 5R (SA CAT I)

INDIANAPOLIS INTL (IND)

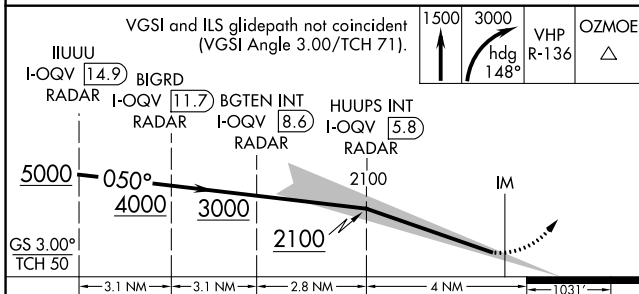
<p>▽ DME or RADAR required. Simultaneous approach authorized. Requires specific OPSPEC, MSPEC, or LOA approval and use of HUD to DH.</p> <p>⚠ MISSED APPROACH: Climb to 1500 then climbing right turn to 3000 on heading 148° and on VHP VORTAC R-136 to OZMOE INT/VHP 20.1 DME and hold.</p>	<p>ALS-F-2</p>
---	----------------

D-ATIS 134.25	INDIANAPOLIS APP CON 128.175 317.8	INDY TOWER 120.9 257.8	GND CON 121.9	CLNC DEL 128.75 257.8	CPDLC
-------------------------	--	----------------------------------	-------------------------	---------------------------------	-------

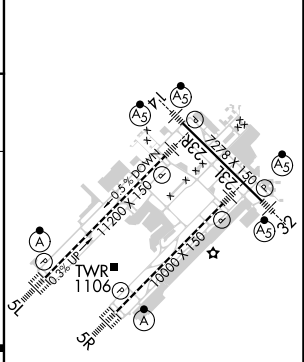


EC-2, 31 OCT 2024 to 28 NOV 2024

EC-2, 31 OCT 2024 to 28 NOV 2024



ELEV 796	D TDZE 791
----------	-------------------



CATEGORY	A	B	C	D
S-ILS 5R	RA 163/14 150 DA 941			

SA CATEGORY I ILS SPECIAL AIRCREW & AIRCRAFT CERTIFICATION REQUIRED

HIRL all Rwys
TDZ/CL Rwys 5L and 5R