

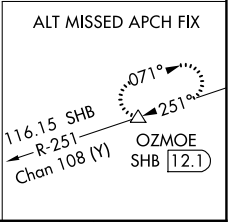
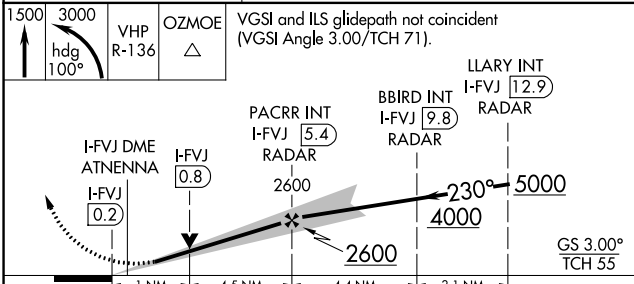
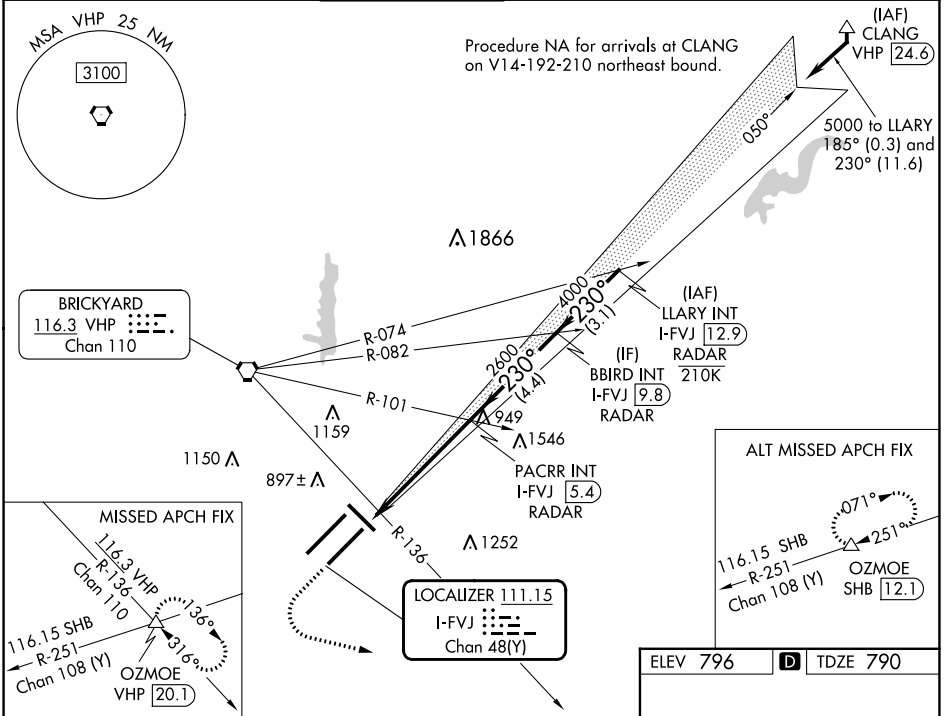
LOC/DME I-FVJ <b>111.15</b> Chan <b>48 (Y)</b>	APP CRS <b>230°</b>	Rwy Idg TDZE <b>790</b> Apt Elev <b>796</b>	<b>10000</b>
--	------------------------	---	--------------

# ILS or LOC RWY 23L INDIANAPOLIS INTL (IND)

Simultaneous approach authorized.  
\* RVR 1800 authorized with use of FD or AP or HUD to DA.

**MAISR** (Icon)  
**MISSED APPROACH:** Climb to 1500 then climbing left turn to 3000 on heading 100° and on VHP VORTAC R-136 to OZMOE INT/VHP 20.1 DME and hold.

D-ATIS <b>134.25</b>	INDIANAPOLIS APP CON <b>128.175 317.8</b>	INDY TOWER <b>120.9 257.8</b>	GND CON <b>121.9</b>	CLNC DEL <b>128.75 257.8</b>	CPDLC
-------------------------	--	----------------------------------	-------------------------	---------------------------------	-------



CATEGORY	A	B	C	D
S-ILS 23L*	990/24		200 (200-½)	
S-LOC 23L	1180/24	390 (400-½)	1180/35	390 (400-¾)
CIRCLING	1420-1	624 (700-1)	1420-1¾ 624 (700-1¾)	1560-2½ 764 (800-2½)

ELEV 796	<b>D</b> TDZE 790
----------	-------------------

230°

2022 x 150

230°

230°

230°

230°

230°

230°

230°

230°

230°

230°

230°

230°

230°

230°

230°

230°

TWR 1106

253° DOWN

11200 X 180

11000 X 180

73000 X 1350

# INDIANAPOLIS INTL (IND) ILS or LOC RWY 23L

EC-2, 31 OCT 2024 to 28 NOV 2024

EC-2, 31 OCT 2024 to 28 NOV 2024