

INDY TWO DEPARTURE

AL-203 (FAA)

INDIANAPOLIS INTL (IND)

INDIANAPOLIS, INDIANA

D-ATIS 134.25
 CLNC DEL
 128.75 257.8
 CPDLC
 GND CON
 121.9
 INDY TOWER
 120.9 257.8
 INDIANAPOLIS DEP CON
 124.95 317.8 (EAST)
 119.05 317.8 (WEST)

RADAR required.

TOP ALTITUDE:
(JETS) 5000
(PROPS) 3000



BOILER
 115.1 BVT
 Chan 98

MARION
 108.6 MZZ
 Chan 23

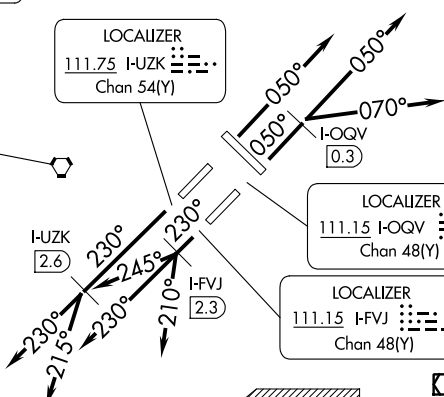
ROSEWOOD
 117.5 ROD
 Chan 122



CHAMPAIGN
 115.75 CMI
 Chan 104(Y)



LOCALIZER
 111.75 I-UZK
 Chan 54(Y)



BRICKYARD
 116.3 VHP
 Chan 110



TERRE HAUTE
 115.3 TTH
 Chan 100



LOCALIZER
 111.15 I-OQV
 Chan 48(Y)

DAYTON
 114.5 DGN
 Chan 92



LOCALIZER
 111.15 I-FVJ
 Chan 48(Y)

R-3401B

R-3401A

SHELBYVILLE
 116.15 SHB
 Chan 108 (Y)

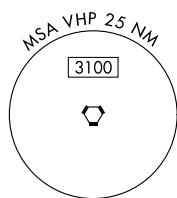


HOOSIER
 110.2 OOM
 Chan 39

R-3403B

R-3403A

POCKET CITY
 113.3 PVX
 Chan 80



TAKEOFF MINIMUMS:

Rwy 5L/R, 14, 23L/R, 32: Standard.

NOTE: Select appropriate localizer/DME frequency/channel prior to departure.
 NOTE: Jet aircraft accelerate to 250K until reaching 10000. If unable advise ATC.

(CONTINUED ON FOLLOWING PAGE)

NOTE: Chart not to scale.

EC-2, 31 OCT 2024 to 28 NOV 2024

EC-2, 31 OCT 2024 to 28 NOV 2024

INDY TWO DEPARTURE

(INDY2.VHP) 16MAY24

INDIANAPOLIS, INDIANA

INDIANAPOLIS INTL (IND)



DEPARTURE ROUTE DESCRIPTION

TAKEOFF RUNWAY 5R (JETS ONLY-DME REQUIRED): Climb on heading 050° to I-OQV 0.3 DME, then on assigned heading 050° or 070°. Maintain 5000.

Thence

TAKEOFF RUNWAY 5L (JETS ONLY): Climb on heading 050°. Maintain 5000.

Thence

TAKEOFF RUNWAY 23R (JETS ONLY-DME REQUIRED): Climb on heading 230° to I-UZK 2.6 DME, then on assigned heading 230° or 215°. Maintain 5000.

Thence....

TAKEOFF RUNWAY 23L (JETS ONLY-DME REQUIRED): Climb on heading 230° to I-FVJ 2.3 DME, then on assigned heading 210°, 230°, or 245°. Maintain 5000.

Thence....

TAKEOFF ALL OTHER RUNWAYS (JETS ONLY): Climb on assigned heading.

Maintain 5000. Thence....

TAKEOFF ALL RUNWAYS (PROPS ONLY): Climb on assigned heading.

Maintain 3000. Thence....

....RADAR vectors to assigned route/fix. Expect clearance to filed altitude 10 minutes after departure.

EC-2, 31 OCT 2024 to 28 NOV 2024

EC-2, 31 OCT 2024 to 28 NOV 2024