

(MAREO5.MAREO) 23334  
**MAREO FIVE DEPARTURE**

AL-203 (FAA)

INDIANAPOLIS INTL (IND)  
 INDIANAPOLIS, INDIANA

D-ATIS  
 134.25  
 CLNC DEL  
 128.75 257.8  
 CPDLC  
 GND CON  
 121.9  
 INDY TOWER  
 120.9 257.8  
 INDIANAPOLIS DEP CON  
 124.95 317.8 (EAST)  
 119.05 317.8 (WEST)

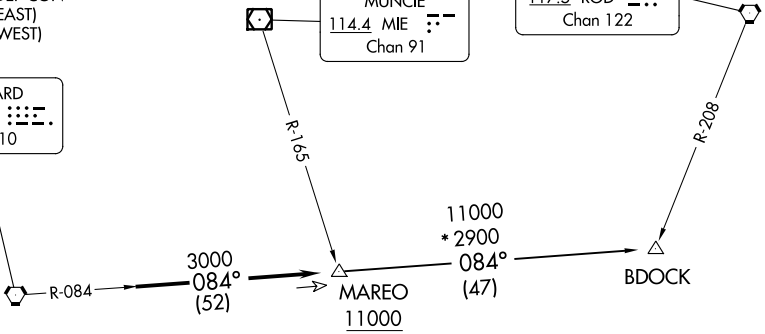
**TAKEOFF MINIMUMS**  
 Rwy 5L/R, 14, 23L/R, 32: Standard.

**TOP ALTITUDE:**  
**(JETS) 5000**  
**(PROPS) 3000**

BRICKYARD  
 116.3 VHP  
 Chan 110

MUNCIE  
 114.4 MIE  
 Chan 91

ROSEWOOD  
 117.5 ROD  
 Chan 122

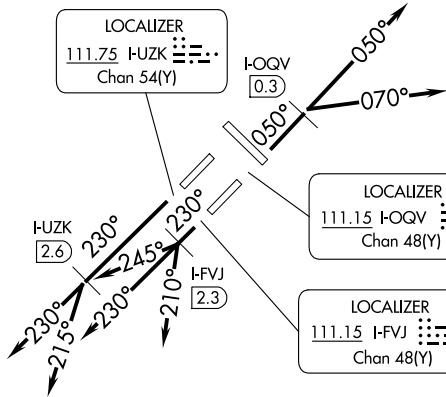


LOCALIZER  
 111.75 HUZK  
 Chan 54(Y)

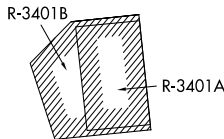
I-OQV  
 0.3

LOCALIZER  
 111.15 I-OQV  
 Chan 48(Y)

LOCALIZER  
 111.15 I-FVJ  
 Chan 48(Y)



- NOTE: RADAR required.
- NOTE: Select appropriate localizer/DME frequency/channel prior to departure.
- NOTE: Turbojets accelerate to 250K until reaching 10000, if unable advise ATC.
- NOTE: Assigned to aircraft with a requested altitude of 11000 or above.



(NARRATIVE ON FOLLOWING PAGE)

NOTE: Chart not to scale.

EC-2, 31 OCT 2024 to 28 NOV 2024

EC-2, 31 OCT 2024 to 28 NOV 2024



DEPARTURE ROUTE DESCRIPTION

TAKEOFF RWY 5R (TURBOJETS ONLY-DME REQUIRED): Climb on heading 050° to I-OQV 0.3 DME, then on assigned heading 050° or 070°. Maintain 5000.

Thence . . . .

TAKEOFF RWY 23R (TURBOJETS ONLY-DME REQUIRED): Climb on heading 230° to I-UZK 2.6 DME, then on assigned heading 230° or 215°. Maintain 5000.

Thence . . . .

TAKEOFF RWY 23L (TURBOJETS ONLY-DME REQUIRED): Climb on heading 230° to I-FVJ 2.3 DME, then on assigned heading 210°, 230°, or 245°. Maintain 5000.

Thence . . . .

TAKEOFF ALL OTHER RWYS (TURBOJETS ONLY): Climb on assigned heading. Maintain 5000. Thence . . . .

TAKEOFF ALL RWYS (PROPELLER ONLY): Climb on assigned heading. Maintain 3000. Thence . . . .

DEPARTING ALL OTHER AUTHORIZED RUNWAYS: Climb on assigned heading to assigned altitude. Thence . . . .

. . . . expect RADAR vectors to join VHP R-084 to MAREO INT then via transition or assigned route. Expect clearance to requested altitude ten minutes after departure.

BDOCK TRANSITION (MAREO5.BDOCK): From over MAREO INT via VHP R-084 to BDOCK INT.

EC-2, 31 OCT 2024 to 28 NOV 2024

EC-2, 31 OCT 2024 to 28 NOV 2024