

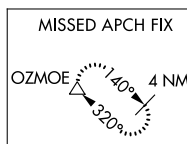
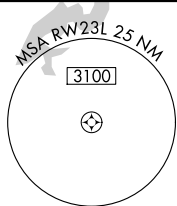
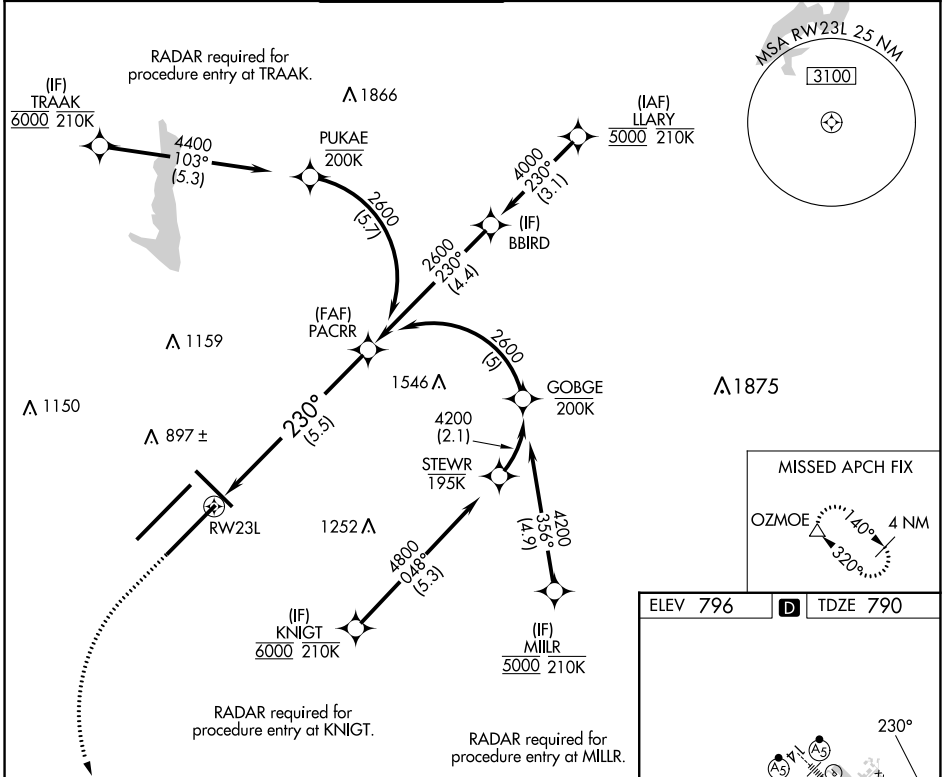
APP CRS	Rwy Idg	<b>10000</b>
<b>230°</b>	TDZE	<b>790</b>
	Apt Elev	<b>796</b>

# RNAV (RNP) Z RWY 23L

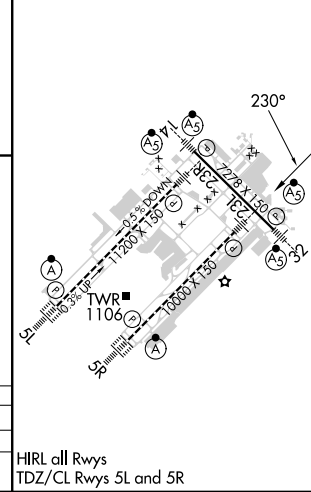
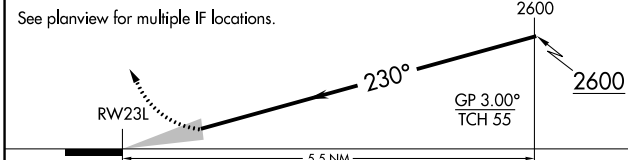
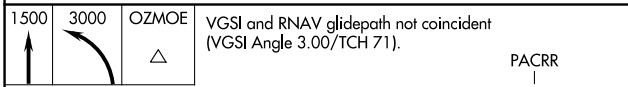
INDIANAPOLIS INTL (IND)

RNP AR APCH - GPS.		MALS R	MISSED APPROACH: Climb to 1500, then climbing left turn to 3000 direct OZMOE and hold.
<p>▼ For uncompensated Baro-VNAV systems, procedure NA below -20°C or above 54°C. Simultaneous approach authorized for arrivals from LLRY only.</p>			

D-ATIS <b>134.25</b>	INDIANAPOLIS APP CON <b>128.175 317.8</b>	INDY TOWER <b>120.9 257.8</b>	GND CON <b>121.9</b>	CLNC DEL <b>128.75 257.8</b>	CPDLC
-------------------------	--	----------------------------------	-------------------------	---------------------------------	-------



ELEV 796	<b>D</b> TDZE 790
----------	-------------------



CATEGORY	A	B	C	D
RNP 0.30 DA	1175/35		385 (400-%)	

## AUTHORIZATION REQUIRED

HIRL all Rwys  
TDZ/CL Rwys 5L and 5R

EC-2, 31 OCT 2024 to 28 NOV 2024

EC-2, 31 OCT 2024 to 28 NOV 2024