

RNAV (RNP) Z RWY 23R

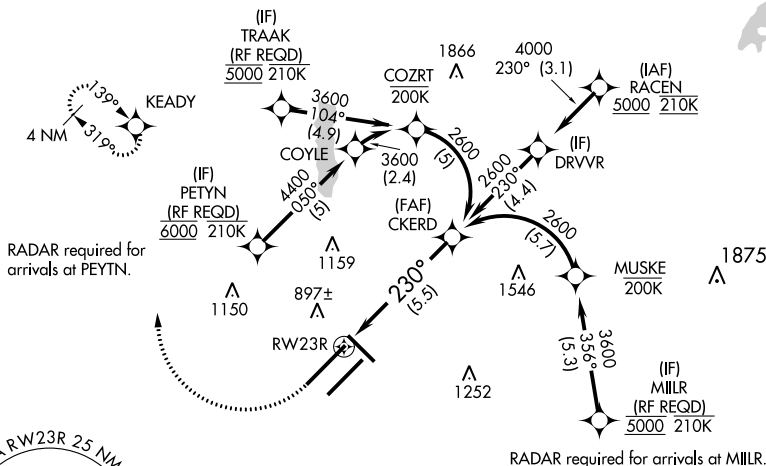
INDIANAPOLIS INTL (IND)

APP CRS 230°	Rwy Idg 11200
	TDZE 783
	Apt Elev 796

<p>▽ For uncompensated Baro-VNAV systems, procedure NA below -18°C (0°F) or above 54°C (130°F). GPS Required. For inoperative ALS, increase RNP 0.15 all Cats visibility to RVR 6000 and increase RNP 0.30 all Cats visibility to 1 3/8 SM. Simultaneous approach authorized.</p>	<p>MALSR</p>	<p>MISSED APPROACH: Climb to 1200 then climbing right turn to 3000 direct KEADY and hold.</p>

D-ATIS 134,25	INDIANAPOLIS APP CON 128.175 317.8	INDY TOWER 120.9 257.8	GND CON 121.9	CLNC DEL 128.75 257.8	CPDLC
-------------------------	--	----------------------------------	-------------------------	---------------------------------	-------

RADAR required for arrivals at TRAAK.



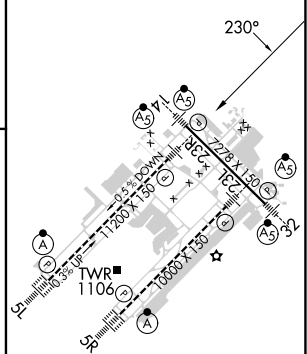
EC-2, 31 OCT 2024 to 28 NOV 2024

EC-2, 31 OCT 2024 to 28 NOV 2024



1200	3000	KEADY	See planview for multiple IF locations.
<p>VGSI and RNAV glidepath not coincident (VGSI Angle 3.00/TCH 71).</p>			
<p>RW23R</p>			
<p>CKERD 2600</p>			
<p>GP 3.00° TCH 55</p>			

ELEV 796	D TDZE 783
----------	-------------------



CATEGORY	A	B	C	D
RNP 0.15 DA		1147/40	364 (400-3/4)	
RNP 0.30 DA		1206/50	423 (500-1)	

AUTHORIZATION REQUIRED

HIRL all Rwys
TDZ/CL Rws 5L and 5R