

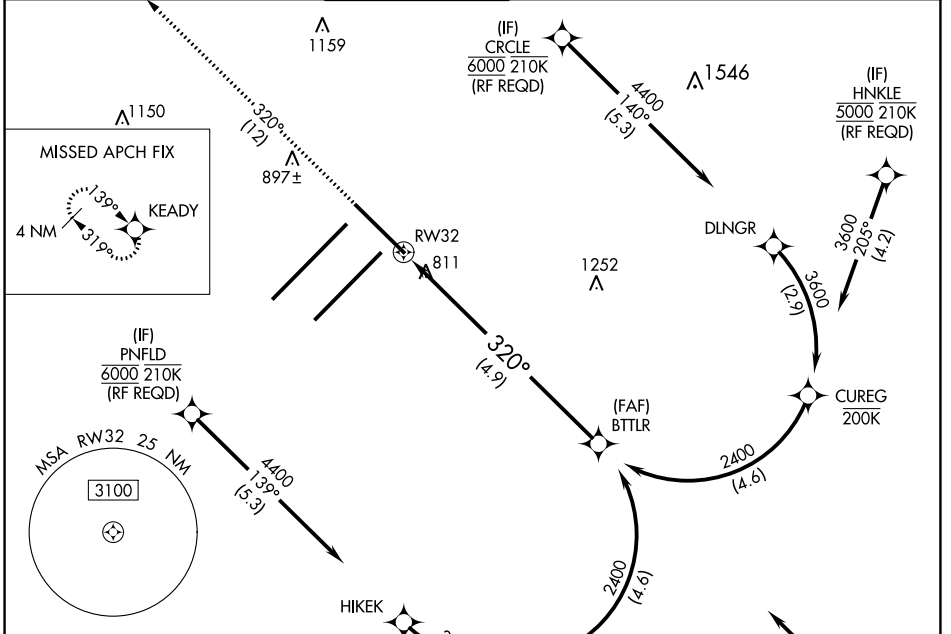
APP CRS 320°	Rwy Idg 7278
	TDZE 793
	Apt Elev 796

RNAV (RNP) Z RWY 32

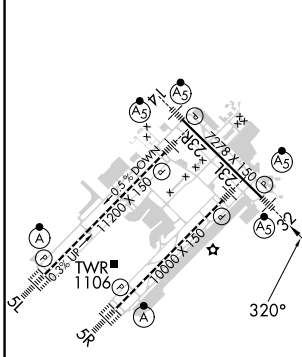
INDIANAPOLIS INTL (IND)

	For uncompensated Baro-VNAV systems, procedure NA below -18°C (2°F) or above 54°C (130°F). GPS required.	MALSR 	MISSED APPROACH: Climb to 3000 on track 320° to KEADY and hold.

D-ATIS 134.25	INDIANAPOLIS APP CON 128.175 317.8	INDY TOWER 120.9 257.8	GND CON 121.9	CLNC DEL 128.75 257.8	CPDLC
-------------------------	--	----------------------------------	-------------------------	---------------------------------	-------



ELEV 796	D	TDZE 793
----------	----------	----------



3000 ↑ Ir 320°	KEADY	VGSI and RNAV glidepath not coincident (VGSI Angle 3.00/TCH 73).	BTTLR 2400
See planview for multiple IF locations.			GP 3.00° TCH 53

4.9 NM			
CATEGORY	A	B	C
RNP 0.19 DA		1134/30	341 (400- ² / ₃)
RNP 0.30 DA		1196/45	403 (400- ² / ₃)

HIRL all Rwys
TDZ/CL Rwys 5L and 5R

INDIANAPOLIS, INDIANA
Amdt 2 10NOV16

39°43'N-86°18'W

INDIANAPOLIS INTL (IND) RNAV (RNP) Z RWY 32

AUTHORIZATION REQUIRED

EC-2, 31 OCT 2024 to 28 NOV 2024

EC-2, 31 OCT 2024 to 28 NOV 2024