

APP CRS	Rwy Idg	<b>10000</b>
<b>050°</b>	TDZE	<b>791</b>
	Apt Elev	<b>796</b>

# RNAV (RNP) Z RWY 5R

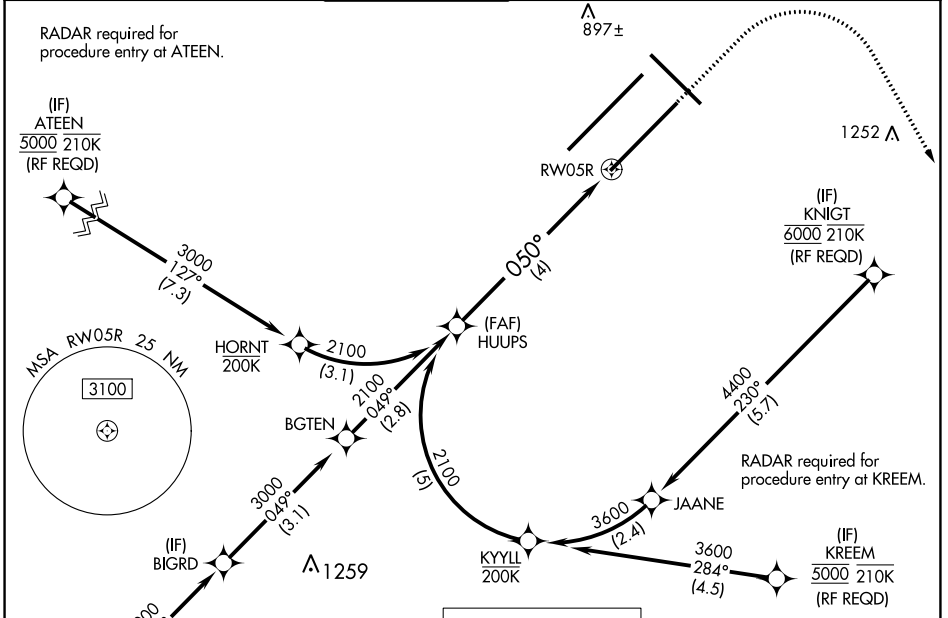
INDIANAPOLIS INTL (IND)

**▽** For uncompensated Baro-VNAV systems, procedure NA below -18°C (0°F) or above 54°C (130°F). GPS required. Simultaneous approach authorized, for arrivals from IUUU only.

ALSF-2

**MISSED APPROACH:**  
Climb to 1500, then climbing right turn to 3000 direct OZMOE and hold.

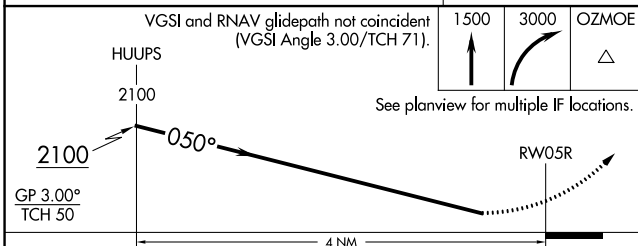
D-ATIS <b>134.25</b>	INDIANAPOLIS APP CON <b>128.175 317.8</b>	INDY TOWER <b>120.9 257.8</b>	GND CON <b>121.9</b>	CLNC DEL <b>128.75 257.8</b>	CPDLC
-------------------------	--	----------------------------------	-------------------------	---------------------------------	-------



EC-2, 31 OCT 2024 to 28 NOV 2024

EC-2, 31 OCT 2024 to 28 NOV 2024

ELEV 796	<b>D</b>	TDZE 791
----------	----------	----------



CATEGORY	A	B	C	D
RNP 0.11 DA		1174/45	383 (400-7/8)	
RNP 0.30 DA		1271/60	480 (500-1¼)	

## AUTHORIZATION REQUIRED

