

WAAS CH <b>63031</b> <b>W14A</b>	APP CRS <b>141°</b>	Rwy Idg <b>4008</b> TDZE <b>41</b> Apt Elev <b>41</b>
--	------------------------	---

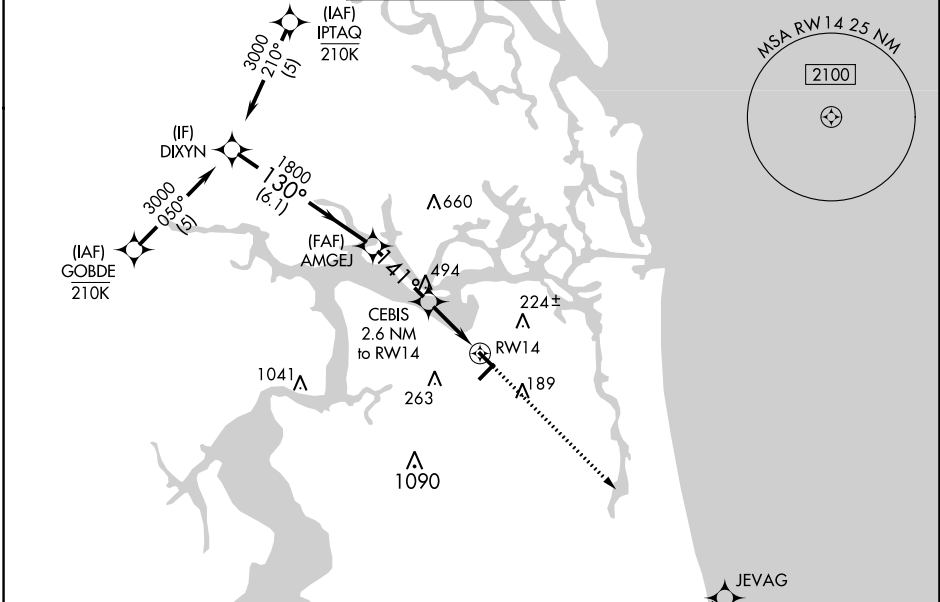
# RNAV (GPS) RWY 14

JACKSONVILLE EXEC AT CRAIG (CRG)

**Procedure NA at night. Baro-VNAV NA when using Jacksonville Intl altimeter setting. For uncompensated Baro-VNAV systems, LNAV/VNAV NA below -3°C (27°F) or above 54°C (130°F). DME/DME RNP-0.3 NA. Helicopter visibility reduction below 1 SM NA. When local altimeter setting not received, use Jacksonville Intl altimeter setting; increase LPV DA to 325 feet; increase LNAV/VNAV DA to 450 feet and all visibilities ½ SM; increase all MDAs 40 feet and Circling visibility Cat C ¼ SM.**

**MISSED APPROACH:** Climb to 1900 direct JEVAG and hold.

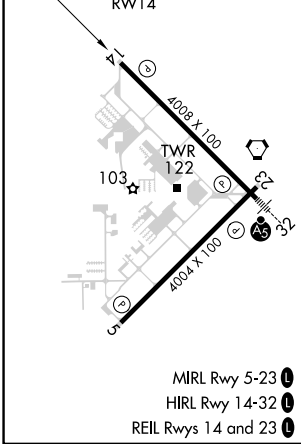
ATIS <b>125.4</b>	JACKSONVILLE APP CON <b>124.9 308.4</b>	CRAIG TOWER ★ <b>132.1</b> (CTAF) <b>269.525</b>	GND CON <b>121.8</b>	CLNC DEL <b>118.35</b>	UNICOM <b>122.95</b>
----------------------	--	---	-------------------------	---------------------------	-------------------------



SE-3, 31 OCT 2024 to 28 NOV 2024

SE-3, 31 OCT 2024 to 28 NOV 2024

ELEV	41	TDZE	41
------	----	------	----



### RADAR REQUIRED

GP 3.00° TCH 44	3000	130°	1800	141°	*900	1900	JEVAG
	6.1 NM		2.8 NM		2.6 NM		
CATEGORY	A	B	C	D			
LPV DA		293-1	252 (300-1)				
LNAV/VNAV DA		418-1¼	377 (400-1¼)				
LNAV MDA	500-1	459 (500-1)	500-1⅓	459 (500-1⅓)			
CIRCLING	500-1 459 (500-1)	600-1 559 (600-1)	620-1½ 579 (600-1½)	800-2½ 759 (800-2½)			