

LOC/DME I-OXH <b>110.75</b> Chan <b>44</b> (Y)	APP CRS <b>231°</b>	Rwy Idg TDZE Apt Elev	<b>8600</b> <b>965</b> <b>986</b>
--	------------------------	-----------------------------	---

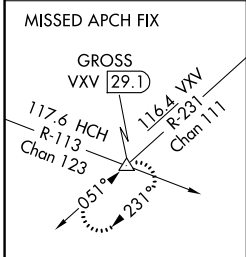
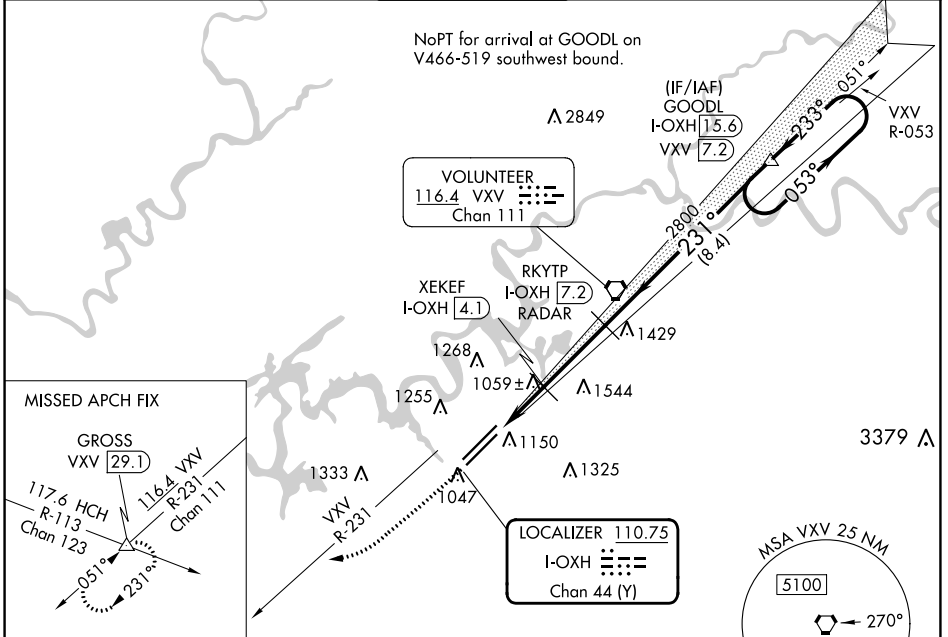
# ILS or LOC RWY 23L

MC GHEE TYSON (T'YS)

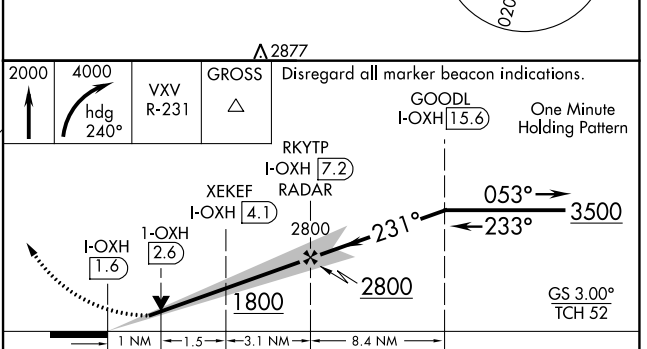
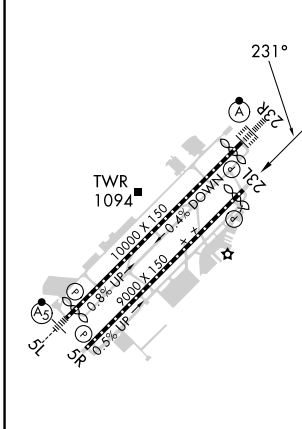
DME or RADAR required.

MISSED APPROACH: Climb to 2000 then climbing right turn to 4000 on heading 240° and VXV VORTAC R-231 to GROSS INT/VXV 29.1 DME and hold.

ATIS <b>128.35</b>	KNOXVILLE APP CON <b>123.9 360.8</b>	KNOXVILLE TOWER <b>121.2 257.8</b>	GND CON <b>121.9 348.6</b>	CLNC DEL <b>121.65</b>
-----------------------	---	---------------------------------------	-------------------------------	---------------------------



ELEV <b>986</b>	<b>D</b>	TDZE <b>965</b>
-----------------	----------	-----------------



CATEGORY	A	B	C	D
S-ILS 23L		1165/40	200 (200-3/4)	
S-LOC 23L		1320/55	355 (400-1)	
<b>C</b> CIRCLING	1500-1 514 (600-1)	1620-1 634 (700-1)	1660-2 674 (700-2)	1900-3 914 (1000-3)

HIRL Rws 5L-23R and 5R-23L  
REIL Rws 5R and 23L  
TDZ/CL Rws 5R and 23R

SE-1, 31 OCT 2024 to 28 NOV 2024

SE-1, 31 OCT 2024 to 28 NOV 2024