

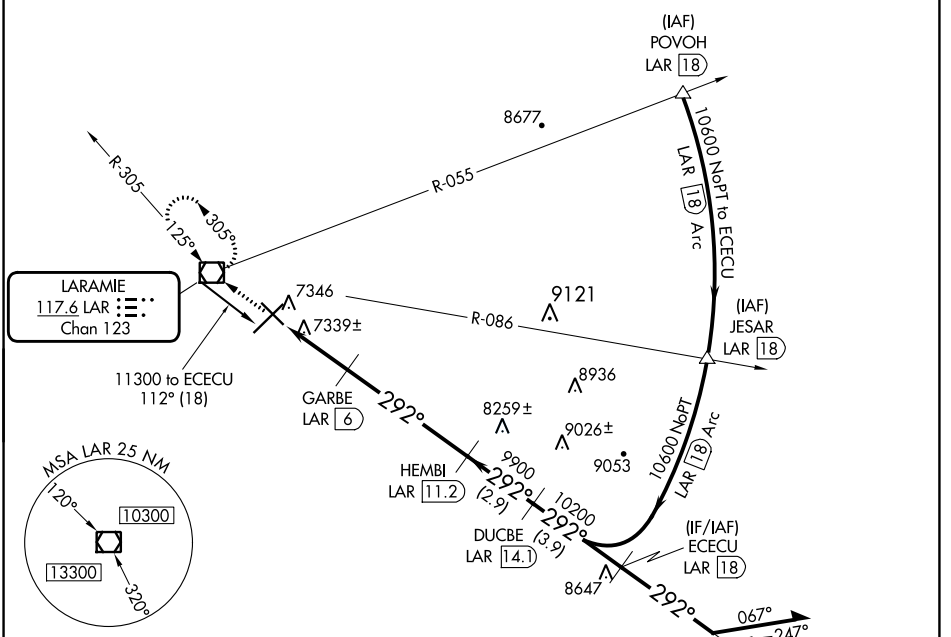
VOR/DME LAR 117.6 Chan 123	APP CRS 292°	Rwy Idg TDZE 6301 7278 Apt Elev 7284
---	------------------------	---

VOR/DME RWY 30

LARAMIE RGNL (L.A.R.)

	ODALS	MISSED APPROACH: Climb to 9600 direct LAR VOR/DME and hold, continue climb-in-hold to 9600.

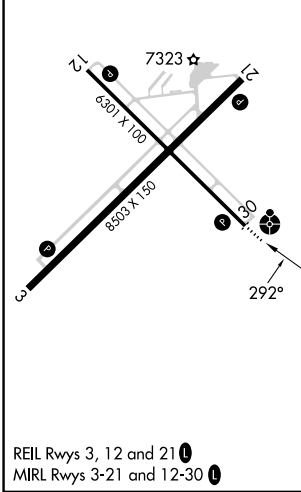
ASOS 135.475	DENVER CENTER 125.9 284.7	UNICOM 123.05 (CTAF)
------------------------	-------------------------------------	--------------------------------



NW-1, 31 OCT 2024 to 28 NOV 2024

NW-1, 31 OCT 2024 to 28 NOV 2024

ELEV 7284	D	TDZE 7278
-----------	---	-----------



9600	LAR	ECECU LAR 18	Remain within 10 NM
LAR 3.1	LAR 4	GARBE LAR 6	HEMBI LAR 11.2
8220	9900	10200	10600
0.9	2 NM	5.2 NM	2.9 NM
3.9 NM			
CATEGORY	A	B	C
S-30	7600-3/4	322 (400-3/4)	7600-1
CIRCLING	7660-1 376 (400-1)	7760-1 476 (500-1)	7880-1 1/2 596 (600-1 1/2)
			7920-2 636 (700-2)